

tenews.co.uk

Temple Ewell Newsletter



Temple Ewell Organisations

Parish Council Chairman	Mr Glenn Mousley	824121
Clerk to the Parish Council	Mr Andrew Howard-Grigg	361774
Police Community Support Officer	Megan Keehner	07929 049947
District Councillor	Mark Rose	07733 080861
County Councillor	Geoffrey Lymer	07960 490929
T E School Head Teacher	Mrs A Matthews	822665
Friends of TE School (Sally Parker)	friendsoftheschool@hotmail.com	
Sunday Club	Mrs J Miles	824280
Friday Club	Yvonne Sacker	330017
Art Workshop	Antionette Tourret	826292
Brownies	Mrs A Newington	827138
Community Coffee Mornings	Mrs J Miles	07375863405
WI	Jan Luckhurst	331051
Produce Association	Trevor Barlow	824787
Temple Ewell Players	Mr M Brodie	07766 228728
Men's Club	Mr A Ladbrook	824948
Village Hall Bookings/Enquiries	John Holness	448140
Youth Club	Marilyn Holness	448140
Branching Out	Marilyn	448140
	Trish	820966
Kent Wildlife Trust Conservation Tasks	Bob Newington	827138
Short Mat Bowls Club	Audrey West	823511
Allotment Manager	Dominic Castle	07836 388458
Kearsney Bowls Club	Roger Cook	07986 576750

St. Peter and St. Paul Temple Ewell

Priest-in-charge: Revd. Ian Parrish 01304 279673 revd.irp@gmail.com

Church Warden - Mrs E Waller 824709 Dr Judith Shilling, 827692

PCC Secretary - Vacancy

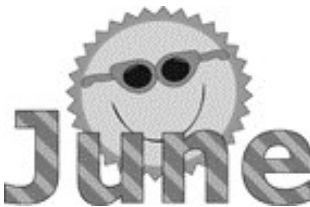
PCC Treasurer - Chris Tyler 07715 078882

Baptist Church

Rev Ewart Graham on 375823 or John Woodland on 822982

Hello All

As I write this we are all hoping that the 'Road out of Lockdown' doesn't get scuppered by the 'Indian Variant'. Having started to get back to some sort of normal it would be such a shame if we have to go backwards. I hope this possibility will spur some of the non-believers into getting vaccinated for the benefit of us all.



We've had a lovely lot of entries for our Pet Photos Competition, my thanks to everyone who has sent one or more photos in. We still need lots more though and the majority are dogs, which are lovely, but we need different species as well. Where are all the cats, hamsters, budgies, rabbits, rats, tarantulas (!) etc?

The closing date is 30th August, but the next issue will be the last one that we can include the photos in as we don't have an August issue. So get snapping!! See page 20 for details and instructions.

www.tenews.co.uk

Editor: Jeanette Potts

Email: templeewellnews@gmail.com Tel: 01304 826386

Address: 13 Chilton Way River CT17 0QB

We welcome all contributions to the content of the Newsletter, but please remember that the deadline date for the next issue is 8pm on the 15th of the preceding month. However, please note, there is no August or January issue of the Newsletter.

NOTE: You should be aware that articles are also published on the website www.tenews.co.uk - please inform us if you want any part of your article withheld from that particular medium.

A copy of every Newsletter is posted on the website, including the village diary. Make sure you log on to www.tenews.co.uk

Temple Ewell Newsletter Editorial Committee

Editor / Web	Jeanette Potts	826386
Chair / Distribution	Jenny Miles	07375863405
Vice Chair	Jenny Olpin	825011
Treasurer	Lisa Scrivens Waghorn	07412 595349
Secretary	Ruth Horton	268998
Events	Barbara Sheridan	827493
Member	Cindy Tuson	823325



Village Diary

Provisional dates - please check before attending

June

Thurs 10 W.I. Meeting 7pm in the Village Hall

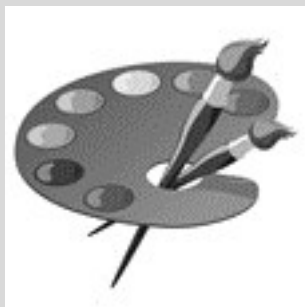
July

Thurs 8 W.I. Meeting 7pm in the Village Hall

August

September

23—25 Players' Production —The Vicar of Dibley



RIVER ART GROUP

OPEN NOW

We currently have **vacancies** in our Class
that meets on

Tuesday mornings 9.30-11.30am term times

Currently in Crabble Corn Mill (cost is £50 per term)

Our teacher is well known local artist, Penny Bearman

Call Jeanette on 01304 826386 for more info

COME AND JOIN US

Electric Vehicle Charge Point Scheme

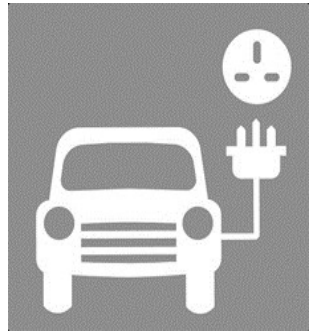
KCC allocated at least £60,00 for the year 2020/21 to install Charge-points for electric vehicles in Parish and Town Council locations. Temple Ewell was one of the areas that was eligible to register an interest.

The project is aimed at Parish and Town Councils who have ownership or use of village/town halls and community buildings, however the scheme is open to explore all available opportunities if another piece of land or building can be found.

A village Resident messaged our Editor and the Parish Clerk about this scheme and the Clerk responded thus:

“The Parish Council has electric vehicle charging points firmly on its radar!

We decided not to apply under the first KCC scheme, as provision to Dover District was limited to just 4 charging points and it was felt that we would stand little chance in competition with Dover & Deal Town Councils and even Whitfield which have larger available sites and much greater throughput of vehicles.



Surprisingly, I have not yet received notification of a second round for the scheme; no doubt this will arrive in the next few days?

Our most recent discussion looked at possible suitable locations; the Parish Council only owns 6 pieces of land in the village which includes the allotments and King George V Playing Field. Options that may be possible are the Car Parks at Dragon Wood and at the bottom of Temple Side (the one at the top of Church Hill is too inaccessible) where electrical supply is nearby.

I'll endeavour to contact KCC tomorrow for details and try to get on the Agenda for our meeting next Tuesday evening.

Many thanks for bringing this to my attention.”



Victory House
168 -170 Snargate Street
Dover, CT17 9BZ
Follow us on Facebook and Twitter

On July 3rd a new venture will be opening on Snargate Street in Dover in the former Seafarer's Centre. The Sunrise Cafe is a community cafe professionally run as a social enterprise for the benefit of the whole Dover community, offering affordable food in a warm environment where everyone matters, where everyone is valued and where everyone is included.

The Cafe will operate a "pay what you can afford" model so that no one goes hungry, and customers will be able to "pay it forward" which allows someone else to benefit from their generosity. There are two tiers of pricing: full price, and discounts for customers on benefits or with no access to benefits. Our goal is to provide hearty food for all, including those who are hungry and struggling to put meals on the table for themselves or their families in the Dover area. The Cafe will be a place where there is kindness, friendship, sharing and true community spirit with meals being prepared, cooked and served by our professional cook and supported by wonderful volunteers!

To create our dishes we will use good quality surplus food supplied by local supermarkets, and the menu will change daily to make the best of these supplies. The Cafe menu will include a full cooked English breakfast from 8am until 11 am, mid-morning coffee and cake, plus a two-course lunch served until 2pm. We also hope to be able to offer after school meals for families one day a week.

We would love to see you there, and if you would like to support the Cafe by volunteering or offering food or funds, please let me know.

judithshilling@yahoo.co.uk

"Thousands of candles can be lighted from a single candle,
and the life of that candle will not be shortened. Happiness
never decreases by being shared."

Buddha



Friday Club

We are thinking positive that we may soon be able to resume our Club meetings.

We are booked at the Fox on 21st May for a Sausage & Chip Lunch, so all being well I shall be able to report on the success of the day in the next issue. This has been a long time coming so we are all getting excited. We shall play a game of Hoy, which is similar to Bingo but in a different format. We may also be able to have a mini raffle, but we shall have to see on the day.

There were several members' birthdays in May, namely Gloria Wilson, Roy Parks, Betty Carpenter and Reg Jenkins.

In the meantime, stay well and keep safe until next time.

Yvonne

Temple Ewell Village Store & Post Office

Donna and Robert Febrer - 01304 827100

As the weather gets warmer, check out our range of Ice Creams and Lollies.

Fresh Rolls, Cornish Pasties, and Bacon and Cheese Puffs, delivered daily.

We are now registered to accept Healthy Start vouchers in exchange for Milk, Vegetables and Pulses/Beans.

Drop your Dry Cleaning to us and Jilly's Dry Cleaners of Deal will collect, clean and then return.

Korker sausages available in store, in family size packs, chipolatas, chilli flavor and more.

Opening Hours:

Monday, Tuesday 8.15am - 5.30pm

Thursday, Friday 8.15am - 5.30pm

Wednesday Closed

Saturday 8.15am - 12.30pm

D .J. Plumbing Services

ALL ASPECTS OF PLUMBING
WORK UNDERTAKEN

- ◆ Ball valves
- ◆ Taps to tanks
- ◆ City & guild Qualified
- ◆ All work Guaranteed
- ◆ All jobs covered
- ◆ Big or Small
- ◆ Free Quotes
- ◆ No Call Out Charge
- ◆ Friendly & Reliable



Call Dave

01034 362485 / 07971 421766

Email: djplumbing@googlemail.com

Office: 79 The Street, Sholden, Deal CT14 0AJ

CLEVERLEY & SPENCER

Monumental Masons
Est 1869

Member of
NAMM, NAMLC, SAIF(ass)
BRAMM and **RQMF** registered

**CONTACT US FOR
FRIENDLY, HELPFUL ADVICE**

All types of memorials supplied
and cleaned throughout Kent,
East Sussex and London

CONTACT:

5 Frith Road, Dover

01304 206379

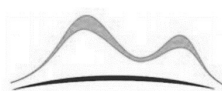
www.clevspen.co.uk

Dover Letting Agency

Home in on us for all your letting needs

- Tenant Find Only
- Fully Managed
- Reduced Commission on Property Transfers
- Guaranteed Rents & Legal Protection
- FREE Money Protection Insurance

01304 268101—www.doverlettingagency.co.uk
info@doverlettingagency.co.uk



6 Cherry Tree Avenue Dover Kent CT16 2NL



TEMPLE EWELL BAPTIST CHURCH

(Part of the Baptist family in Dover)

WHEN SHADOWS FALL

The wonderful words of Psalm 23 are, quite understandably, often spoken at funeral services.

"Even though I walk through the valley of the shadow of death, I will fear no evil, for you are with me; your rod and staff they comfort me."

Words of great comfort, spoken at a time of need. The rod and staff are the tools of a shepherd and make us aware of the presence of the great shepherd referred to at the beginning of this psalm. David knew what he was talking about when he wrote this passage, as he was a 24 hours a day shepherd.

Any visitor to Jerusalem may get a visual illustration of what David is saying. Pictures of the city are often taken from the Mount of Olives, across the Kidron valley, to Jerusalem on the opposite mount. The valley is deep and at this point runs from north to south. The result is that the sun sets early and quickly, with the shadow from the mount moving quickly down the valley. This gives us the setting for what David is talking about.

The shadow approaching can be that of hard times or of approaching death. This is a shadow that each of us will experience. If we know the security of The Lord being our own shepherd then we will also have the safety which David refers to; "I will fear no evil, for you (The Lord) are with me."

We are pleased to say that services are now held each week but we maintain Covid restrictions. All are welcome with a service on Sunday at 10.30am. If you would like us to pray for a particular need or require assistance in the mean time, then please telephone one of the numbers below.

If we can help in any way please do not hesitate to contact June on 822982, Jack on 825150 or our minister Ewart Graham on 375823. www.templeewellbaptistchurch.com



Temple Ewell Parish Council

By the time you read this the next stage of the relaxation of the Coronavirus restrictions will have happened from 17th May when meeting outdoors is now allowed in groups of up to 30, and indoors for up to 6 individuals or 2 households. Although social distancing should continue where possible, all businesses are now able to re-open and indoor venues re-open. Indoor performances and sports events can start with limits placed on numbers of spectators. Weddings of up to 30 persons are also now allowed. On the 21st June all further restrictions should be removed. The one worry is the growth in the Indian variant which seems to be more infectious and has increased infection rates in certain parts of the country. The one comfort is the continued roll-out of the vaccination programme, which will soon have been offered to all adults.

The last Parish Council meeting took place on the 25th May and was held outdoors in the Baptist Church Garden. Indoor meetings should re-commence in June.

The Highways Improvement Plan (HIP) for Lower Road with 20mph throughout, "NO HGV" signs plus extra double yellow lines, we have been told should be in place by July. We are also hoping that by the time you read this, the path to the allotments by the side of St Michaels will have been resurfaced. The work has been delayed by the inclement weather (more of that later) but it is hoped will be appreciated by the many users.

Our handyman Barry has given his resignation after several years of excellent service. We would like to thank him for all of his efforts to keep the village neat and tidy. We are therefore looking for a replacement. If you or anyone you know would like to take on this task, which is for 5 hours a week, please contact the Parish Clerk.

To update on the Village Hall, there was suddenly a rush on to repair warped flooring in time for the Kent County Council and Police Commissioner Election on the 6th May. This was the result of many months of the Hall not being used and being kept dry and ventilated. The work was finished just in time and we would like to congratulate David Beaney on his election as our County Councillor. He has replaced Geoff Lymer who we would like to

thank for the years of assistance he has given the village in giving advice and solving various issues and problems.

Progress has also been made in getting the Village Hall re-opened and ready to host a number of village groups and events. Guidance from the Parish Council has helped in the formation of a new committee that are helping to bring this about and they are thanked for their efforts to make this valuable village asset the place to go for your local meetings and functions. For bookings please contact John Holness on 01304 448140. Also look out for them on their new facebook page and the Parish Council website.

It has recently been confirmed that there will be a music event on the 28th August in memory of former Parish Councillor, Roger Marsden, who also helped run the Dover Music Festival, and of his brother Bernard. Both of these local villagers sadly died in the last year. The event will take place on the King George V playing field. It will feature local musicians and there will be various food and drink concessions. Please look out for further details.

Although we are at the end of May, there is little sign of summer. The biting cold wind throughout April and early May was replaced by a spell of really wet and sometimes windy weather for much of the later part of the month. I have certainly made the most of the few sunny spells that we have had, by getting out and about both in the village and the surrounding area. The trees are mainly in full leaf now and we have had several weeks of colourful blossom. The only pity is the large number of ash trees that have died from ash die-back that look particularly sad and forlorn. It is also good at this time of year to explore the various coastal paths, both along the White Cliffs near Dover and further along past Deal to Sandwich, where there is an abundance of wildlife to see.

I hope we catch up with sunny days in June and will update you again at the end of the month.

Glenn Mousley – Chairman of the Parish Council

Parish Clerk: Andy Howard-Grigg

Tel : 01304 361774 E-Mail : TempleEwellPC@Outlook.com



Temple Ewell Players

Nothing fresh to report this month so instead here's something to exercise those little grey cells! Below are anagrams of twelve popular pantomimes.

See if you can work out what they are.

Nice all red
Theo's go more
Pins out boss
Inters plum kilts
And dial
Bail baa
Doth tick tin wing
Stable gun, Yipee
Sack lean DJ at the bank
Twines how
Preen tap
Bathe us a Dane Betty

Answers are on page 29



Temple Ewell
Church of England Primary School

Dear Villagers

We are still operating our **amazon** wishlist.

We have been very fortunate with your continued support at school this year and the children (and Mr Morris) are very much enjoying the new items in school.

If you haven't yet, or want to again contribute the list is active using the link -

<https://amzn.eu/bxrZc0K>

Many thanks

Angela Matthews Head teacher

The meanings of words are constantly changing, here are a few recent additions to the Uxbridge Dictionary: -

1. Loophole...Device for cleaning the lavatory.
2. Offset...The regulating authority that inspects badgers.
3. Endorse...loser in the Grand National.
4. Incarnation...Immersed in evaporated milk.
5. Mendacity...Urban renewal programme.
6. Bleach...a hole in The Wall of China.
7. Dumbstruck...A white van.
8. Daunting...An alarm clock.
9. Demister...A castration device.
10. Curator...Someone who assess snooker equipment.

The Butchers Association Film Club are reviewing some of their favourite films this month, included are:-

You Only Liver Twice.
From Rasher With Love.
Never Say Heifer Again.
Tom Shanks in Pig.
Beef Encounter.
Play It Again Spam.
Escalope From Alcatraz.
The Little Chop of Horrors.
Reservoir Hot Dogs.
Saturday Night Cleaver.
The Loin King.
Jurassic Pork.



Pete Olpin

Disperse them

"A young clergyman, fresh out of training, thought it would help him better understand the harsh realities his future congregations faced if he first took a job as a policeman for several months. He passed the physical examination; then came the oral exam to test his ability to act quickly and wisely in an emergency. Among other questions he was asked, "What would you do to disperse a frenzied crowd?"

He thought for a moment and then said, "I would pass an offering plate."
He got the job.



WANTED

**WHITBREAD MINITURE
INN SIGNS
BY COLLECTOR**

TEL: COLIN 07788524400.



I am willing to pay £ depending on their condition

This advertising space available

Contact Jeanette for details

01304 826386

templewellnews@gmail.com



**Plumbing & Heating
Engineer**

J.C Gas is your local heating engineer, providing honest and impartial advice thus keeping your costs to a minimum.

We are still working, within government guidelines to meet your needs, and simply ask that you are not in the same room while work is being carried out and advise that you clean all surfaces after we have left.

Tel: 07824 634924 Email: jason.jcgas@gmail.com www.jcgasservgices.co.uk



Guitar Tuition

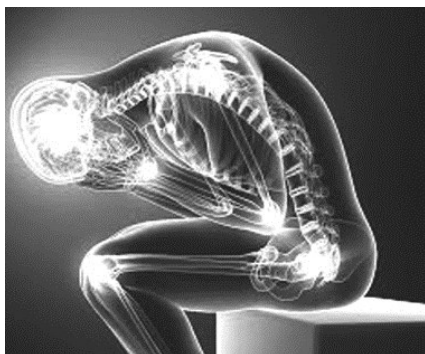
Enhanced CRB Check

Phone Steve 07792 349022



DOVER PHYSIOTHERAPY

TREATING THE ROOT
CAUSE OF PAIN AND
DYSFUNCTION



Do you have **aches and pains** that have built up over time?
A physiotherapist is trained to help reduce pain, correct postural dysfunction and bring flexibility back into your life.

Contact **Dover Physiotherapy** today to see how they can help you.

Phone: 01304 201072

Email: admin@doverphysio.co.uk

Web: Doverphysio.co.uk



COURT BARN FOOT CLINIC

Luisa Kelk - MCFHP MAFHP Dip FH

Registered Member of
The British Association of
Foot Health Professionals

- Nail Cutting
- Thickened Nails
- Corn and Callous Removal
- Ingrown Nail Removal
- Verruca Treatment
- Fungal Nail Treatment
- Diabetic Foot Care and Advice

To arrange a home visit, please contact

07527 660079

luisakelk@outlook.com

ROBERTS PAINTING & DECORATING

Family Run Since 2013

Interior & Exterior Painting

Professional Finish

Free Colour Matching Service

10% Off With This Ad

info@robertspaint.co.uk

07824 357704

Free Estimates—Fully Insured- 2yr Guarantee



Parish Church of St Peter & St Paul and St Mary's Lydden

June Services, to which we warmly welcome you. For details of our services please go to

www.facebook.com/templeewellpepaul

DATE	VENUE
6th 9am	Lydden
10.30am	Annual Parochial Church Meeting—all welcome
13th 10.30am	Temple Ewell
20th 9am	Lydden
27th 10.30am	Temple Ewell Patronal Festival

Dear Friends

Contemplative Walking

Many of us probably expected the easing of lockdown to bring a renewed sense of hope and light. For some of us, this is true, for others, things have gone the other way. The more lockdown eases, the more anxious we become. When we go through these difficult times, all our energy goes into surviving. It's only when we start to come out of this mess that we're able to understand what we've been through and recognise what helped us to ride the storm.

One of the ways to do this is to make time each day to be outside - to go on a contemplative walk. There is something about getting ourselves out into the world, and especially in this area of Outstanding Natural Beauty, to be in contact with the trees, bushes, flowers, swans, ducks, jays and crows that can invigorate us and offer us a new perspective on life. In the book of Jeremiah, God asks, "*Did I not fill heaven and earth?*" These walks are times to really experience that truth.

Contemplative walking doesn't necessarily mean walking slowly, but an opportunity to immerse ourselves in whatever is calling us in the moment, to notice the Kite flying high, soaring in the clouds or the beauty of the Swan which is hard to describe in words. It's something we have to experience with our senses.

As you begin to walk, allow a few moments simply to breathe and connect to your heart. Set an intention to be present to what is happening inside and around you. Begin walking and release yourself from any expectations. As you walk let your breath be long and slow. Bring your awareness to the detail off the beauty around you and let yourself go.

Notice what draws your attention. Look for what moves, the shapes and colours around you. Listen for the sounds of life, to the rustle of the breeze, or the birds singing creations song. Pause regularly to receive this gift. Breathe it in. Let it have some space and then continue until something else encourages you to stop – moving, listening, and pausing. We practice presence so that we might hear the voice of God speaking to us. This sounds simple, and yet we so rarely make the time.

In the words of Julian of Norwich:

“all shall be well, all shall be well, and all manner of things shall be well.”

Revd, Ian Parrish



A fresh start isn't a new place it's a new mindset

The Mangle Laundrette

21 Worthington Street, Dover Kent CT17 9AU
www.doverlaundrette.co.uk

For all your washing needs
All large items including duvets, blankets etc.

Ironing

PICK UP & DELIVERY SERVICE

(Normally same day)

APPOINTED AGENTS FOR JILLY'S DRY CLEANING

Call now on

01304 241235

07855385618



TEMPLE EWELL VILLAGE HALL

for all your functions

**To hire the hall
call John Holness
on 01304 448140**

KINGS **Fencing & Garden Maintenance**

Phone for a FREE Quotation

0771 999 88 54



Tony Wells

Professional Mole Catcher

Cost-effective traditional mole control

- No Mole - No Fee
- Free Survey
- Fully Insured

Tel: 01304 611090

Mobile: 07518 949587

Email: tonymolecatcher@gmail.com



TREE SURGERY
GARDEN MAINTENANCE

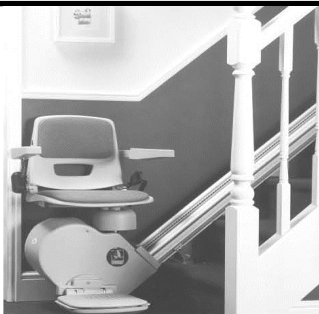
STUMP GRINDING
SERVICE

24 HOUR EMERGENCY CALL-OUT
Fully Insured
Free Quotes

NICK HENSON

01304 241400 / 07789 160092

nickhenson.nh@googlemail.com



LYDDEN LIFTS

Stairlift Enquiries:-

Mr J.V. Glass

Home: 01304 825534

Mobile: 07845 299 408

Office: 0800 016 9253

Email: lyddenlifts@hotmail.co.uk

Hillview, 70 Canterbury Rd, Lydden, Dover, Kent. CT15 7ES

YOUR LOCAL INDEPENDENT FAMILY OWNED FUNERAL SERVICE

SULLIVAN & SON

* Recommended by the Good Funeral Guide

* Recommended by the Natural Death Centre

* Funeral Contractor to Dover District Council

Instant estimate available here:

www.sullivanandson.co.uk

24 HOUR PERSONAL SERVICE:-

01304 201322

12 Beaconsfield Road, Dover, CT162LL



NHS APP

Many of us have been using the NHS Covid19 app on our phones to log into venues, but did you know there is another NHS app? (search for it as NHS without the Covid 19 bit). The most current use for this is that your **VACCINE STATUS** will automatically show on there for if you need proof. **It's the closest we currently have to a vaccine passport**, but it has many other uses:

Use this NHS App to:

- **share your COVID-19 status** – view and share proof of your COVID-19 status for travel
- **get advice about coronavirus** – get information about coronavirus and find out what to do if you think you have it
- **order repeat prescriptions** - see your available medicines, request a new repeat prescription and choose a pharmacy for your prescriptions to be sent to
- **book appointments** - search for, book and cancel appointments at your GP surgery, and see details of your upcoming and past appointments
- **get health advice** - search trusted NHS information and advice on hundreds of conditions and treatments. You can also answer questions to get instant advice or medical help near you
- **view your health record** - securely access your GP health record, to see information like your allergies and your current and past medicines. If your GP has given you access to your detailed medical record, you can also see information like test results and details of your consultations
- **register your organ donation decision** - choose to donate some or all of your organs and check your registered decision
- **find out how the NHS uses your data** - choose if data from your health records is shared for research and planning

Keeping your data secure - After you download the app, you will need to set up an NHS login and prove who you are. The app then securely connects to information from your GP surgery.

If your device supports fingerprint detection or facial recognition, you can use it to log in to the NHS App each time, instead of using a password and security code.



PET PHOTOS WANTED!

COMPETITION

BEST 12 PHOTOS WILL MAKE IT
INTO OUR
CALENDAR FOR 2022
and win a prize

To enter:

- * TAKE A PICTURE OF YOUR PET
- * EMAIL IT TO US
templewellnews@gmail.com
With your name and age if under 16
- * £2 entry fee per photo to be
submitted via BACS to Temple Ewell Newsletter
acc 12378809 sort 40-16-11 with your name as Reference

Rules:

You can send as many photos as you like, but each must be accompanied by a £2 fee

Photos can be colour or black and white

Any pets—dogs, cat, gerbils, rabbits, guinea pigs, budgies etc...

Special category for under 16 years old photographer

Closing date 30th August 2021.



The first of this month's entries is
13 year old Labrador,
Shadow Baldwin.

Sadly after submitting his photo his
owner, Hazel, had to make a sad
decision. She wrote -



"My beautiful black labrador died peacefully on April 29th, sympathetically assisted by vet, Julie, and nurse from White Cliffs Vets. He is missed so much.

Thank you to those who have tolerated his naughty moments, been his friends and -----allowed him to sit on your feet !!"



Jasper Hooper ,sunbathing



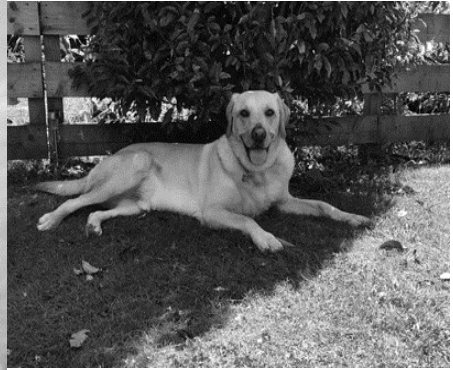
Oscar Hooper, thinking about dinner



Daisy Blenkinsop, playing in the snow

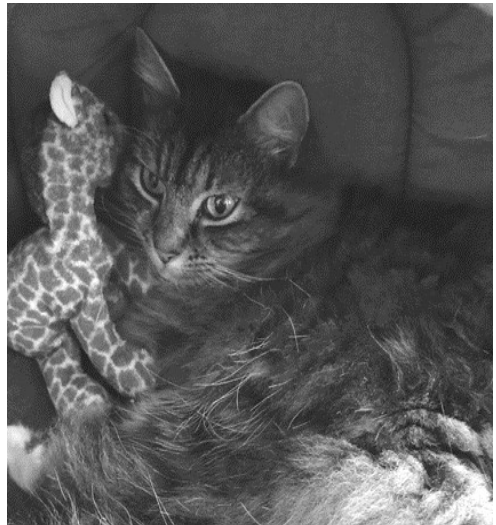


Coco Hooper, enjoying her stick



Zeus Hood age 7, enjoying the shade and playing in the snow

Local ducks sent in by Max's owner



Max Wallace age 12, getting the gossip from Geoff the Giraffe

The Lydden Bell



Available 7 days a week 12-2pm and 6-9pm

Sweet Chilli Baked Camembert with homebaked bread, chutney and grapes £6.95

Fried Whitebait with salad and tartare sauce £5.95

Cheesy Garlic Bread £2.95

Cheesy Chips £2.95

Ale Battered Haddock with handcut chips and peas £8.95

Chargrilled Homemade Burger with salad and handcut chips, Bacon and Brie, Plain or Stilton and Onion £8.95

Ploughmans Platter with mixed cheeses, ham, pickles, salad and homebaked bread £8.95

Wholetail Breaded Scampi with handcut chips and peas £8.95

Baby Back BBQ Ribs with Handcut chips, salad and coleslaw £8.95

Cumberland Sausages with Fried onion mash and peas £8.95

Roasted Vegetable Frittata with Side Salad £8.95

Call: '01304 830296' To place your Order



W. J. Farrier & Son Ltd

Independent Family Funeral Directors

Since 1948



PERSONAL 24-HOUR SERVICE

PRIVATE CHAPELS OF REST

TRADITIONAL, BESPOKE & ALTERNATIVE FUNERALS

CREMATIONS & BURIALS

ECO-FRIENDLY FUNERALS

HORSE DRAWN FUNERALS

INTERNATIONAL REPATRIATION

Golden Charter 

Smart Planning for Later Life

Pre-Paid Funeral Plans

Award Winners – 2007, 2009, 2010, 2011, 2013 & 2015

01304 201665

161 London Road
Dover, Kent
CT17 0TG



01303 245500

37 Bouverie Road West
Folkestone, Kent
CT20 2SZ

A personal service from your local Independent Family Funeral Directors

www.wjfarrierandson.co.uk

TEMPLE EWELL CHURCH OF ENGLAND PRIMARY SCHOOL



Looking for an OUTSTANDING school for your child?

Please call the school on 01304 822665 and we will arrange to send you
our virtual tour

‘Pupils are happy, safe and exceptionally well cared for’

(Ofsted Feb 2017)

3-4 Brookside, Temple Ewell, Dover
CT16 3DT



Temple Ewell
Church of England Primary School



R.C. McDONALD GENERAL BUILDERS



Your local Builder with over fifty years experience

Extensions, Renovations, Alterations and General Maintenance,
Roofing, Painting & Decorating

Tel: 01304 821139 or Mobile 07885 175683 for FREE Estimate



T.R.M. GROUNDWORKS & PENNOCK PLANT

DRIVES LANDSCAPING FENCING
AND
ALL GENERAL GROUNDWORKS

TELEPHONE 07850 298958 or 07860 501249



Lorna's Barber

Closed Mondays

Open all day Tues, Thurs, Fri

Wed 9am-12pm Sat 8.30am-3pm

Phone 07512 117730

2 High Street, Temple Ewell CT16 3DU

HarbouR
Print & Signs

auto graphics • signs • printing

t. 01304 208732

www.harbourprint.com

**FMW Painting
& Decorating**
Lady Decorator

07846 609 002

Francesca.wateridge@yahoo.co.uk



B.BAKER

GENERAL BUILDER

& HANDYMAN

**BRICKWORK REPOINTING FENCING
GENERAL REPAIRS HEDGE CUTTING
GUTTER & FASCIA CLEANING
LAWN MOWING PRESSURE WASHING**

Phone: 07823 337 832

Email: bakerben@gmail.com

No Job Too Small

The Seven Wonders of the World

A group of school children were asked to list what they thought were the present "Seven Wonders of the World." Though there were some disagreements, the following received the most votes:

Egypt's Great Pyramids
Taj Mahal
Grand Canyon
Panama Canal
Empire State Building
St. Peter's Basilica
Great Wall of China

While gathering the votes, the teacher noted that one student had not finished her paper yet. So she asked the girl if she was having trouble with her list. The little girl replied, "Yes, a little. I couldn't quite make up my mind because there are so many." The teacher said, "Well, tell us what you have, and maybe we can help." The girl hesitated, then read, "I think the "Seven Wonders Of The World" are:

To see
To hear
To touch
To taste
To feel
To laugh
To love

The room was so quiet you could hear a pin drop. The things we overlook as simple and ordinary and that we take for granted are truly wondrous. A gentle reminder - that the most precious things in life cannot be built by hand or bought by man.

Anagram answers from page 12

Nice all red (Cinderella) Theo's go more (Mother Goose)
Pins out boss (Puss in Boots) Inters plum kilts (Rumplestiltskin)
And dial (Aladdin) Bail baa (Ali Baba)
Doth tick tin wing (Dick Whittington) Stable gun, Yipee (Sleeping Beauty)
Sack lean DJ at the bank (Jack and the beanstalk) Twines how (Snow White)
Preen tap (Peter Pan) Bathe us a Dane Betty (Beauty and the Beast)

MARK WALTON

Tel: 01304 219886

Mobile: 07970 745272

**BRICKWORK CONTRACTOR
& BUILDER**

- Re-pointing
- Driveways
- New buildings
- Block-paving
- Alterations & Conservatories
- Extensions
- Patios

Cranbrook, Dover Road, Guston

Brabourne Gardening Services

Lawns mown | Edged | Dressed |
Scarified

Hedges cut | Trees pruned |
Shrubs tidied

Fencing and Patios

Weekly or Fortnightly Visits

One off clearances

Small removals undertaken

Tel:

Dennis Brown 01304 829712

or

Tom Bradley 07979 756682

For Free no obligation estimate



ATTENTION LANDLORDS & PROPERTY OWNERS

Looking to rent out your property in the village?
We are always in need of good quality properties for
our professional clients in the local area. We fully
reference all applicants.

Thinking of buying a property as an investment?

Free advice given

For further information contact:

Karen Southon at

Kearsney Property Services

Property Management | Property Sourcing | Lettings

Tel: 01304 825153

Email: Office@kearsneypropertyservices.co.uk



ELECTRICAL CONTRACTORS

All electrical work undertaken

Free, no-obligation quotations

Local business established for
over 60 years

sales@ejditton.co.uk

01304 205141



Rediscover your smile

Disillusioned with your loose dentures?
Don't wait any longer for a quick and
friendly solution. Have a free consultation
now, you might be surprised.

- * Fast service. Understanding with nervous patients
- * New dentures, acrylics, chromes and flexible
- * 1 hour repairs, Relines and additions
- * CLOSED Saturdays — by appointment only
- * Affordable dentures



Richard Price * Dip CDT RCS (eng) - Qualified Clinical Dental Technician (GDC no 231927)

Jamie Smith * Dip CDT RCS (eng) - Qualified Clinical Dental Technician (GDC no 233252)

Call or visit our clinic T: 01304 205516 51 Castle Street, Dover CT16 1PT

Also at Herne Bay Dentures Ltd, T 01227 741712

HUSK
Service and MOT Centre

The Freight Terminal
On the A2 at Lyden Hill
Dover
Kent
CT15 7JW
Tel: 01304 833 293



- Class 4,5 & 7 MOT's
- Express Oil Services
- Full Service
- Cars, Mini Buses & Light Commercial Vehicles
- Collection & Delivery service or Courtesy Cars available

Customer waiting area with free tea & coffee
Friendly, reliable service at competitive prices



SPECIAL OFFER 10% DISCOUNT

Open Monday to Friday 8.00am to 17.00pm | Saturday 8.00am to 13.00pm
Email workshop@huskuk.co.uk | www.dovermot.co.uk

INEPT BURGLARS

“Ssssh!”

“No, you sssh!” said one burglar to the other.

‘Well, one of us is going to have to be quiet
or a cell we’ll be sharing with each other’.



“Look, will you shine that torch for
me?”

Go on, what’s the matter?”

‘Errrm, what torch? I’ve forgotten
to bring it’

“I give up, I really do – all that
chatter

you gave to me before we came.

You’ve got this, you’ve brought that and the other.

So the one thing we really need
now we’ve all but blown our cover!”

“Hello, hello, hello, what have we here then?”

One policeman said without hesitation.

“Two burglars, I spy, with all our stuff.

Why have they broken into our Station?!”





Temple Ewell & District Produce Association

Well, after feeling hopeful last month about the possibility of an Autumn Show now this new variant could mean not having all restrictions ending in June we will once again have to wait and see what happens.

Just hoping the weather soon warms up to get the plants growing as most things seem to be slow at the moment. At least the rain is keeping them well watered.

Keep well and safe - hope to meet up soon.

Regards
Trevor and Edie

info@tedpa.club

Temple Ewell Art Workshop

We meet in the Village Hall every Wednesday

during term time 2-4pm

New members are welcome

Currently closed due to Covid19



Scout Hut at River

Friday - Beavers 4-30 to 5-30pm

Tuesday - Cubs 6-30 to 8-30pm

Monday - Scouts 6-30 to 8-30pm

MEMORIES OF TEMPLE EWELL IN 1930'S

It was 1932 when the Brooks family, Mum, Dad, brother John and me, moved to Temple Ewell from Dover as Mum wanted to live in the countryside. Our address was 'The Nook', Temple Ewell in what is now known as the High Street. Very few streets had titles in those days and the cottages all had names.

I don't know if Mum and Dad were aware that an abattoir was behind our house. Well, we did live next door to a pork butchers and we soon got used to the squeak and 'bumph' three or four times on a Sunday morning. The Butchers Shop was run by two quite small ladies the Misses Wyborn, with the help of a local man who did the heavy work. Opposite the butcher's shop was Miss Pennock's small grocery shop. You went down three large steps and there was hardly room for four people once you were inside. Miss Pennock was also the organist at the village Church when she wore smart hats with large brims.

Mr Sandell's house was opposite us. He was the coal merchant and his coal lorry was kept in the large shed on the other side of the Baptist Church. At the bottom of the road was Mrs Rayner's grocery shop and on our side was the Fox Inn. The village pump on the corner was still used by a number of people.

On the main road (as we called it) on the right going towards Dover was the Post Office with a Store and Bakery all in one building. Opposite, where the Dover Bus Stop is now, was a haberdashery and Mr Bensted's Newspapers and Boot and Shoe repair business. Mr Sheaff's farm was where Temple-side is now. His house faced the road with a garden behind a stone wall where the car park is now. He seemed rather old and was not very pleasant, so we kept out of his way. Going towards Canterbury on the right was the George and Dragon public house, and on the left -hand side was Mr Redman's rather elite grocery shop, where the Post Office is now. The shop had beautiful looking mahogany counters and at the end of one was a dangerous looking bacon cutter, also some butter patters and a cheese wire. Wines and Spirits were also on sale.

Cars were becoming more common and Mr Riggs took over the Forge and turned it into a garage. There are seven new houses there now. The Forge moved down to an old shed at the back of the Village Hall and so the horses were shod there. Further down what is now Templar Road, was another small shop on the right-hand side that sold fruit and vegetables. An orchard took up the remaining ground to the River Dour. The orchard belonged to Mr Davis who lived in an old house on the main road.

At the end of the road was our Fish and Chip Shop. It was a small wooden building attached to the stone wall that now leads to the late Roger Marsden's property. Mr Horton who owned the shop lived in the first of the two wooden buildings.

Turning left towards the two mills was the Donkey Inn run by Mr Harry Gambrill. At the side was a pristine bowling green that was very popular with the men of the Village. The old mill was still in use, the wheel being driven by the mill 'leat' water. We kept chickens and mum used to send me to get bran for them. I would stand just inside the mill door and watch the little wooden man go up and down on his platform as if he was turning the wheel!

As well as seven shops we had our own milkman in the Village. This was Mr Ernie Gambrill, who owned seven or eight cows which were kept in the field above the railway like at the top of Church Hill. The field was known as Bedlam and the field on the other side of the lane was called Cherry Carpet.

At the bottom of Bedlam field was a large gate which the cows came through, then over the slatted wooden railway bridge, down Church Hill and over the small wooden bridge at the bottom and along between the mills into Lower Road. About 100 yards along there was an open space where the river was shallow enough for the cows to go in the water and quench their thirst. Then back they would come, as far as the Donkey, where they turned into the driveway between the pub and the bowling green. At the back was a yard and a building where the cows were milked. Later in the day Mr Gambrill would come round with his churn of milk and he would pour a pint from his measure into our waiting jug. This cost about tuppence in 'old' money.

The local carpenter was Mr Austen who lived at Parsonage Cottage in Lower Road. His mode of transport was his pony and trap and he could often be seen with his faithful greyhound trotting along between the wheels of the trap.

Temple Ewell School has changed very little, just the addition of the cloak-rooms at the front. There used to be a bell in the roof of the little porch which would ring at 8.50am to make sure we got to school on time. Girls and boys were separated at play time. The girls used to be in the top playground and the boys at the bottom. The Sale Meadow (*as the George V Playing Field was then known*) was only used for organised games. There was no School at Whitfield in those days and no public transport. The children had to walk the mile or so down Green Lane with their packed lunches and back again in the evening.

We had just three teachers for about one hundred children. Mr Morrell, the Head Teacher, took the top class, 12 years to 14 years; Mrs Morrell, his wife, took middle class, 8 years to 11 years; Mrs Rogers took the infants 5 years to 7 years. Miss Rogers was very handy with her ruler on your knuckles if you misbehaved.

The large white house just beyond the George and Dragon was a private school run by Miss Falloon. She later moved along to St. Michaels, which is now used as home for those with learning difficulties. Miss Alexander and Miss Hayhoe, who lived on the main road near the station path, ran the very successful Drama Group in the Parish Hall. The Misses Kendall, who lived in the lovely old house then called Cyst Hydn, now Milestone House, took the Sunday School classes. It was here on Sunday 3rd September 1939 that we sat and listened to the wireless and heard Mr Chamberlain telling us that we were at war with Germany.

We were then sent home.....

Betty Pilcher
(nee Brooks)





CARE ENTERPRISES

Temple Ewell Nursing Home

Our aim is to provide high quality personalised nursing care to meet the needs of the individual whilst encouraging choice and independence in a friendly, relaxing and homely environment.

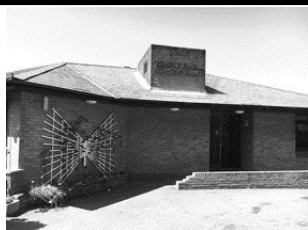
We are sensitive to our resident's requirements for privacy, confidentiality and personal dignity.

Home cooked fresh meals, regular activities and a full complement of highly trained nursing and care staff help us to maintain the best possible care and comfort for our residents.

Refurbishments to our home and improvements to our service are in process and ongoing.

If you or your loved one is considering the need for residential or nursing care, please feel free to contact us or come and visit us to see what we can offer.

We look forward to welcoming you to our home.



Temple Ewell Nursing Home

Wellington Road, Temple Ewell, Dover, Kent, CT16 3DB

01304 822206 (Office) / 01304 822246 (Nurses) / 01304 822208 (Fax)

www.temple-ewell.co.uk

admin@temple-ewell.co.uk / gillian@temple-ewell.co.uk

Tai Chi

Relax and get fit!

Wednesday, 5.30 – 6.30pm
Alkham Village Hall

For details of these and other classes
Contact Anna Dashwood
01304 205 405 / 07736 849 194
www.pfstaichi.com



This advertising
space available

Contact Jeanette
for details

01304 826386

templewellnews@gmail.com

Home Hairdressing Services

Call Sue on 07795 362812 *Fully insured*

Wet cut and blow dry £21

Ladies wet cut £15

Perms, colours and highlights
from £24



All colours require a skin test
before appointment.

Quality L'Oreal Majirel Colours
NHF + City & Guilds Qualified

Working hours are 9am - 2pm Monday to Friday School Term Times Only



The roadside gang of Temple Ewell for the Kent Wildlife
Trust started back on Tuesdays 9.30-3pm

To join us on our tasks call Bob Newington on 827138.
We also have Sunday tasks once a month.

New volunteers are welcome



Respectful, honest and caring dentistry from a long established private practice with the best of modern dental advances.

Ages 0 -100 years old (and more) welcome!

"Not at all anxious" to "Been dreading this for years" absolutely welcome.

**Dr Dorothy Riley and her team
look forward to welcoming you!**

www.doverpriorydental.com

**3 Priory Road, Dover, CT17 9RQ
01304206558**

Useful Telephone Numbers

Lydden Surgery	832160
NHS Out of hours medical service	111
Dover Health Centre	865500
Buckland Hospital	222510
Canterbury Hospital	01227 766877
William Harvey Hospital	01233 633331
Queen Elizabeth the Queen Mother Hospital	01843 225544
Dover District Council	821199
KCC Highways to report faults with roads/lights etc.	03000 418181
Citizens Advice Bureau	03448 487978
Dover Library	204241
Dover Leisure Centre	201145
Stagecoach Dover	08456 00 22 99
Tourist Information	205108
Dover Community Safety Unit	872220
Police Fire Ambulance - Emergencies	999
Police - to report a suspicious event	101
Police - to report a crime where the offenders have left	101
Social Services	03000 414141
Crimestoppers	0800 5551111
Gas Emergency	0800 111999
Electricity Emergency and Power Failure	0800 783 8866
Water Supply Emergency	0808 239 4130
Waste Water Emergency	0330 303 0368
Childline	0800 1111
The Samaritans	116 123
Post Office Customer Services	0845 7740 740
Dover Community Radio	744177
Age Concern Maggie Paterson	207268

The Temple Ewell Newsletter is published monthly in the interest of greater unity within the community. It is distributed free of charge. Editorially it aims to be free from political, sectarian and institutional bias and seeking neither to be divisive nor controversial, it does not support or oppose any cause.

The appearance of an advertisement in this Newsletter does not mean that we endorse the advertiser's goods or services. While we will not knowingly run an advert that is untrue, The Newsletter is not responsible for the accuracy of any advertising material or the usefulness of an advertised product or service.