

# tenews.co.uk

Temple Ewell Newsletter



### **Temple Ewell Organisations**

Parish Council Chairman	Mr Glenn Mousley	824121
Clerk to the Parish Council	Mr Andrew Howard-Grigg	361774
Police Community Support Officer	Megan Keehner	07929 049947
District Councillor	Mark Rose	07733 080861
County Councillor	Geoffrey Lymer	07960 490929
T E School Head Teacher	Mrs A Matthews	822665
Friends of TE School (Sally Parker)	friendsoftheschool@hotmail.com	
Sunday Club	Mrs J Miles	824280
Friday Club	Yvonne Sacker	330017
Art Workshop	Antionette Turret	826292
Brownies	Mrs A Newington	827138
Community Coffee Mornings	Mrs J Miles	824280
WI	Jan Luckhurst	331051
Produce Association	Trevor Barlow	824787
Temple Ewell Players	Mr M Brodie	07766 228728
Men's Club	Mr A Ladbrook	824948
Village Hall Bookings/Enquiries	John Holness	448140
Youth Club	Marilyn Holness	448140
Branching Out	Marilyn	448140
	Trish	820966
Kent Wildlife Trust Conservation Tasks	Bob Newington	827138
Short Mat Bowls Club	Audrey West	823511
Allotment Manager	Dominic Castle	07836 388458

### **St. Peter and St. Paul Temple Ewell**

Priest-in-charge: Revd. Ian Parrish 01304 279673 revd.irp@gmail.com

Church Warden - Mrs e Waller 824709 Dr Judith Shilling, 827692

PCC Secretary - Vacancy

PCC Treasurer - Chris Tyler 07715 078882

### **Baptist Church**

Rev Ewart Graham on 375823 or John Woodland on 822982

Hello All

Well there clearly won't be any Bonfire Night Parties this year, but I expect we will still hear fireworks going off at random times around the beginning of November as well as on the 5th when families may be having their own small displays in their gardens. My poor little

dog, along with lots of other pets and wild animals, suffer at this time. So, while not wanting to be a killjoy, I'm hoping that the pandemic means fewer bangs than we've become accustomed to in recent years.



Remembrance Sunday on 8th November is another event to be very different this year. It is suggested that people stand on their doorstep at 11am for a national two minute silence. Poppy sellers may not be around as in previous years but poppies are readily available to buy at : <https://www.poppypshop.org.uk/collections/poppy-appeal> .

In case, like me, you find it confusing to try and keep up with exactly what we are and aren't allowed to do currently under Covid regulations, Kent County Cllr Geoff Lymer's piece on page 36 could be helpful to keep to hand as it lists all the do and don'ts for the three Alert Levels.

[www.tenews.co.uk](http://www.tenews.co.uk)

Editor: Jeanette Potts

Email: [templeewellnews@gmail.com](mailto:templeewellnews@gmail.com) Tel: 01304 826386

Address: 13 Chilton Way River CT17 0QB

We welcome all contributions to the content of the Newsletter, but please remember that the deadline date for the next issue is 8pm on the 15th of the preceding month. However, please note, there is no August or January issue of the Newsletter.

NOTE: You should be aware that articles are also published on the website [www.tenews.co.uk](http://www.tenews.co.uk) - please inform us if you want any part of your article withheld from that particular medium.

A copy of every Newsletter is posted on the website, including the village diary. Make sure you log on to [www.tenews.co.uk](http://www.tenews.co.uk)

#### **Temple Ewell Newsletter Editorial Committee**

Treasurer / Editor / Web	Jeanette Potts	826386
Chair / Distribution	Jenny Miles	824280
Vice Chair	Jenny Olpin	825011
Secretary	Ruth Horton	268998
Members:	Cindy Tuson	823325
	Lisa Scrivens Waghorn	-
	Barbara Sheridan	827493



## Village Diary

### Nov

Thurs 5	Coffee Morning 10am in the Village Hall
Thurs 12	W.I. Meeting 7pm in the Village Hall
Thurs 19	Coffee Morning 10am in the Village Hall
Tues 24	Parish Council Meeting 7.15pm in the Baptist Hall

### Dec

Thurs 3	Coffee Morning 10am in the Village Hall
Thurs 10	W.I. Meeting 7pm the Village Hall
Thurs 17	Coffee Morning 10am in the Village Hall
Fri 18	Newsletter Prize Draw takes place

## 2021

### Jan

Thurs 14	W.I. Meeting 7pm in the Village Hall
Tues 26	Parish Council Meeting 7.15pm in the Baptist Hall

### Feb

Thurs 11	W.I. Meeting 7pm in the Village Hall
Tues 23	Parish Council Meeting 7.15pm in the Baptist Hall

## **Mar**

Thurs 11      W.I. Meeting 7pm in the Village Hall  
Tues 30      Parish Council Meeting 7.15pm in the Baptist Hall

## **Apr**

Thurs 8      W.I. Meeting 7pm in the Village Hall  
Tues 27      Annual Parish Meeting 7.15pm in the Baptist Hall

## **May**

Thurs 13      W.I. Meeting 7pm in the Village Hall  
Tues 25      Parish Council Meeting 7.15pm in the Baptist Hall

## **June**

Thurs 10      W.I. Meeting 7pm in the Village Hall

## **July**

Thurs 8      W.I. Meeting 7pm in the Village Hall

**Links to the following information leaflets can  
be found on our  
HOME PAGE**

**1.      200409 Services in Dover\_Edition 5**

*(a list of all possible phone numbers etc. that you may need)*

**2.      little-booklet-of-phone-scams**

**3.      NHS-CoVID-19-Parent-Guide**



**tenews**  
Temple Ewell Newsletter  
co.uk

**XXXX**

# **TENews 20th Anniversary Draw**



**First Prize £100 Cash**

**Second Prize A Case of Wine**

**& Lots of Other Prizes**



*The draw will take place at Temple Ewell on Friday 18th December 2020*

Promoter: Jeanette Potts, 13 Chilton Way, River, Dover, CT17 0QB.  
Registered under The Gambling Act 2005 with Dover District Council. Licence No. LN/000006769.  
Printed by [www.raffleticketsdirect.co.uk](http://www.raffleticketsdirect.co.uk)

**TICKETS £1 each**  
*thank You for your Support.*

**NOW AVAILABLE IN THE FOX,  
LORNA'S AND THE VILLAGE STORE**

PLEASE SUPPORT OUR PRIZE DRAW, it will help us  
continue to bring you your Newsletter 10 times a year.

**THANK YOU**



## FRIDAY CLUB

Friday Club is still unable to meet up due to the virus. We have a membership of 35 and it is quite impossible to have a get together any time soon. It is becoming more apparent as time goes on that this will continue into the New Year but we are keeping in touch by telephone.

A couple of our members have been poorly recently so we would like to send our best wishes to: Shelia Canning, Brenda Innes and Moira Mason and anyone else who are feeling under par.

Darker evenings and the cold weather is now upon us so try to keep warm and stay safe.

Until next time

***Yvonne***

### **Temple Ewell Village Store & Post Office**

**Donna and Robert Febrer - 01304 827100**

Selection of beers, wines, spirits and tobacco.

Fresh Bread, Cakes, Rolls, French Sticks available to order for next day delivery

Drop your Dry Cleaning to us and Jilly's Dry Cleaners of Deal will collect, clean and then return.

Get your 2021 calendar of the local area from Peter Kesby Photography

When you're shopping online, use Click and Collect option and get your parcels delivered to the Post Office at your convenience

Fancy a fry up, get your Bacon, Sausages, free range Kent eggs, Hash Browns and Tomatoes.

#### **Opening Hours:**

**Monday, Tuesday 8.15am - 5.30pm**

**Thursday, Friday 8.15am - 5.30pm**

**Wednesday Closed**

**Saturday 8.15am - 12.30pm**

## D .J. Plumbing Services

ALL ASPECTS OF PLUMBING  
WORK UNDERTAKEN

- ◆ Ball valves
- ◆ Taps to tanks
- ◆ City & guild Qualified
- ◆ All work Guaranteed
- ◆ All jobs covered
- ◆ Big or Small
- ◆ Free Quotes
- ◆ No Call Out Charge
- ◆ Friendly & Reliable



**Call Dave**

**01034 362485 / 07971 421766**

Email: [djplumbing@googlemail.com](mailto:djplumbing@googlemail.com)

Office: 79 The Street, Sholden, Deal CT14 0AJ

## CLEVERLEY & SPENCER

**Monumental Masons**  
**Est 1869**

Member of  
**NAMM, NAMLC, SAIF(ass)**  
**BRAMM** and **RQMF** registered  
**CONTACT US FOR**  
**FRIENDLY, HELPFUL ADVICE**  
All types of memorials supplied  
and cleaned throughout Kent,  
East Sussex and London

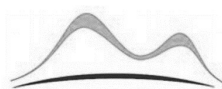
**CONTACT:**  
**5 Frith Road, Dover**  
**01304 206379**  
**[www.clevspen.co.uk](http://www.clevspen.co.uk)**

## Dover Letting Agency

**Home in on us for all your letting needs**

- Tenant Find Only
- Fully Managed
- Reduced Commission on Property Transfers
- Guaranteed Rents & Legal Protection
- FREE Money Protection Insurance

**01304 268101—[www.doverlettingagency.co.uk](http://www.doverlettingagency.co.uk)**  
**[info@doverlettingagency.co.uk](mailto:info@doverlettingagency.co.uk)**



**6 Cherry Tree Avenue Dover Kent CT16 2NL**





# TEMPLE EWELL BAPTIST CHURCH

(Part of the Baptist family in Dover)

## WORRY?

When someone expressed their anxiety, my mother could be heard to say "Some people worry about the ducks going bare foot." I have often thought that this was not the most helpful of sayings, particularly in times of great stress.

The enduring problems resulting from the international virus Covid 19 give real cause for worry. There is fear of potentially catching a fatal disease; many consequences causing financial hardship; enforced social isolation affecting our state of mind, and bleak prospects for the future. To be told "Do not worry" sounds trite, and at best like an ostrich putting its head in the sand to pretend something does not exist. If, on the other hand, these words were spoken by someone with the power and ability to alter the situation, then that would be a different matter. Instead of PRETENCE we need REALITY.

Jesus Christ said the following words in Matthew's Gospel Chapter 6, which are often quoted and of particular relevance at this time.

"Therefore I tell you, do not worry about your life, what you will eat or drink; or about your body, what you will wear. Is not life more important than food, and the body more important than clothes? Look at the birds of the air; they do not sow or reap or store away in barns, and yet your heavenly Father feeds them. Are you not much more valuable than they? Who of you by worrying can add a single hour to his life?'..... Jesus finishes by saying "So do not worry....But seek first God's kingdom and his righteousness and all these things will be given you as well."

Services are now being held each Sunday at 10.30am.

All are welcome but face masks must be worn in accordance with our Government directions. The chairs are socially distanced and hand sanitisers are provided. We do have some music although we do not sing. There is prayer, Bible reading and a short sermon.

If we can help in any way please do not hesitate to contact June on 822982, Jack on 825150 or our minister Ewart Graham on 375823. [www.templeewellbaptistchurch.com](http://www.templeewellbaptistchurch.com)



## Temple Ewell Parish Council

Coronavirus continues to dominate our lives, but although the number of infections is rising in the Dover area, the rate is still much lower than much of the rest of the country. We try to continue in the village in as normal a way as possible and although the village school, churches and shops remain open and provide vital services, they have all had to adapt to the current regulations. Fortunately, in Kent, although restrictions have become tighter, most recently with the 10.00pm curfew in pubs and restaurants, we are more fortunate than many in the north of the country. I was in The Fox a couple of weeks ago and felt a very efficient and safe system was being operated.

We re-iterate that all parishioners should keep to current government guidelines to help keep coronavirus infection rates and of course deaths as low as possible. It does seem very much the new normal to have to remember your face mask when going into any shops etc. The only problem I find is that they make my glasses mist up!

Our last Parish Council meeting was held online on Zoom. We were pleased to co-opt Mr Dave Prescott onto Parish Council and feel sure he will be able to make a useful contribution to the village.

We discussed the Christmas lights switch-on event and unfortunately this cannot be held this year. We will have a tree and decorations at Players' Corner but unfortunately no Santa Claus, brass band, mince pies, mulled wine or the pantomime dame to turn on the lights. For many years, this has marked the start of Christmas in the village and its absence reflects the more sober times that we find ourselves in.

On a happier note, our Clerk and Councillor Lynda End recently carried out the judging of the allotments for 2020 and have awarded vouchers to:

1. The Best Kept Allotment category in which there were 5 winners – Teresa Davis, Cheryl James, Mr N Price, Peter Upton and Dominic Castle.
2. The Best Newcomer category in which there were 2 winners – Mark Griffiths and Curtis Goldfinch.

It certainly seems every time I walk up by the allotments that there is a hive of activity and the standard was considered to be the best for many a year.

We are also pleased to announce that we have a new PCSO, Richard Bradley. However, he has to cover a total of 12 parishes and with our low crime rate we may not be seeing too much of him. In the recent past we had a full time PCSO for the village, so it is a pity that times have changed to reduce police presence.

We have recently had a traffic survey in both London Road and Lower Road. This was the first stage of our Highways Improvement Plan (HIP) but unfortunately did not reveal the high level of speeding traffic that villagers suspected. However we will be meeting with Kent Highways in the near future to discuss the various traffic calming measures that may be considered appropriate for the village. In Lower Road, there are far too many vehicles using it as a “rat run” which endangers the lives of residents and school children alike on a daily basis, bearing in mind there is no footpath for much of its length. A number of proposals will be considered including residents parking, making the road one way or a no through road, traffic calming measures etc. Each proposal comes with a set of challenges but we hope to make life safer for all residents. Parking is a particular concern as we have been told that despite our protests, double yellow lines will soon be put in place in the Alkham Valley Road for the length of Kearsney Abbey, Russell Gardens and Bushy Ruff.

We are now in the midst of autumn and the nights are drawing in. The weather is getting colder, but we still have a number of cold, crisp days to carry out those remaining chores in the garden before winter is upon us. I look forward to catching up with you all again next month.

***Glenn Mousley – Chairman of the Parish Council***

**Parish Clerk:**

**Andy Howard-Grigg**

**Tel : 01304 361774    E-Mail : [TempleEwellPC@Outlook.com](mailto:TempleEwellPC@Outlook.com)**

# **WOULD YOU LIKE TO ADVERTISE WITH US!**

## **Temple Ewell Newsletter** **2020 -2021 Advertising Price List**

Newsletter and website (with a link to your website)

¼ page      £75

½ page      £150

Full page    £270

Pays for the whole year (10 issues x delivery to  
approx.750 households each issue)

### **One offs :**

¼ page    £15

½ page    £28

Full page £50

**Phone: 01304 826386**

**Email: [templewellnews@gmail.com](mailto:templewellnews@gmail.com)**

*Free help with layout / artwork if required*

## RIVER ART GROUP

We currently have **vacancies** in our Class that meets on

Tuesday mornings 9.30-11.30am term times

in River Village Hall (cost is £50 per term)

Our teacher is well known local artist, Penny Bearman

Call Jeanette on 01304 826386 for more info

**COME AND JOIN US**



Plumbing & Heating  
Engineer

J.C Gas is your local heating engineer, providing honest and impartial advice thus keeping your costs to a minimum.

**We are still working, within government guidelines to meet your needs, and simply ask that you are not in the same room while work is being carried out and advise that you clean all surfaces after we have left.**

Tel: 07824 634924 Email: [jason.jcgas@gmail.com](mailto:jason.jcgas@gmail.com) [www.jcgasservgices.co.uk](http://www.jcgasservgices.co.uk)



## Guitar Tuition

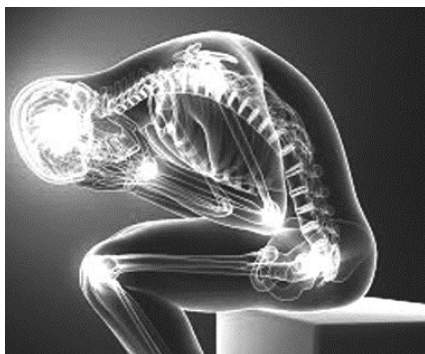
### Enhanced CRB Check

**Phone Steve 07792 349022**



## DOVER PHYSIOTHERAPY

TREATING THE ROOT  
CAUSE OF PAIN AND  
DYSFUNCTION



Do you have **aches and pains** that have built up over time?

A physiotherapist is trained to help reduce pain, correct postural dysfunction and bring flexibility back into your life.

Contact **Dover Physiotherapy** today to see how they can help you.

**Phone:** 01304 201072      **Email:** [admin@doverphysio.co.uk](mailto:admin@doverphysio.co.uk)

**Web:** [Doverphysio.co.uk](http://Doverphysio.co.uk)



## COURT BARN FOOT CLINIC

Luisa Kelk - MCFHP MAFHP Dip FH

Registered Member of  
The British Association of  
Foot Health Professionals

- Nail Cutting
- Thickened Nails
- Corn and Callous Removal
- Ingrown Nail Removal
- Verruca Treatment
- Fungal Nail Treatment
- Diabetic Foot Care and Advice

To arrange a home visit, please contact

**07527 660079**

**[luisakelk@outlook.com](mailto:luisakelk@outlook.com)**

## ROBERTS

PAINTING & DECORATING

Family Run Since 2013

**Interior & Exterior Painting**

**Professional Finish**

**Free Colour Matching Service**

**10% Off With This Ad**

**[info@robertspaint.co.uk](mailto:info@robertspaint.co.uk)**

**07824 357704**

Free Estimates—Fully Insured—2yr Guarantee



## Parish Church of St Peter & St Paul

For readings, prayers and links to the Church of England services, please go to [www.facebook.com/templeewellpepaul](https://www.facebook.com/templeewellpepaul)

*Our services for November, to which we warmly welcome you:*

Weds	11:30am, Prayer and Share at Temple Ewell
1 <sup>st</sup>	9:00am, joint Holy Eucharist at Lydden for All Saints' Day
1 <sup>st</sup>	10:30am, family faith, fun and fellowship at Temple Ewell
8 <sup>th</sup>	9:30am, joint Holy Eucharist at Lydden for Remembrance Sunday, with wreath laying at the war memorial <i>Full details to be confirmed</i>
11 <sup>th</sup> (Weds)	10:30am, service for Remembrance Day followed by with wreath laying at the war memorial at 11:00am
15 <sup>th</sup>	10:30am, joint Holy Eucharist at Temple Ewell for All Souls
22 <sup>nd</sup>	9:00am, joint Holy Eucharist at Lydden
29 <sup>th</sup>	10:30am, joint Holy Eucharist at Temple Ewell – the first Sunday of Advent

First of all, many thanks to all of you who came to see us at the bench for Temple Ewell's Gift Day and donated to the upkeep of the church. Your donations and discussion were very much appreciated. If you ever have questions about what we are doing or planning, please do let us know.

It feels as if we are well and truly settled into autumn as the days get cooler and the leaves continue to drop. Sweeping them up every few days has become an established form of exercise at our house! We are also settling back into established services, and November sees a lot that are very special to many people.

All Saints' Day and the commemoration of the faithful departed on All Souls' Day are both celebrated this month. All Saints' Day on November 1<sup>st</sup> celebrates men and women in whose lives the Church as a whole has seen the grace of God powerfully at work. It is an opportunity to give thanks

for that grace, and for the wonderful ends to which it shapes a human life; it is a time to be encouraged by the example of the saints and to recall that sanctity may grow in the ordinary circumstances, as well as the extraordinary crises, of human living.

The commemoration of the faithful departed, which we celebrate on November 15<sup>th</sup>, allows us to remember with thanksgiving before God those whom we have known more directly: those who gave us life, or who nurtured us in faith. This year we will be decorating the church with white lilies, and if you would like to buy one in memory of a loved one who is no longer with us, please let us know.

On Remembrance Sunday, we will be at Lydden for our Parish Eucharist, and we hope that the service will be followed by a procession to the war memorial where wreaths will be laid (details to be confirmed). The coronavirus guidance only allows 6 people to be present at the memorial, but we can remain in church in silence and prayer for as long as we want to. This year we will also commemorate Remembrance Day on November 11<sup>th</sup> with a church service at 10:30am in Temple Ewell and the laying of wreaths and naming the fallen of the village at 11am. We are not limited to any number as we are doing this in church grounds, so if you would like to lay a wreath please let us know.



At the end of the month we enter the season of advent, but that's a topic for another newsletter! Until then, stay safe and well and we hope to see you at some of our services this month.

***Judith Shilling***



**ALL SAINTS DAY — NOVEMBER 1st**  
**ALL SOULS DAY — NOVEMBER 2nd**



# The Mangle Laundrette

21 Worthington Street, Dover Kent CT17 9AU  
[www.doverlaundrette.co.uk](http://www.doverlaundrette.co.uk)

For all your washing needs  
All large items including duvets, blankets etc.

Ironing  
**PICK UP & DELIVERY SERVICE**  
(Normally same day)

**APPOINTED AGENTS FOR JILLY'S DRY CLEANING**

**Call now on**  
**01304 241235**  
**07855385618**



## TEMPLE EWELL VILLAGE HALL

*for all your functions*

**To hire the hall**  
**call John Holness**  
**on 01304 448140**

  
**Fencing & Garden  
Maintenance**

Phone for a FREE Quotation  
**0771 999 88 54**



# Tony Wells

## Professional Mole Catcher

**Cost-effective traditional mole control**

- No Mole - No Fee
- Free Survey
- Fully Insured

Tel: 01304 611090

Mobile: 07518 949587

Email: [tonymolecatcher@gmail.com](mailto:tonymolecatcher@gmail.com)



TREE SURGERY  
GARDEN MAINTENANCE

STUMP GRINDING  
SERVICE

24 HOUR EMERGENCY CALL-OUT  
Fully Insured  
Free Quotes

**NICK HENSON**

**01304 241400 / 07789 160092**

**[nickhenson.nh@googlemail.com](mailto:nickhenson.nh@googlemail.com)**



## LYDDEN LIFTS

Stairlift Enquiries:-

Mr J.V. Glass

**Home: 01304 825534**

**Mobile: 07845 299 408**

**Office: 0800 016 9253**

Email: [lyddenlifts@hotmail.co.uk](mailto:lyddenlifts@hotmail.co.uk)

Hillview, 70 Canterbury Rd, Lydden, Dover, Kent. CT15 7ES

YOUR LOCAL INDEPENDENT FAMILY OWNED FUNERAL SERVICE

## SULLIVAN & SON

\* Recommended by the Good Funeral Guide

\* Recommended by the Natural Death Centre

\* Funeral Contractor to Dover District Council

*Instant estimate available here:*

**[www.sullivanandson.co.uk](http://www.sullivanandson.co.uk)**

24 HOUR PERSONAL SERVICE:-

**01304 201322**

12 Beaconsfield Road, Dover, CT162LL



## Going Wild Summer 2020

Now Tiddlers, the Tuesday morning Parent/Child group has ended, a small group of adults, led by Jon Regan, decided to continue the School Holiday Going Wild sessions held in the Woods up on the Minnis. This attracts a range of ages from tiny babies to 10 year olds as age is no restriction to this morning of fun in the Woods.

The children would explore the nature around them whilst Mums, Dads and carers sat on their rugs catching up. The rope swings were ever popular as children learnt new skills with increasing confidence. Visits to the Badger sett was enthusiastically received as was the fun to be had at the 'bomb hole'!

Other activities of clay moulding, painting and the making of swords and bow and arrows were attempted whilst the biggest attraction was building the bonfire and the roasting of marshmallows!

The weather was beautiful throughout the summer but one day in the woods it rained continually and the children literally wallowed in the mud..... hopefully I can report on the next visit to see the moths and bats soon!

***Jenny Olpin***



## He Did it!!

As reported in October's Newsletter, Chris Barnett of Temple Ewell took up the 330 mile Pilgrims Hospice Tour de Castles Virtual Cycle Challenge. Christopher did well from Day 1 'chipping off' 6 miles here then 25 miles there, in fact taking any opportunity during his day albeit in Canterbury or Dover or even a short dash to the Lydden.

Members of the Temple Ewell Bike Club, Amanda, Steve, David, Phil or Jenny, joined Chris on occasions so as to give him support as gradually his goal of 330 miles was in sight. On his final stretch, (he had 5 miles left), we joined him on a gentle ride to the Dover seafront. During our celebration tea and cake back at Temple Ewell our thoughts were of our dear friend Bob Potts in whose memory Chris did the ride.

Well done Chris for a fantastic ride and collecting around £ 500 in donations for the Pilgrims Hospice..... (and many thanks to Gloria for the lovely cake!)

### ***Jenny Olpin***

In today's post I received a nice letter from Pilgrims Hospice and a finishers medal (really good quality).

Thought you would like the following info in view of your support which you generously gave and is much appreciated.

- Total miles by the collective cyclists 9,795
- Total raised £7,260 enough to provide 13 patients with one week's specialist care at home
- My individual sum raised £427 + gift aid enough to fund medication for four days at one of the Hospice inpatient units

Best wishes and thanks,

***Chris Barnett***



# The Lydden Bell



Available 7 days a week 12-2pm and 6-9pm

Sweet Chilli Baked Camembert with homebaked bread, chutney and grapes £6.95

Fried Whitebait with salad and tartare sauce £5.95

Cheesy Garlic Bread £2.95

Cheesy Chips £2.95

Ale Battered Haddock with handcut chips and peas £8.95

Chargrilled Homemade Burger with salad and handcut chips, Bacon and Brie, Plain or Stilton and Onion £8.95

Ploughmans Platter with mixed cheeses, ham, pickles, salad and homebaked bread £8.95

Wholetail Breaded Scampi with handcut chips and peas £8.95

Baby Back BBQ Ribs with Handcut chips, salad and coleslaw £8.95

Cumberland Sausages with Fried onion mash and peas £8.95

Roasted Vegetable Frittata with Side Salad £8.95

Call: '01304 830296' To place your Order



W. J. Farrier & Son Ltd

# Independent Family Funeral Directors

Since 1948



**PERSONAL 24-HOUR SERVICE**  
**PRIVATE CHAPELS OF REST**  
**TRADITIONAL, BESPOKE & ALTERNATIVE FUNERALS**  
**CREMATIONS & BURIALS**  
**ECO-FRIENDLY FUNERALS**  
**HORSE DRAWN FUNERALS**  
**INTERNATIONAL REPATRIATION**

**Golden Charter**   
Smart Planning for Later Life

**Pre-Paid Funeral Plans**

**Award Winners – 2007, 2009, 2010, 2011, 2013 & 2015**

**01304 201665**

161 London Road  
Dover, Kent  
CT17 0TG



**01303 245500**

37 Bouverie Road West  
Folkestone, Kent  
CT20 2SZ

*A personal service from your local Independent Family Funeral Directors*

[www.wjfarrierandson.co.uk](http://www.wjfarrierandson.co.uk)



We have accommodation for up to eighteen women and their children at any one time. Currently fifteen children are residing with us, however this will change as families move in and out before Christmas. Please can you help us?

**The following is a list of donations that can be either brought to the Toy Service at the Church or given to Amanda Lomas or Jenny Miles**

### **Christmas Gifts Wish List 2020**

- Toys for 0 to 3 year olds – wooden puzzles, LEGO Duplo cars, wooden animals, sorting games
- Toys – dressing up/role play items, multicultural dolls, Dobble game
- Teenage gifts – LEGO Technics, board games, UNO card game, Amazon gift card, Sports Direct gift card, manicure set, Teen colouring / doodle books
- Books – David Walliams, Diary of a Wimpy Kid, lift the flap books, touch and feel books
- Diaries & Calendars – to help our mums with planning for the future
- Pyjamas & Dressing Gowns for Women – please include gift receipt so they can be changed for different size if needed
- Vouchers from Sports Direct, Primark, ASDA, Tesco, Sainsbury's so that we can purchase clothing in the correct size
- Christmas biscuits, mince pies, cake, selection boxes
- Small kitchen equipment – Mugs, cutlery sets, 4 place dinner sets, utensil sets, baking trays, roasting tins, measuring jugs, mixing bowls, casserole dishes, baking equipment
- Small lamps
- Hand & Bath Towels
- Single bedding – for mums and children

**Please no candles or alcohol  
Christmas presents should be new and unwrapped**



## **Home-Start Dover District are recruiting volunteers NOW!**

Are you interested in volunteering for a local charity? If so, then please consider giving us 2-3 hours of your time, every week, to support a local family with at least 1 child under 11. YOU can make a difference and give something back to your community. Training starts 15th September 2020.

Contact us today to find out more

**office@homestartdover.org.uk**  
**01304 242314**

Charity no. 1102201

The Ark, Noah's Ark Road, Tower Hamlets, DOVER, CT17 0DD

**HOME  
START**  
Dover District





## Letters to the Editor

We would like to hear from you. What do you want information on? Need help with something? Want to comment on a local issue? This is the place to do it!

Send to the Editor — details on page 3.



### Scout Hut at River

Friday - Beavers 4-30 to 5-30pm

Tuesday - Cubs 6-30 to 8-30pm

Monday - Scouts 6-30 to 8-30pm

## Temple Ewell Art Workshop

We meet in the Village Hall every Wednesday

during term time 2-4pm

New members are welcome

***Currently closed due to Covid19***



# **R.C. McDONALD GENERAL BUILDERS**



*Your local Builder with over fifty years experience*

Extensions, Renovations, Alterations and General Maintenance,  
Roofing, Painting & Decorating

**Tel: 01304 821139 or Mobile 07885 175683 for FREE Estimate**



## **T.R.M. GROUNDWORKS & PENNOCK PLANT**

DRIVES LANDSCAPING FENCING  
AND  
ALL GENERAL GROUNDWORKS

**TELEPHONE 07850 298958 or 07860 501249**



## Lorna's Barber

Closed Mondays

Open all day Tues, Thurs, Fri

Wed 9am-12pm Sat 8.30am-3pm

**Phone 07512 117730**

**2 High Street, Temple Ewell CT16 3DU**

## HarbouR

Print & Signs

auto graphics • signs • printing

t. 01304 208732

[www.harbourprint.com](http://www.harbourprint.com)

FMW Painting  
& Decorating  
Lady Decorator

07846 609 002

[Francesca.wateridge@yahoo.co.uk](mailto:Francesca.wateridge@yahoo.co.uk)



**B.BAKER**

**GENERAL BUILDER**

**& HANDYMAN**

BRICKWORK REPOINTING FENCING  
GENERAL REPAIRS HEDGE CUTTING  
GUTTER & FASCIA CLEANING  
LAWN MOWING PRESSURE WASHING

**Phone: 07823 337 832**

**Email: [bakerben@gmail.com](mailto:bakerben@gmail.com)**

*No Job Too Small*



# Temple Ewell

## Church of England Primary School

As we are again adjusting to our new normal, I wanted to write and thank you for the support you have showed our village school. We have had some lovely messages from groups in the community and offers of support and it is heart-warming to know we are thought about so highly.

People have been kind enough to offer financial support too and with that in mind we have set up an Amazon wish list where you can purchase items for the school which will be sent direct to us. <https://amzn.eu/bxrZc0K>

We have also registered with Northbrook Fundraising who sell greetings cards and wrapping paper. If you are able to purchase online using the school code, we are able to receive commission. [www.northbrookfundraising.co.uk/templeewell](http://www.northbrookfundraising.co.uk/templeewell)

Covid-19 had a massive impact on our fundraising this year and we have lost in excess of £10,000. Between the Easter Fayre, fete, the 10k run, the school ball, not to mention the discos and film nights for the children. Hence we are trying to be creative and find new ways for everyone to support the school.

We feel privileged and truly appreciate being part of our wonderful village community and wish you all well as we continue to adapt to and live in this new situation.

**Angela Matthews**  
**Head Teacher**

There is now a defibrillator attached to the back of the Millennium Hall (Church side).

There are child and adult pads available.

This has been the work of some fundraising by the several members of staff, the PTFA, Waitrose and NFU. We have a plaque that will go next to it and at some point when safe to do so will have an official unveiling.



We were very excited to be invited to the new Co-op opening in Dover as the school is currently one of their community funds this year.

Two children from Sycamores class went down on one very rainy Friday morning and met volunteers from the RNLI and had a walk around the new shop. They were then lucky enough to be given two big tubs of chocolate to take back for their class mates and a hamper full of tea, coffee and biscuit goodies for the staff.

They may have got very wet but they had a good time!!

**Nicola Church**  
**School Business Manager**



Ben and Taufik of Temple Ewell School at the new  
Co-op Opening Ceremony

# MARK WALTON

**Tel: 01304 219886**

**Mobile: 07970 745272**

## BRICKWORK CONTRACTOR & BUILDER

- Re-pointing
- Driveways
- New buildings
- Block-paving
- Alterations & Conservatories
- Extensions
- Patios

Cranbrook, Dover Road, Guston

## Brabourne Gardening Services

Lawns mown | Edged | Dressed |  
Scarified

Hedges cut | Trees pruned |  
Shrubs tidied

Fencing and Patios

Weekly or Fortnightly Visits

One off clearances

Small removals undertaken

**Tel:**

**Dennis Brown 01304 829712**

**or**

**Tom Bradley 07979 756682**

**For Free no obligation estimate**



**Kearsney  
Property  
Services**

### ATTENTION LANDLORDS & PROPERTY OWNERS

Looking to rent out your property in the village?

We are always in need of good quality properties for  
our professional clients in the local area. We fully  
reference all applicants.

Thinking of buying a property as an investment?

Free advice given

For further information contact:

Karen Southon at

Kearsney Property Services

Property Management | Property Sourcing | Lettings

**Tel: 01304 825153**

**Email: [Office@kearsneypropertyservices.co.uk](mailto:Office@kearsneypropertyservices.co.uk)**



**E.J. Ditton & Co. Ltd**

### ELECTRICAL CONTRACTORS

All electrical work undertaken

Free, no-obligation quotations

Local business established for  
over 60 years

**[sales@ejditton.co.uk](mailto:sales@ejditton.co.uk)**

**01304 205141**



***Rediscover your smile***

Disillusioned with your loose dentures?  
Don't wait any longer for a quick and  
friendly solution. Have a free consultation  
now, you might be surprised.

- \* Fast service. Understanding with nervous patients
- \* New dentures, acrylics, chromes and flexible
- \* 1 hour repairs, Relines and additions
- \* CLOSED Saturdays — by appointment only
- \* Affordable dentures



**Richard Price \* Dip CDT RCS (eng) - Qualified Clinical Dental Technician (GDC no 231927)**

**Jamie Smith \* Dip CDT RCS (eng) - Qualified Clinical Dental Technician (GDC no 233252)**

**Call or visit our clinic T: 01304 205516 51 Castle Street, Dover CT16 1PT**

**Also at Herne Bay Dentures Ltd, T 01227 741712**

**HUSK**  
Service and MOT Centre

The Freight Terminal  
On the A2 at Lyden Hill  
Dover  
Kent  
CT15 7JW  
Tel: 01304 833 293



- Class 4,5 & 7 MOT's
- Express Oil Services
- Full Service
- Cars, Mini Buses & Light Commercial Vehicles
- Collection & Delivery service or Courtesy Cars available

Customer waiting area with free tea & coffee  
Friendly, reliable service at competitive prices



**SPECIAL OFFER 10% DISCOUNT**

**Open Monday to Friday 8.00am to 17.00pm | Saturday 8.00am to 13.00pm**  
**Email [workshop@huskuk.co.uk](mailto:workshop@huskuk.co.uk) | [www.dovermot.co.uk](http://www.dovermot.co.uk)**

## Putting His Foot Down!

I have subscribed to Home and Interior magazines for many years,  
much to Hubby's dismay.

He says they give me too many ideas,  
and for what he will have to pay!

But isn't that what the magazines are  
supposed to do?

Feed the mind to have a go  
at something we've never tried  
before?

Hubby says he never knows where he  
could be sitting next  
with the sofa going halfway out the  
door.



My hobby right now is embellishment, it's called.  
Changing the appearance of clothes with embroidery silk or wool.  
So he's worried his shirts and pullovers will slightly change their look,  
he should be grateful I don't unearth the Crochet hook.



He thinks he ought to get a  
wardrobe key,  
especially as now I'm watching  
The Great British Sewing Bee.  
He likes his ties to have a point,  
his shirts to have collars and cuffs.  
I heard him say, the other day,  
'enough is enough'.

© **Anne Cox**  
**May 2020**



## Major Arianne May Kidd MBE

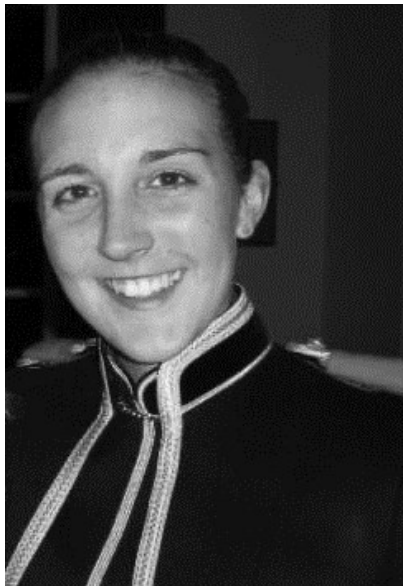
You may remember Arianne and her sister, Kirsty, formerly living in Lower Road, Temple Ewell. They both attended Temple Ewell Primary School before moving onto Dover College. Arianne then left Dover to study History at Liverpool University.

It was from there, having decided to explore a career in the Army, she was accepted into The Royal Military Academy Sandhurst where, once qualified as an Officer, she joined the Royal Logistic Corps.

Arianne has now been honoured in the Queen's Birthday Honours List 2020 with an MBE (Member of the Order of the British Empire).

She currently resides in Farnborough, Hampshire with her husband and two children.

**Jenny Olpin**



## Temple Ewell and District Produce Association

So sorry to say our AGM, planned for October is definitely cancelled, so other than to say we hope all our committee, members and friends are keeping well, staying safe and that next year will be better for everyone.

*Edie and Trevor*

**info@tedpa.club**



## Temple Ewell Nursing Home

Our aim is to provide high quality personalised nursing care to meet the needs of the individual whilst encouraging choice and independence in a friendly, relaxing and homely environment.

We are sensitive to our resident's requirements for privacy, confidentiality and personal dignity.

Home cooked fresh meals, regular activities and a full complement of highly trained nursing and care staff help us to maintain the best possible care and comfort for our residents.

Refurbishments to our home and improvements to our service are in process and ongoing.

If you or your loved one is considering the need for residential or nursing care, please feel free to contact us or come and visit us to see what we can offer.

We look forward to welcoming you to our home.



## Temple Ewell Nursing Home

Wellington Road, Temple Ewell, Dover, Kent, CT16 3DB

01304 822206 (Office) / 01304 822246 (Nurses) / 01304 822208 (Fax)

[www.temple-ewell.co.uk](http://www.temple-ewell.co.uk)

[admin@temple-ewell.co.uk](mailto:admin@temple-ewell.co.uk) / [gillian@temple-ewell.co.uk](mailto:gillian@temple-ewell.co.uk)

# *Tai Chi*

Relax and get fit!

Wednesday, 5.30 – 6.30pm  
Alkham Village Hall

For details of these and other classes  
Contact Anna Dashwood  
01304 205 405 / 07736 849 194  
[www.pfstaichi.com](http://www.pfstaichi.com)



This advertising  
space available

Contact Jeanette  
for details

**01304 826386**

[templeewellnews@gmail.com](mailto:templeewellnews@gmail.com)

## **Home Hairdressing Services**

**Call Sue on 07795 362812** *Fully insured*

Wet cut and blow dry £21

Ladies wet cut £15

Perms, colours and highlights  
from £24



All colours require a skin test  
before appointment.

Quality L'Oreal Majirel Colours  
NHF + City & Guilds Qualified

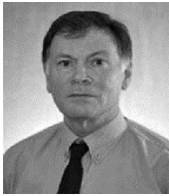
**Working hours are 9am - 2pm Monday to Friday School Term Times Only**



The roadside gang of Temple Ewell for the Kent Wildlife  
Trust started back on Tuesdays 9.30-3pm

To join us on our tasks call Bob Newington on 827138.  
We also have Sunday tasks once a month.

**New volunteers are welcome**



# County Councillor

## **Joint statement from KCC and Medway Council's Directors of Public Health, Andrew Scott-Clark and James Williams**

The government has launched three new levels of restrictions, applicable to the whole country from Wednesday onwards. While we recognise cases are rising across Kent and Medway, at this time, it would appear that Local Authorities in the South East will be classified in the Medium Tier. This is the lowest level possible. This means that residents and businesses in Kent and Medway will not be subject to further restrictions, than are currently in place for areas deemed Medium risk.

We will of course ensure that our outbreak management plans and any actions taken, now align with the Government's new instructions, and we welcome the publication of their published guidance to support the announcements made yesterday afternoon.

It is more important than ever that residents play their part to help protect themselves and others, particularly the most vulnerable members of the community who are most at risk from severe symptoms, and continue to follow the national guidelines.

We are continuing to work with our partners across Kent, including Public Health England local health protection teams and the NHS, to monitor where cases are occurring and whether there are larger widespread community outbreaks.

There is more testing available across the county and anyone experiencing Covid symptoms should self-isolate immediately and book a test. It is vital that the wider community in Kent continues to play its part and if you are contacted by the NHS Test and Trace service, then you should follow the guidance given to self-isolate.

We also appeal to people to remember social distancing, regular handwashing and wearing a mask in public places to help keep the number of cases as low as possible. You can now also download the NHS Test and Trace app.

For more information go to [www.kent.gov.uk/protectkent](http://www.kent.gov.uk/protectkent)

### **The national picture:**

The Prime Minister has set out how the government will further simplify and standardise local rules by introducing a three tiered system of local COVID Alert Levels in England.

He confirmed the levels will be set at **medium**, **high**, and **very high**.

The “medium” alert level - which will cover most of the country - will consist of the current national measures, which came into force on 25 September. This includes the Rule of Six, and the closure of hospitality at 10pm.

The “high” alert level will reflect many current local interventions, but there will now be consistency across the country.

The “very high” alert level will apply where transmission rates are causing the greatest concern, based on an assessment of all the available data and the local situation.

Non-essential retail, schools and universities will remain open in all levels.

A postcode checker on [gov.uk](https://www.gov.uk) will show which alert level applies in each area and the NHS COVID-19 app will also direct people to this information.

Regulations for all three local alert levels will be debated and voted on in the House of Commons tomorrow. Subject to that vote tomorrow, they will come into force on Wednesday, subject to the approval of Parliament.

The PM also confirmed that the government will also provide Local Authorities across England with around £1 billion of new financial support.

Full details on what the COVID Alert Levels contain are set out below.

### **Local COVID Alert Level - Medium**

This is for areas where national restrictions continue to be in place. This means:

- All businesses and venues can continue to operate, in a COVID-Secure manner, other than those that remain closed in law, such as nightclubs.
- Certain businesses selling food or drink on their premises are required to close between 10pm and 5am.
- Businesses and venues selling food for consumption off the premises can continue to do so after 10pm as long as this is through delivery service, click-and-collect or drive-thru.
- Schools, universities and places of worship remain open
- Weddings and funerals can go ahead with restrictions on the number of attendees
- Organised indoor sport and exercise classes can continue to take place, provided the Rule of Six is followed
- People must not meet in groups larger than 6, indoors or outdoors

### **Local COVID Alert Level - High**

- This is for areas with a higher level of infections. This means the following additional measures are in place:
- People must not meet with anybody outside their household or support bubble in any indoor setting, whether at home or in a public place
- People must not meet in a group of more than 6 outside, including in a garden or other space.
- People should aim to reduce the number of journeys they make where possible. If they need to travel, they should walk or cycle where possible, or to plan ahead and avoid busy times and routes on public transport.

### **Local COVID Alert Level - Very High**

This is for areas which are very high level of infections. The Government will set a baseline of measures for any area in this local alert level. Consultation with local authorities will determine additional measures.

The baseline means the below additional measures are in place:

- Pubs and bars must close, and can only remain open where they operate as if they were a restaurant - which means serving substantial meals, like a main lunchtime or evening meal. They may only serve alcohol as part of such a meal.
- Wedding receptions are not allowed
- People must not meet with anybody outside their household or support bubble in any indoor or outdoor setting, whether at home or in a public space. The Rule of Six applies in open public spaces like parks and beaches.
- People should try to avoid travelling outside the 'Very High' area they are in, or entering a 'Very High' area, other than for things like work, education, accessing youth services, to meet caring responsibilities or if they are in transit.
- People should avoid staying overnight in another part of the UK if they are resident in a 'Very High' area, or avoid staying overnight in a 'Very High' area if they are resident elsewhere.

***Geoffrey Lymer***

***Kent County Councillor Dover West Ward***



**Respectful, honest and caring dentistry from a long established private practice with the best of modern dental advances.**

Ages 0 -100 years old (and more) welcome!

"Not at all anxious" to "Been dreading this for years" absolutely welcome.

**Dr Dorothy Riley and her team  
look forward to welcoming you!**

**[www.doverpriorydental.com](http://www.doverpriorydental.com)**

**3 Priory Road, Dover, CT17 9RQ  
01304206558**

## Useful Telephone Numbers

Lydden Surgery	832160
NHS Out of hours medical service	111
Dover Health Centre	865500
Buckland Hospital	222510
Canterbury Hospital	01227 766877
William Harvey Hospital	01233 633331
Queen Elizabeth the Queen Mother Hospital	01843 225544
Dover District Council	821199
KCC Highways to report faults with roads/lights etc.	03000 418181
Citizens Advice Bureau	03448 487978
Dover Library	204241
Dover Leisure Centre	201145
Stagecoach Dover	08456 00 22 99
Tourist Information	205108
Dover Community Safety Unit	872220
Police Fire Ambulance - Emergencies	999
Police - to report a suspicious event	101
Police - to report a crime where the offenders have left	101
Social Services	03000 414141
Crimestoppers	0800 5551111
Gas Emergency	0800 111999
Electricity Emergency and Power Failure	0800 783 8866
Water Supply Emergency	0808 239 4130
Waste Water Emergency	0330 303 0368
Childline	0800 1111
The Samaritans	116 123
Post Office Customer Services	0845 7740 740
Dover Community Radio	744177
Age Concern      Maggie Paterson	207268

The Temple Ewell Newsletter is published monthly in the interest of greater unity within the community. It is distributed free of charge. Editorially it aims to be free from political, sectarian and institutional bias and seeking neither to be divisive nor controversial, it does not support or oppose any cause.

The appearance of an advertisement in this Newsletter does not mean that we endorse the advertiser's goods or services. While we will not knowingly run an advert that is untrue, The Newsletter is not responsible for the accuracy of any advertising material or the usefulness of an advertised product or service.