

tenews.co.uk

Temple Ewell Newsletter



Temple Ewell Organisations

Parish Council Chairman	Mr Glenn Mousley	824121
Clerk to the Parish Council	Mr Andrew Howard-Grigg	361774
Police Community Support Officer	Megan Keehner	07929 049947
District Councillor	Mark Rose	07733 080861
County Councillor	Geoffrey Lymer	07960 490929
T E School Head Teacher	Mrs A Matthews	822665
Friends of TE School (Sally Parker)	friendsoftheschool@hotmail.com	
Sunday Club	Mrs J Miles	824280
Friday Club	Yvonne Sacker	330017
Art Workshop	Antionette Tourret	826292
Age Concern	Mrs K Green	207268
Brownies	Mrs A Newington	827138
Community Coffee Mornings	Mrs J Miles	824280
WI	Jan Luckhurst	331051
Produce Association	Trevor Barlow	824787
Temple Ewell Players	Mr M Brodie	07766 228728
Men's Club	Mr A Ladbrook	824948
Village Hall Bookings/Enquiries	John Holness	448140
Youth Club	Marilyn Holness	448140
Tiddlers	Amanda Lomas	07506 811851
Branching Out	Marilyn	448140
	Trish	820966
Kent Wildlife Trust Conservation Tasks	Bob Newington	827138
Short Mat Bowls Club	Roy Parks	824618
Allotment Manager	Dominic Castle	07836 388458

St. Peter and St. Paul Temple Ewell

Church Warden - Mrs E Waller 824709 Dr Judith Shilling, 827692

PCC Secretary - Mrs C Roberts 822850

PCC Treasurer - Chris Tyler 07715 078882

Choir Master - R Christian 07920 057763

HOWEVER PLEASE NOTE:

For Weddings - Dr Judith Shilling, 827692

For Baptisms - Christine Roberts 822850

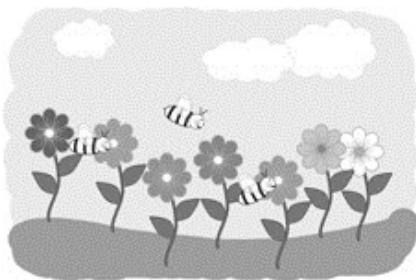
For Funerals - Liz Waller 824709

Baptist Church

Rev Ewart Graham on 375823 or John Woodland on 822982

Hello All

Yea, Spring is coming! The clocks go forward on 28th of this month, so lovely lighter evenings on their way, I can't wait! The long range forecast from The Met Office predicts that "It will perhaps become more generally settled throughout



the UK by the middle of March, with more prolonged dry spells, particularly in the south and east, with wetter conditions more likely to be confined to the northwest. Temperatures are expected to stay above average, with any cold interludes fairly brief." So doesn't sound too bad for us.

Next month we'll let you know exactly what's happening on 8th May to celebrate the 75th anniversary of VE Day. I can tell you it's going to be a lovely family day for all the village, so make sure you save the date.

It's Mother's Day on 22nd March, so I hope all you Mums have a lovely day.

Editor: Jeanette Potts

Email: templeewellnews@gmail.com Tel: 01304 826386

Address: 13 Chilton Way River CT17 0QB

We welcome all contributions to the content of the Newsletter, but please remember that the deadline date for the next issue is 8pm on the 15th of the preceding month. However, please note, there is no January or August issue of the Newsletter.

NOTE: You should be aware that articles are also published on the website www.tenews.co.uk - please inform us if you want any part of your article withheld from that particular medium.

A copy of every Newsletter is posted on the website, including the village diary. Make sure you log on to www.tenews.co.uk

Temple Ewell Newsletter Editorial Committee

Treasurer / Editor / Web	Jeanette Potts	826386
Chair / Distribution	Jenny Miles	824280
Vice Chair	Jenny Olpin	825011
Secretary	Ruth Horton	268998
Members	Cindy Tuson	823325
and Lisa Scrivens Waghorn		



Village Diary

March

- Thurs 12 Coffee Morning 10am in the Village Hall
W.I. Meeting 7pm in the Village Hall
- Thurs 26 Coffee Morning 10am in the Village Hall
- Sat 28 Produce Association Spring Show 2-4pm in the Village Hall
TENews QUIZ NIGHT 7.15 for 7.30pm in the Village Hall
- Tues 31 Parish Council Meeting 7.15pm in the Baptist Hall

April

- Sat 4 Easter Fair 2-4pm In the Village Hall - see page 11 for details
- Thurs 9 Coffee Morning 10am in the Village Hall
W.I. Meeting 7pm in the Village Hall
- Thurs 23 Coffee Morning 10am in the Village Hall
- Tues 28 Annual Parish Meeting 7.15pm in the Baptist Hall

May

- Thurs 7 Coffee Morning 10am in the Village Hall
- Fri 8 VE Day 75th Anniversary Celebrations - keep the date free
- Thur 14-Sat 16 T E Players May Production—The Vicar of Dibley
- Thurs 14 W.I. Meeting 7pm in the Baptist Hall (due to Players' production)
- Thurs 21 Coffee Morning 10am in the Village Hall
- Tues 26 Parish Council Annual Meeting 7.15pm in the Baptist Hall

June

- Thurs 4 Coffee Morning 10am in the Village Hall
- Thurs 11 W.I. Meeting 7pm in the Village Hall
- Thurs 18 Coffee Morning 10am in the Village Hall

July

- Thurs 2 Coffee Morning 10am in the Village Hall
- Thurs 9 W.I. Meeting 7pm in the Village Hall
- Thurs 16 Coffee Morning 10am in the Village Hall
- Sat 18 Produce Association Summer Show 2-4pm in the Village Hall
- Thurs 30 Coffee Morning 10am in the Village Hall

Aug

Thurs 13 Coffee Morning 10am in the Village Hall
Thurs 27 Coffee Morning 10am in the Village Hall
TBA W.I. Meeting 7pm the Village Hall

Sep

Sat 4 Produce Association Autumn Show 2-4pm in the Village Hall
Thurs 10 Coffee Morning 10am in the Village Hall
 W.I. Meeting 7pm in the Village Hall
Thurs 24 Coffee Morning 10am in the Village Hall
Weds 23-Sat26 T E Players September Production

Oct

Thurs 8 W.I. Meeting 7pm in the Village Hall
Fri 30 Produce Association AGM 7.30-9pm in the Village Hall

Nov

Thurs 5 Coffee Morning 10am in the Village Hall
Thurs 12 W.I. Meeting 7pm in the Village Hall
Thurs 19 Coffee Morning 10am in the Village Hall

Dec

Thurs 3 Coffee Morning 10am in the Village Hall
Thurs 10 W.I. Meeting 7pm the Village Hall
Thurs 17 Coffee Morning 10am in the Village Hall



Don't forget to let
us have your diary
dates



FRIDAY CLUB

We have had a busy month and have celebrated Pat's big 80 birthday and Mary Brown's birthday with an afternoon tea, which always goes down well.

On a sadder note Friday club have had a few issues in regard to the Village Hall and as a result, and by a 100% in favour vote, we have decided to vacate as from 28th February and will be relocating to the Baptist Church as from 20th March.

Friday Club has been hiring the hall since just after the war so this will be a new beginning.

Until next time, take care as we all look forward Spring.

Yvonne

SATURDAY 28th MARCH

7.15 for 7.30pm £5

**QUIZ
NIGHT**

In the Village Hall - Bring
your own drinks and nibbles

Tables of 6-8 or come on
your own and join a table

Call Jeanette 826386 or Jenny 825011 to book

In aid of Newsletter funds



BROWNIES

We made wind chimes with shells, by putting strings onto a plastic bottle which had holes and then put shells with holes in them on the string. We put the string through the hole in the lid and then took them home. *Lexie*

Year of the Rat—We had a sock and sewed around the edge, we stuffed the sock and pulled it together leaving a little gap and put a braided string in for a tail and pulled and tied it together. We cut holes in the face for ears, whiskers and nose and put pipe cleaners in these and we put blue-tack eyes onto them. It was really fun, we enjoyed making them. *Connie*



Scout Hut at River

Friday - Beavers 4-30 to 5-30pm

Tuesday - Cubs 6-30 to 8-30pm

Monday - Scouts 6-30 to 8-30pm

Temple Ewell Village Store & Post Office

Donna and Robert Febrer - 01304 827100

Daily Newspapers and Magazines

Weekly Newspapers - Dover Express, Kent Mercury and Kentish Gazette Canterbury)

We are expanding our range of magazines - let us know if you have any requests

Fresh baked rolls daily, milk, confectioneries, soft drinks, greetings cards, gift wrap and stationary

Dry cleaning - we are agents for Jilly's of Deal

Post Office: banking, phone top up, currency, and more

Off Licence and tobacco

Now serving Teas and Coffees, drink in or take away



Opening Hours:

Monday - Friday 9am - 5.30pm, except Wednesday 9am - 1.00pm,

Saturday 9am - 12.30pm

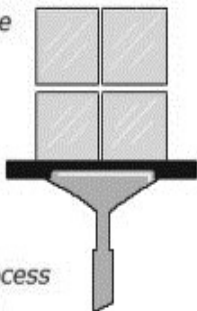
HiLo Window Cleaning

Water Fed Pole Specialist

Reliable Cost-effective Service

Fully Insured

*We use a 4 stage filtering process
providing 100% PURE WATER*



*Fully mobile technician
can reach any property
NO Parking = NO Problem!*

Call Steve on 07562 330234

D .J. Plumbing Services

ALL ASPECTS OF PLUMBING
WORK UNDERTAKEN

- ◆ Ball valves
- ◆ Taps to tanks
- ◆ City & guild Qualified
- ◆ All work Guaranteed
- ◆ All jobs covered
- ◆ Big or Small
- ◆ Free Quotes
- ◆ No Call Out Charge
- ◆ Friendly & Reliable



Call Dave

01034 362485 / 07971 421766

Email: djplumbing@googlemail.com

Office: 79 The Street, Sholden, Deal CT14 0AJ

CLEVERLEY & SPENCER

Monumental Masons
Est 1869

Member of
NAMM, NAMLC, SAIF(ass)
BRAMM and **RQMF** registered

**CONTACT US FOR
FRIENDLY, HELPFUL ADVICE**

All types of memorials supplied
and cleaned throughout Kent,
East Sussex and London

CONTACT:

5 Frith Road, Dover

01304 206379

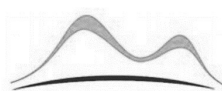
www.clevspen.co.uk

Dover Letting Agency

Home in on us for all your letting needs

- Tenant Find Only
- Fully Managed
- Reduced Commission on Property Transfers
- Guaranteed Rents & Legal Protection
- FREE Money Protection Insurance

01304 268101—www.doverlettingagency.co.uk
info@doverlettingagency.co.uk



2 Cherry Tree Avenue Dover Kent CT16 2NL



TEMPLE EWELL BAPTIST CHURCH

(Part of the Baptist family in Dover)

DO NOT EAT BLOOD!

There are some Bible directives that undoubtedly sound very strange to modern ears.

The old law in the book of Leviticus tells us not to eat blood. Why and does it apply to us? The reason for this direction appears to be to resolve a conflict between the sixth commandment, "Thou shalt not kill" and the permission given to eat certain types of animal. This process would inevitably result in the shedding of blood. It is, of course, inevitable that some blood is consumed when eating meat. The amount of blood was to be reduced to a minimum in order to remind the consumer that a life had been taken. To remember that life is sacred. Life is God given.

This theme runs through the whole of scripture as certainly as our own DNA is throughout our bodies. Life is precious! Life is worth hanging onto! Our own lives are of immense value! There is sanctity in life! God loves us and gave us LIFE.

Our other activities continue as usual:

Sunday Family Service: 10.30am

Monday Keep Fit: 7.30pm

Wednesday Bible Study and Prayer at 10.00am



Sunday 8th March at 4.00pm. All ages, craft activities. Our theme is "Feast of Faith". A meal is included and all is free of charge. All welcome.

If we can help in any way please do not hesitate to contact June on 822982, Jack on 825150 or our minister Ewart Graham on 375823. www.templeewellbaptistchurch.com



Temple Ewell and District Produce Association

Our Coffee Morning on Saturday 8th February was very well attended by members and friends with some new members joining for the first time. Thank you so much for supporting you local club, We are going from strength to strength and are getting close to the magic 100 members.

The Coach trip this year is to Leonardslea in East Sussex on Saturday 30th May. There are a few seats remaining. If you would like to come please ring Carol Buttifint on 830535 to book your seat and pay the deposit.

Our Spring Show is Saturday 28th March in Temple Ewell Village Hall. We look forward to seeing you all there.

Regards Trevor



EASTER FAIR

Saturday 4th April
2-4pm in the Village Hall

Hosted by Branching Out

There will be an Air Ambulance Table



Temple Ewell Parish Council

Temple Ewell Parish Council – February update

This month's Parish Council update is brought to you by Vice Chairman, Cllr. Mrs Kirsty Price and the Parish Clerk, Andy Howard-Grigg, as unfortunately Chairman, Glenn Mousley has recently been ill. We wish Glenn a speedy return to good health.

January's Parish Council Meeting was very well attended, with the main topic of interest being the Highways Improvement Plan which includes plans to improve crossing London Road, from Templeside to High Street, overcoming traffic issues on Lower Road, and making Brookside safer for children getting to and from School. The feedback gained from residents, particularly in relation to Lower Road, has been used to update the Kent Highways Team who are supporting our HIP. The next stage is for a traffic census, and it's hoped that this will take place towards the end of February.

Sadly, Channels & Choices (the new owners of Kearsney Manor) were unable to attend the meeting but have agreed to provide an update on their plans to the Annual Parish Meeting on 28 April.

Thanks to Temple Ewell Village Store & Post Office for hosting PCSO Megan Keener for her second Police Surgery. Megan's role is to reduce crime, fear and anti-social behaviour in the community by providing a visible and reassuring presence in the neighbourhood. Megan, who also covers a number of other Parishes in the District can provide crime prevention advice and support to victims of crime - fortunately we in Temple Ewell have a very low crime rate.

Thanks also to Bob Newington for his efforts in pruning the trees on the corner by the Baptist Church Hall. This area is now safer for pedestrians and the work enables a better view of oncoming traffic for those turning out of High Street into London Road.

Lastly, a thank you to those who have brought issues around the village to our attention, such as broken railings, river pollution, blocked Public Rights of Way, and not least the issues related to the housing development works in Lower Road (Guild Crest Homes have assured the Planning Enforcement Inspector that future deliveries and contractor parking will now be on site, the recent atrocious weather having prevented this). Please continue to use TempleEwellPC@Outlook.com to bring these issues to the fore; they can then be speedily reported to the relevant agencies in order to receive attention and keep Temple Ewell a great place to live.

Don't forget that our Facebook page (Temple Ewell Parish Council) is regularly updated with news from the village and events that may affect Parishioners.

On behalf of Glenn Mousley – Chairman of the Parish Council



The Trust has purchased the land on the Lydden side of the Reserve and has put fencing around some of the land.

Thank you to the Organisations and individuals around Temple Ewell and Lydden whose donations made this possible.

Temple Ewell Art Workshop

We meet in the Village Hall every Wednesday

during term time 2-4pm

New members are welcome

WESTCOURT FACILITIES MANAGEMENT



PROBATE & MOVING CLEANS

We are a local Facilities Management Company based in Kent and have been established for over 15 years. We offer Probate Cleans, Moving Cleans and End of Tenancy Cleans.

We clean everything from small Flats to Family Homes.

PLEASE CONTACT US FOR A FREE QUOTE

07508 868161

www.westcourtfacilities.co.uk - info@westcourtfacilities.co.uk



J.C GAS

Plumbing & Heating Engineer
Putting your needs first

J.C Gas is your local heating engineer, providing honest and impartial advice thus keeping your costs to a minimum.

J.C Gas takes pride in providing a fast and friendly service, working to the highest of standards.

Gas safe registered and fully insured

Gas appliance servicing, installation and repair

Central heating, Plumbing - Fast response

Dover, Deal, Folkestone and all surrounding areas

Tel: 07824 634924 Email: jason.jcgas@gmail.com www.jcgasservgices.co.uk



Guitar Tuition

Enhanced CRB Check

Phone Steve 07792 349022



The Haven Spa

MASSAGES, FACIALS, DERMAPLANING,
NON SURGICAL LIFTS, RADIO FREQUENCY,
WAXING, BODY SCULPTURING,
MICRODERMABRASION,
LED THERAPY, ULTRASOUND,
CHEMICAL PEELS AND MUCH MORE

Mode, Hair, Beauty & Spa
Coxhill, Shepherdswell, CT15 7NN
www.thehavenspa.org

07813 893148

FB & Insta @thehavenspaatmode



Young's Accountancy Services

Accountancy, Audit,
Book-keeping, Payroll &
VAT Services.

For small businesses
and sole traders.

Free initial consultation,
flexible hours.

Contact details:

M: 07561 112178

T: 01303 259734

E: contactyoungstoday@gmail.com



COURT BARN

FOOT CLINIC

Luisa Kelk - MCFHP MAFHP Dip FH

Registered Member of
The British Association of
Foot Health Professionals

- Nail Cutting
- Thickened Nails
- Corn and Callous Removal
- Ingrown Nail Removal
- Verruca Treatment
- Fungal Nail Treatment
- Diabetic Foot Care and Advice

To arrange a home visit, please contact

07527 660079

luisakelk@outlook.com

ROBERTS



PAINTING & DECORATING

Family Run Since 2013

Interior & Exterior Painting

Professional Finish

Free Colour Matching Service

10% Off With This Ad

info@robertspaint.co.uk

07824 357704

Free Estimates—Fully Insured- 2yr Guarantee



Parish Church of St Peter & St Paul

**March Services, to which we warmly welcome
you. At Temple Ewell our Sunday Club meets at**

**10.30am during term time – as advised. For details of our services please go to
www.facebook.com/templeewellpepaul**

1 st	10:30am, joint Holy Eucharist at Temple Ewell, Rev Canon Bob Coles
8 th	9:00am, joint Holy Eucharist at Lydden, Fr Peter Sherred
15 th	10:30am, joint Holy Eucharist at Temple Ewell, Fr Michael Morris
22 nd	9:00am, joint all age worship service for Mothering Sunday at Lydden, Fr Richard Woods
29 th BST starts	10:30am, joint Holy Eucharist at Temple Ewell, Rev Canon Bruce Hawkins

On February 16th we were delighted to announce to our congregations that we have appointed a new priest for the parish of Temple Ewell with Lydden. Rev Ian Parrish will join us as a part time priest, working 3 days plus Sunday, and we are very much looking forward to welcoming him to the area.

Ian joins us from his role as Priest-in-Charge at All Saints with St Philip, Maidstone and St Stephen, Tovil, where he played a very active role in the churches and the deanery. Prior to that, Ian served at St Paul's Maidstone as a training curate and Associate Priest. Before training to become a priest, Ian served in the Army Royal Engineers for 23 years. He is married to Frauke, and they have 2 adult sons.

Our interregnum has lasted just over two and a half years, and during that time we have seen a number of changes that we believe have made our churches stronger. The congregations of Temple Ewell and Lydden have worked together extremely closely and this led to us becoming a single parish in 2019. We've very much appreciated our visiting priests who have helped broaden our views and have supported us each week. Our PCCs and church wardens have taken on extra responsibilities during this time, and that has enabled them to help us identify our aims for the future of the two churches. These aims were reflected in our advertisement, and we feel that Ian is well equipped to take us on our new journey

Ian and Frauke won't be moving to Temple Ewell until May, so in the meantime we will do what all Christians do during the period of Lent – we will reflect and prepare before the celebrations of Ian's licensing. We will keep in touch with a date and arrangements for that and everyone will be invited.

This is a very exciting time for us, and we hope that you will also look forward to meeting Ian and Frauke.

Judith Shilling



Thank you for all your support over Christmas, belatedly, especially for the Christingle Service. We sent over £100 to the Children's Society.

We were overwhelmed with the kindness and generosity of the gifts to the women's refuge. There was so much we also sent toiletries to the Foodbank and a young person living in a hostel.

Jenny Miles



The Mangle Laundrette

21 Worthington Street, Dover Kent CT17 9AU
www.doverlaundrette.co.uk

For all your washing needs
All large items including duvets, blankets etc.

Ironing

PICK UP & DELIVERY SERVICE

(Normally same day)

APPOINTED AGENTS FOR JILLY'S DRY CLEANING

Call now on

01304 241235

07855385618



TEMPLE EWELL VILLAGE HALL

for all your functions

**To hire the hall
call John Holness
on 01304 448140**

Fencing & Garden Maintenance

Phone for a FREE Quotation

0771 999 88 54



Tony Wells

Professional Mole Catcher

Cost-effective traditional mole control

- No Mole - No Fee
- Free Survey
- Fully Insured

Tel: 01304 611090

Mobile: 07518 949587

Email: tonymolecatcher@gmail.com



TREE SURGERY
GARDEN MAINTENANCE

STUMP GRINDING
SERVICE

24 HOUR EMERGENCY CALL-OUT
Fully Insured
Free Quotes

NICK HENSON

01304 241400 / 07789 160092

nickhenson.nh@googlemail.com



LYDDEN LIFTS

Stairlift Enquiries:-

Mr J.V. Glass

Home: 01304 825534

Mobile: 07845 299 408

Office: 0800 016 9253

Email: lyddenlifts@hotmail.co.uk

Hillview, 70 Canterbury Rd, Lydden, Dover, Kent. CT15 7ES

YOUR LOCAL INDEPENDENT FAMILY OWNED FUNERAL SERVICE

SULLIVAN & SON

* Recommended by the Good Funeral Guide

* Recommended by the Natural Death Centre

* Funeral Contractor to Dover District Council

Instant estimate available here:

www.sullivanandson.co.uk

24 HOUR PERSONAL SERVICE:-

01304 201322

12 Beaconsfield Road, Dover, CT162LL





Temple Ewell Players

Thank you to everyone who came and supported our most recent show, Alice in Wonderland. We hope you all enjoyed yourselves as much as we did. The amount of work put into this show definitely paid off. I think the director deserves a round of applause.

If you didn't get a chance to see this show, don't fear! Another one is on its way – The Vicar of Dibley is our show in May! Further details will come regarding dates and ticket sales so keep up-to-date with this Newsletter to find out more!

If anyone is interested in joining Temple Ewell Players as a member of the cast or backstage crew, please contact us or pop down to the hall on a Tuesday or Thursday and find out more.

Thank you once again and we hope to see you soon!



The cast of Alice in Wonderland



Tweedledum and
Tweedledee put their
all into it and gave a
great performance

The White
Rabbit was
late as usual!



More pictures on page 24

The Lydden Bell



Available 7 days a week 12-2pm and 6-9pm

Sweet Chilli Baked Camembert with homebaked bread, chutney and grapes £6.95

Fried Whitebait with salad and tartare sauce £5.95

Cheesy Garlic Bread £2.95

Cheesy Chips £2.95

Ale Battered Haddock with handcut chips and peas £8.95

Chargrilled Homemade Burger with salad and handcut chips, Bacon and Brie, Plain or Stilton and Onion £8.95

Ploughmans Platter with mixed cheeses, ham, pickles, salad and homebaked bread £8.95

Wholetail Breaded Scampi with handcut chips and peas £8.95

Baby Back BBQ Ribs with Handcut chips, salad and coleslaw £8.95

Cumberland Sausages with Fried onion mash and peas £8.95

Roasted Vegetable Frittata with Side Salad £8.95

Call: '01304 830296' To place your Order



W. J. Farrier & Son Ltd

Independent Family Funeral Directors

Since 1948



PERSONAL 24-HOUR SERVICE
PRIVATE CHAPELS OF REST
TRADITIONAL, BESPOKE & ALTERNATIVE FUNERALS
CREMATIONS & BURIALS
ECO-FRIENDLY FUNERALS
HORSE DRAWN FUNERALS
INTERNATIONAL REPATRIATION

Golden Charter 
Smart Planning for Later Life

Pre-Paid Funeral Plans

Award Winners – 2007, 2009, 2010, 2011, 2013 & 2015

01304 201665

161 London Road
Dover, Kent
CT17 0TG



01303 245500

37 Bouverie Road West
Folkestone, Kent
CT20 2SZ

A personal service from your local Independent Family Funeral Directors

www.wjfarrierandson.co.uk

More from Alice in Wonderland



The Mad Hatter's Tea Party was a hilarious scene.

The Dame was great fun, but I thought I would spare you photos of her in her bikini!!



MARION MIDDLEBROOK

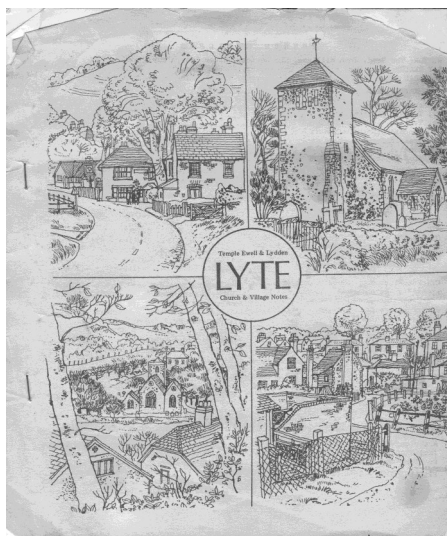
FORMER EDITOR OF LYTE MAGAZINE—the forerunner to this Newsletter

Violet Ethel Marion Middlebrook (known as Marion) was born on 9th February 1920 and has now reached the age of 100 years.

She was born and raised in Herne Bay in Kent and studied to become a teacher. She moved to Mid Kent near Maidstone, and then to Sturry where she continued to teach in spite of the school being bombed during WW2.

She eventually came to live at Ewell Minnis and became the Head Teacher at St. Bart's School in Dover.

She was always interested in drama and it was whilst she was performing at DODS that her future husband Middy came to watch her in a performance and decided that she was the one for him. After they married in 1967 she came to live in Temple Ewell at "Kirkdale". She became involved in the Church and was a Church Warden, a Server and Bell Ringer. She was instrumental in starting the Friday Club, Lenton Soup Lunches and became editor of the LYTE (Which stood for Lydden and Temple Ewell) Parish Magazine.



Her marriage ended in 1977 when her husband died on a London Station whilst waiting for a train home, after they had been to see a show.

Marion stayed at Temple Ewell and busied herself helping those whom she felt needed a bit of help. Her two closest friends were Julie Danson, and Les Brooks. She eventually decided after they had gone that she wished to be looked after in a home. She is at present in Riverlea Care Home in River.

She thoroughly enjoyed a recent tea party held to celebrate 100 not out and the card and letter from Queen were wonderful, although she didn't quite understand why she had received them.



R.C. McDONALD GENERAL BUILDERS



Your local Builder with over fifty years experience

Extensions, Renovations, Alterations and General Maintenance,
Roofing, Painting & Decorating

Tel: 01304 821139 or Mobile 07885 175683 for FREE Estimate



T.R.M. GROUNDWORKS & PENNOCK PLANT

DRIVES LANDSCAPING FENCING
AND
ALL GENERAL GROUNDWORKS

TELEPHONE 07850 298958 or 07860 501249



Lorna's Barber

Closed Mondays

Open all day Tues, Thurs, Fri

Wed 9am-12pm Sat 8.30am-3pm

Phone 07512 117730

2 High Street, Temple Ewell CT16 3DU

C D WOODWARD A.I.P.

PLUMBING & HEATING ENGINEER

Repairs, Maintenance, Installation & Gas Servicing
100 Canterbury Road, Lydden, Dover, Kent. CT15 7ET

Home/fax: 01304 831345

Mobile: 07850 579303



CALdesign

Charles A Lynch RIBA

**Chartered Architect - Temple Ewell
Design & Planning Service**



Free no obligation consultation

Discuss your ideas and explore some options

t: 01304 332 355 m: 0797 494 2364 charles@caldesign.co.uk

www.caldesign.co.uk

HarbouR

Print & Signs

auto graphics • signs • printing

t. 01304 208732

www.harbourprint.com



Community-Led Housing and Self-Build Mini Conference
Don't forget to book your free ticket for the forthcoming
mini conference!

Friday 20th March 2020

1pm till 5.30pm

DDC Offices, Whitfield CT16 3PJ

We will have expert speakers providing solutions and case studies to drive quality through design, build and maintenance of homes. They will be discussing how we can work towards achieving net carbon zero in new builds as well as discussing the efficiencies that can be made on existing homes. Smart technology solutions will also be discussed, highlighting the benefits of using new technology from saving energy to helping those in need.

We are looking to commence with a buffet lunch at 1pm for a 1.45pm start and will close the afternoon at 5.30pm. The event is free to attend but pre-booking is essential. To book your ticket please visit: <https://www.dover.gov.uk/Conferences>

Community-led Housing Forum

We launched our first community-led housing forum on Thursday 16th January 2020. The forum brought individuals and groups together to discuss their ideas, progress and aspirations. It provided a great opportunity to network with other likeminded individuals, groups and professionals and everyone found the forum beneficial. We discussed various themes surrounding community-led housing, and the group decided they would like to talk about funding at the next forum meeting in February. Any other topics raised will be used as key areas for discussion at the following session in March. The main aim of the forum is for people to meet and support one another to get their projects off the ground. Anyone who is interested or involved in community-led housing is very welcome to attend these informal get-togethers.

Upcoming Forum Session:
Thursday 26th March 2020

6.00pm to 7.30pm

DDC Offices, Whitfield, Dover CT16 3PJ

You do not need to book a ticket, just turn up on the evening and enjoy a good conversation over a cuppa with like minded people.

Contact

To find out further information on community-led housing please visit our dedicated webpage: www.dover.gov.uk/community-housing. Alternatively, if you have a question related to the Forum sessions please contact a member of the team on: communityhousing@dover.gov.uk



WOULD YOU LIKE TO ADVERTISE WITH US?

New advertisers welcome

Newsletter and website:

¼ page	£72.00
½ page	£140.00
Full page	£260.00

Pays for the whole year (10 issues x delivery to
approx. 750 households each issue)

One offs : ¼ page £15 ½ page £28 Full page £50

Website: tenews.co.uk Email : templeewellnews@gmail.com

Phone: 01304 826386

Local advertising really pays off!

MARK WALTON

Tel: 01304 219886

Mobile: 07970 745272

BRICKWORK CONTRACTOR & BUILDER

- Re-pointing
- Driveways
- New buildings
- Block-paving
- Alterations & Conservatories
- Extensions
- Patios

Cranbrook, Dover Road, Guston

Brabourne Gardening Services

Lawns mown | Edged | Dressed |
Scarified

Hedges cut | Trees pruned |
Shrubs tidied

Fencing and Patios

Weekly or Fortnightly Visits

One off clearances

Small removals undertaken

Call Dennis Brown

Tel: 01304 829712

For Free no obligation estimate



ATTENTION LANDLORDS & PROPERTY OWNERS

Looking to rent out your property in the village?
We are always in need of good quality properties for
our professional clients in the local area. We fully
reference all applicants.

Thinking of buying a property as an investment?

Free advice given

For further information contact:

Karen Southon at

Kearsney Property Services

Property Management | Property Sourcing | Lettings

Tel: 01304 825153

Email: Office@kearsneypropertyservices.co.uk



ELECTRICAL CONTRACTORS

All electrical work undertaken

Free, no-obligation quotations

Local business established for
over 60 years

sales@ejditton.co.uk

01304 205141



Rediscover your smile

Disillusioned with your loose dentures?
Don't wait any longer for a quick and
friendly solution. Have a free consultation
now, you might be surprised.

- * Fast service. Understanding with nervous patients
- * New dentures, acrylics, chromes and flexible
- * 1 hour repairs, Relines and additions
- * CLOSED Saturdays — by appointment only
- * Affordable dentures
- * Can't come to us? We can come to you.



Richard Price * Dip CDT RCS (eng) - Qualified Clinical Dental Technician (GDC no 231927)

Jamie Smith * Dip CDT RCS (eng) - Qualified Clinical Dental Technician (GDC no 233252)

Call or visit our clinic T: 01304 205516 51 Castle Street, Dover CT16 1PT

Also at Herne Bay Dentures Ltd, T 01227 741712

RIVER ART GROUP

We currently have vacancies in our Class that meets on

Tuesday mornings 9.30-11.30am term times

in River Village Hall (cost is £50 per term)

Our teacher is well known local artist, Penny Bearman

Call Jeanette on 01304 826386 for more info



**Temple Ewell
will be
celebrating in style**

Plans are already underway for the V E celebrations next May. The specially created Bank Holiday of 8th May promises to be a really special day for the village, so make sure you save the date! Lots of great ideas are currently being worked on and we will let you have full details as soon as possible.

As part of this special event, here at the Newsletter we would love to hear from anyone who has memories from V E day back in 1945 that they would like to share with our readers. We will print the stories in the May 2020 edition of the Newsletter.

Please get in touch and we will be delighted to visit you to take down your story - where were you, what were you doing at the time?

Please contact Jenny Olpin on 825011 / jenny.olpin@uwclub.net





Letters to the Editor

We would like to hear from you. What do you want information on? Need help with something? Want to comment on a local issue? This is the place to do it!

Send to the Editor — details on page 3.

Dear Editor

A review of Alice in Wonderland

This year's pantomime by the Temple Ewell Players did not disappoint. Alice in Wonderland was a fantasy world full of weird and wonderful characters. The Cheshire cat's wit, the eccentricity of the Mad Hatter, the Queen of Heart's sass, the dastardly knave of hearts, the exuberance of Tweedledum and Tweedledee and all the other cast members made it a show to remember.

I saw the show on opening night thinking this will be funny as this is when things go wrong and people forget their lines. It was funny but not because of the gaffs, it was genuinely funny. Maybe not so much for the chap who the Dame singled out! He was a good sport as was the Dame wearing that bikini!

The storyline was random in places even a bit trippy, a pleasant surprise for a village production. The choreography was on point, the scenery and costumes were excellent and the make-up superb. What I really liked was seeing a diverse group of people of all ages having fun together, now that's the stuff that brings and keeps communities together.

Congratulations to the director and Alice for providing the audience with a jolly good night out.

A.N. Audience Member



Temple Ewell Nursing Home

Our aim is to provide high quality personalised nursing care to meet the needs of the individual whilst encouraging choice and independence in a friendly, relaxing and homely environment.

We are sensitive to our resident's requirements for privacy, confidentiality and personal dignity.

Home cooked fresh meals, regular activities and a full complement of highly trained nursing and care staff help us to maintain the best possible care and comfort for our residents.

Refurbishments to our home and improvements to our service are in process and ongoing.

If you or your loved one is considering the need for residential or nursing care, please feel free to contact us or come and visit us to see what we can offer.

We look forward to welcoming you to our home.



Temple Ewell Nursing Home

Wellington Road, Temple Ewell, Dover, Kent, CT16 3DB

01304 822206 (Office) / 01304 822246 (Nurses) / 01304 822208 (Fax)

www.temple-ewell.co.uk

admin@temple-ewell.co.uk / gillian@temple-ewell.co.uk



**Domestic & Commercial
Cleaning Services**

- Weekly / Fortnightly / Monthly Cleans
- Professional, Fully Insured, Uniformed Staff,
Trained to a High Standard
- All Cleaning Materials and Equipment Provided

Office: 01304 275086

Mobile: 07542 624402

www.apexclean.uk apexcleanltd@gmail.com

SOUTH EAST ROOFING

*RELIABLE FAMILY BUSINESS OVER
30 YEARS EXPERIENCE*

NEW PITCHED & FLAT ROOFS
TUFF STUFF GRP INSTALLERS
REPAIRS-LEAD WORK
CHIMNEY STACKS
FASCIA, SOFFITS & GUTTERING

FREE INSPECTIONS/QUOTES

WWW.SEROOFINGKENT.CO.UK
SEROOFING@HOTMAIL.COM

01304 360555

077477 746407

Home Hairdressing Services

Call Sue on 07795 362812 *Fully insured*

Wet cut and blow dry £21

Ladies wet cut £15

Perms, colours and highlights
from £24



All colours require a skin test
before appointment.

Quality L'Oreal Majirel Colours
NHF + City & Guilds Qualified

Working hours are 9am - 2pm Monday to Friday School Term Times Only



Whitfield Computer Services

Lee Eversfield fdsc

Hardware & software problems • Installations • Upgrades
Repairs • Internet set-up • Virus removal • General advice

Tel: 01304 204227

E-Mail: lee.eversfield21@tiscali.co.uk

110 St Davids Avenue, Dover, Kent, CT17 9HN

NO FIX, NO FEE • SPECIAL RATES FOR SENIOR CITIZENS



County Councillor

Kent County Council reporting road defects

Kent Highways crews are finding and fixing potholes caused by the extensive rain over the last few weeks. As surveys of the condition of roads continue following Storm Ciara, Storm Dennis, at the time of writing, is expected to bring further wind and rain. Following the first storm, highways officers from Kent County Council dealt with over 500 enquiries to clear trees and remove surface water flooding.

Kent's roads have been saturated due to heavy rainfall since November and this has made the network extremely vulnerable to potholes. Highways crews have been scouring the county's 5,400 miles of road network ensuring dangerous potholes are filled immediately. Potholes not considered to be dangerous are placed into a programme and will be filled in within 28 days.

KCC highway manager Kirstie Williams said: "We prioritise potholes according to how unsafe they're making the road and so whilst not all potholes reported to us are a priority, we do aim to fix all that are identified. Dangerous faults that pose an immediate risk of causing an accident are fixed within two hours of being found or reported to us while hazardous faults which could deteriorate quickly to become dangerous are fixed within seven days. For emergency potholes we sometimes have to make an instant repair by quickly filling the hole to make the road safe but we schedule a full permanent repair to prevent potholes from forming in the future. We work hard to carry out the majority of our larger repairs during the summer when there is less rain, temperatures are more suitable for the materials we use and there is no salt present from winter gritting ensuring a longer lasting repair"

Kent County Council encourages residents that spot potholes to report them online via [Kent.gov.uk](https://kent.gov.uk) with 70% of pothole reports to KCC coming through this online fault reporting tool.

However, due to the potential danger of some potholes or road surface defect it is advised not to wait to report a pothole or road surface defect until your next parish council meeting and try to avoid reporting such defects to your parish clerk or Parish, District or County Councillor, but to report it direct on line to ensure KCC Highways receives your report within minutes and reduces any risk of errors as a result of information being passed on third hand.

Geoffrey Lymer Kent County Councillor



W.I.

At our February meeting Johnnie Kerney gave an amusing and informative talk about an iconography course she had attended at Ringwoud Church in July last year. She told us that she had always been interested in iconography so when the opportunity arose she jumped at the chance of learning something of the history and method of icon writing. In the Orthodox Christian tradition icons are said to be written and not painted because the Orthodox Church considers the making of icons a form of prayer.

She gave us a brief history of icons and then took us through the various steps of the 5 day course. The image was applied to a gesso covered board using gold leaf and paint pigments mixed with egg tempura (which is egg yolk mixed with white wine or vodka). The class worked from templates that the teacher had prepared. Johnnie said she found the experience intense but quite spiritual. At the end of the course the vicar had conducted a short service of blessing the icons. Johnnie finished her talk by showing us her finished icon of the Archangel Gabriel.

Jenny Olpin came along to ask if any members had memories or memorabilia of VE day that she could use in the 75th anniversary celebrations later in the year.



A Teenage Strop

It's just not fair, why can't I have a boyfriend too?
Like all my friends do?
What d'you mean, how do I know that they aren't telling me fibs?
Do people do that?

It's just not fair, why can't I put make-up on?
Dye my hair, even cut it short?
What d'you mean by asking me if I smoke cigarettes or other
things?
Don't people do the other things?

What do you mean, I'm too young to try many things?
That I need to pass my exams first and
that there's plenty of time yet to do all the things I've just
shouted, screamed and stamped my foot about?

What do you mean by saying I'm only fourteen?
Why do you always say that?





Respectful, honest and caring dentistry from a long established private practice with the best of modern dental advances.

Ages 0 -100 years old (and more) welcome!

"Not at all anxious" to "Been dreading this for years" absolutely welcome.

**Dr Dorothy Riley and her team
look forward to welcoming you!**

www.doverpriorydental.com

**3 Priory Road, Dover, CT17 9RQ
01304206558**

Useful Telephone Numbers

Lydden Surgery	832160
NHS Out of hours medical service	111
Dover Health Centre	865500
Buckland Hospital	222510
Canterbury Hospital	01227 766877
William Harvey Hospital	01233 633331
Queen Elizabeth the Queen Mother Hospital	01843 225544
Dover District Council	821199
KCC Highways to report faults with roads/lights etc	03000 418181
Citizens Advice Bureau	03448 487978
Dover Library	204241
Dover Leisure Centre	201145
Stagecoach Dover	08456 00 22 99
Tourist Information	205108
Dover Community Safety Unit	872220
Police Fire Ambulance - Emergencies	999
Police - to report a suspicious event	101
Police - to report a crime where the offenders have left	101
Social Services	03000 414141
Crimestoppers	0800 5551111
Gas Emergency	0800 111999
Electricity Emergency and Power Failure	0800 783 8866
Water Supply Emergency	0845 888 5 888
Waste Water Emergency	0845 278 0845
Childline	0800 1111
The Samaritans	116 123
Post Office Customer Services	0845 7740 740
Dover Community Radio	744177

The Temple Ewell Newsletter is published monthly in the interest of greater unity within the community. It is distributed free of charge. Editorially it aims to be free from political, sectarian and institutional bias and seeking neither to be divisive nor controversial, it does not support or oppose any cause.

The appearance of an advertisement in this Newsletter does not mean that we endorse the advertiser's goods or services. While we will not knowingly run an advert that is untrue, The Newsletter is not responsible for the accuracy of any advertising material or the usefulness of an advertised product or service.

PRINTED BY: HARBOUR PRINT 01304 208732