

tenews.co.uk

Temple Ewell Newsletter



Temple Ewell Organisations

Parish Council Chairman	Mr Glen Mousely
Clerk to the Parish Council	Mr Andrew Howard-Grigg 361774
District Councillor	Mark Rose 07733 080861
County Councillor	Geoffrey Lymer 07960 490929
T E School Head Teacher	Mrs A Matthews 822665
Friends of TE School (Sec - Trudy Adams)	friendsoftheschool@hotmail.com
Sunday Club	Mrs J Miles 824280
Friday Club	Yvonne Sacker 330017
Art Workshop	Antionette Turret 826292
Age Concern	Mrs K Green 207268
Brownies	Mrs A Newington 827138
Community Coffee Mornings	Mrs J Miles 824280
WI	Jan Luckhurst 331051
Produce Association	Trevor Barlow 824787
Temple Ewell Players	Mr M Brodie 07766 228728
Men's Club	Mr A Ladbrook 824948
Village Hall Bookings/Enquiries	John Holness 448140
Youth Club	Marilyn Holness 448140
Tiddlers	Amanda Lomas 07506 811851
Branching Out	Marilyn 448140
	Trish 820966
Kent Wildlife Trust Conservation Tasks	Bob Newington 827138
Short Mat Bowls Club	Roy Parks 824618
Allotment Manager	Dominic Castle 07836 388458

St. Peter and St. Paul Temple Ewell

Church Warden - Mrs E Waller 824709 Dr Judith Shilling, 827692

PCC Secretary - Mrs C Roberts 822850

PCC Treasurer - Chris Tyler 07715 078882

Choir Master - R Christian 07920 057763

HOWEVER PLEASE NOTE:

For Weddings - Dr Judith Shilling, 827692

For Baptisms - Christine Roberts 822850

For Funerals - Liz Waller 824709

Baptist Church

Rev Ewart Graham on 375823 or John Woodland on 822982

Temple Ewell Newsletter Editorial Committee

Treasurer / Editor / Web	Jeanette Potts	826386
Chair / Distribution	Jenny Miles	824280
Secretary	Jenny Olpin	825011
Members	Ruth Horton 268998 and Cindy Tuson 823325	

Hello All

It's that time of year when our advertisers are being asked to renew their adverts for another year. To those of you who are continuing with us, a BIG thank you - we couldn't produce this Newsletter without you.



I'd like to ask all our readers to use the advertisers' services, wherever possible, as they are all local businesses which need our support.

There's lots going on in the village in September, so don't forget to check the diary pages, and if you are organising something for the coming months let me know so I can add it.

Hope to see you at our AGM (see below), including anyone who fancies joining our committee!

TENews

**Our AGM is on Tues 1st October 7-9pm
in the Lower Village Hall**

ALL ARE WELCOME TO ATTEND - WE'D LOVE TO SEE YOU THERE

Editor: Jeanette Potts

Email: templeewellnews@gmail.com Tel: 01304 826386

Address: 13 Chilton Way River CT17 0QB

We welcome all contributions to the content of the Newsletter, but please remember that the deadline date for the next issue is 8pm on the 15th of the month.

NOTE: You should be aware that articles are also published on the website www.tenews.co.uk - please inform us if you want any part of your article withheld from that particular medium.

A copy of every Newsletter is posted on the website, including the village diary. Make sure you log on to www.tenews.co.uk

tenews.co.uk
Temple Ewell Newsletter



Village Diary

September

Sat 1 & Sun 2	Flower Festival in the Church
Thurs 5	Coffee Morning in the Village Hall
Sat 7	Produce Association Autumn Show 2-4pm in the Village Hall
	W.I. Meeting in the Village Hall
Sun 8	Annual Footpaths Walk 1-3pm - see ad page 17
Sat 14	Ride and Stride for Kent Churches - see ad page 17
Thurs 19	Coffee Morning in the Village Hall
Sat 21	Summer Supper & Musical Recital - see ad page 17
Tues 24	Parish Council Meeting 7.15pm in the Baptist Hall

October

Tues 1	Newsletter AGM 7-9pm in Lower Hall - ALL WELCOME
Thurs 3	Coffee Morning in the Village Hall
	W.I. Meeting in the Village Hall
Sun 13	The DFDS Temple Ewell 10K Run - see ad page 14
Thurs 17	Coffee Morning in the Village Hall
Sat 19	W I Quiz in the Village Hall - see ad page 26
Tues 29	Parish Council Meeting 7.15pm in the Baptist Hall
Tues 29	Produce Association AGM 7.30-9pm in the Lower Village Hall
Thurs 31	Coffee Morning in the Village Hall

November

Thurs 14	Coffee Morning in the Village Hall
Thurs 14	W.I. Meeting in the Village Hall
Tues 26	Parish Council Meeting 7.15pm in the Baptist Hall
Thurs 28	Coffee Morning in the Village Hall

December

Sun 1	Christmas Lights Switch On at Players' Corner
Thurs 12	Coffee Morning in the Village Hall
Thurs 12	W.I. Meeting in the Village Hall
Weds 25	CHRISTMAS DAY
Thurs 26	BOXING DAY

January 2020

Thurs 9
Tues 28

W.I. Meeting in the Village Hall
Parish Council Meeting 7.15pm in the Baptist Hall

February

Thurs 13
Tues 25

W.I. Meeting in the Village Hall
Parish Council Meeting 7.15pm in the Baptist Hall

March

Thurs 12
Tues 31

W.I. Meeting in the Village Hall
Parish Council Meeting 7.15pm in the Baptist Hall

April

Thurs 9
Tues 28

W.I. Meeting in the Village Hall
Annual Parish Meeting 7.15pm in the Baptist Hall

May

Fri 8
Thurs 14
Tues 26

VE Day 75th Anniversary Celebrations
W.I. Meeting in the Village Hall
Parish Council Annual Meeting 7.15pm in the Baptist Hall

June

Thurs 11

W.I. Meeting in the Village Hall

July

Thurs 9

W.I. Meeting in the Village Hall

Aug

TBA

W.I. Meeting in the Village Hall

Sep

Thurs 10

W.I. Meeting in the Village Hall

Oct

Thurs 8

W.I. Meeting in the Village Hall

Nov

Thurs 12

W.I. Meeting in the Village Hall

Dec

Thurs 10

W.I. Meeting in the Village Hall



Temple Ewell Players

As most of you will know by now, we had to change the plans for our proposed September production 'A Night at the Movies' due to unforeseen circumstances.

However on the 5th September we will be having a get together to find out all about our 2020 pantomime 'Alice in Wonderland' which will be directed by Sophie Gilham. If you've ever considered getting involved with the Players then now would be a great time to do so. The meeting will be in the village hall at 7:30pm.

Please come along, we're a friendly lot and love to see new faces.

Mike Brodie

GUESS THE SHOW!

These pictures are from one of our old shows - did you see it? Do you remember when and what it was? The answers are on page 37.





Temple Ewell Village Store & Post Office

Donna and Robert Febrer - 01304 827100

Daily & weekly, newspapers & magazines.

Fresh baked rolls daily, milk, confectioneries, soft drinks, greetings cards, gift wrap & stationary.

Dry cleaning: we are agents for Jillys of Deal.

Post Office: mails, banking, phone top up, currency & more.

Off Licence and tobacco.

Korkers sausages sold here.

Teas & Coffees, drink in or take away.



Opening Hours:

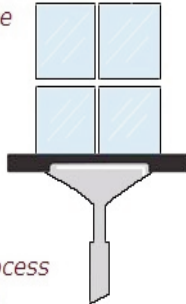
Monday - Friday 9am - 5.30pm, except Wednesday 9am - 1.00pm,

Saturday 9am - 12.30pm

HiLo Window Cleaning

Water Fed Pole Specialist

Reliable Cost-effective Service



Fully Insured

*We use a 4 stage filtering process
providing 100% PURE WATER*

*Fully mobile technician
can reach any property
NO Parking = NO Problem!*

Call Steve on 07562 330234

D. J. Plumbing Services

ALL ASPECTS OF PLUMBING
WORK UNDERTAKEN

- Ball valves to Bathrooms
- Taps to Tanks
- City & Guilds Qualified
- All Work Guaranteed
- All Jobs Covered
Big or Small
- Free Quotes
- No Call Out Charge
- Friendly & Reliable



Call Dave

01304 362485

07971 421766

Email: djplumbing123@Googlemail.com

Office: 79 The Street, Sholden, Deal CT14 0AJ

CLEVERLEY & SPENCER

Monumental Masons
Est 1869

Member of

NAMM, NAMLC, SAIF(ass)
BRAMM and RQMF registered

**CONTACT US FOR
FRIENDLY, HELPFUL ADVICE**
All types of memorials supplied
and cleaned throughout Kent,
East Sussex and London

CONTACT:

5 Frith Road, Dover
01304 206379

www.clevspen.co.uk

Dover Letting Agency

Home in on us for all your letting needs

- Tenant Find Only
- Fully Managed
- Reduced Commission on Property Transfers
- Guaranteed Rents & Legal Protection
- FREE Client Money Protection Insurance

01304 268101 - www.doverlettingagency.co.uk

info@doverlettingagency.co.uk



2 Cherry Tree Avenue Dover Kent CT16 2NL



Parish Church of St Peter & St Paul

September Services, to which we warmly welcome you

At Temple Ewell our Sunday Club meets at 10.30am during term time – as advised.

For details of our services please go to www.facebook.com/templeewellpepaul

Sept 1st	10.30am Holy Eucharist - Fr Michael Morris
Sept 8th	10.30 am joint Holy Eucharist at Temple Ewell– Fr Michael Morris
Sept 15th	10.00am joint Holy Eucharist at Lydden with Bishop Norman and Fr Richard. The service at Lydden will celebrate the feast day of their Patron Mary, and the confirmation of two children from Sunday club.
Sept 22nd	10.30 am joint Holy Eucharist at Temple Ewell – Fr Richard Woods
Sept 29th	9.00am joint Holy Eucharist at Lydden - Fr Richard Woods

Since Temple Ewell village has a strong community identity, many of you will have heard of the desperately sudden and tragic death of Josh Harber, an eight year old pupil at Temple Ewell school. It is perhaps the biggest dread that any of us as parents has to face. It often prompts questions such as, “How could God let this happen?” There are no slick answers. The children in school and especially in his class are having to come to terms with the fact they will no longer see him, and it will take a lot of time for such sorrow and loss to start to heal. Josh was a very energetic pupil with a strong sense of humour, as well as a passion for football. The school made the decision to continue with their annual sports day which took place just a few days after Josh’s death. It gave the opportunity for parents to talk and share and grieve and underlined Josh’s passion for sport. The most moving moment came when, following the usual father’s race, the mothers in unity walked silently as a huge group down the race track in honour of Josh. There was a special assembly to think about Josh in school for staff and children and a very reflective service in church for older children, staff and parents. Such an overwhelming situation does create the need to stand back from the daily demands of life. Life for families with children feels exceedingly hectic today and when we pause perhaps we realise how much is taken for granted that tomorrow will always be the same as today. Please feel welcome to find in the church the space, the peace and provision for reflection, question and prayer, where the love of God is close and can give you strength.

Who Is the Greatest? At that time the disciples came to Jesus, saying, “Who is the greatest in the kingdom of heaven?” 2 And calling to him a child, he put him in the midst of them 3 and said, “Truly, I say to you, unless you turn and become like children, you will never enter the kingdom of heaven. 4 Whoever humbles himself like this child is the greatest in the kingdom of heaven. Matthew 18. 1-4

It is with great pleasure we can let you know that two members of Sunday Club will

be exploring their beliefs and questions of faith as preparation for their Confirmation in Canterbury Cathedral in September. This confirms the promises made at their baptisms, as part of their lifetime journey of faith. The Bishop will lay hands on their heads asking God's holy spirit to give strength and commitment to live God's way throughout their lives. The following day, they will then receive their first communion in Lydden Church with Bishop Norman. It is a real moment of celebration.

The Churches of Temple Ewell & Lydden have joined to become a single parish, instead of a Benefice, although both remain as parish churches. This means there is now one Parochial Church Council and although our finances will be joined, any restricted funds such as for the care of the fabric of the church remain distinct. The interregnum has caused us to enjoy a greater number of joint services together which we all find very rewarding and there feels a strength in our working and worshipping together. We are planning to re-advertise for a priest for both churches in September and there is much prayer that this time we will be able to interview and appoint someone who will lead us in growing the churches within our communities. We will still be holding our annual Gift Day for Temple Ewell Church; this will be on Saturday October 12th. An update about the church bell and other matters will be given in the Gift Day letter.

Finally, looking back to our summer, on July 28th congregations from both churches visited the Fox in Temple Ewell for a thank you lunch for priests who have given us such loyal and helpful support during this second year of the interregnum. It was a very relaxed and enjoyable meal and grateful thanks must go to Alison and Steve for a superb meal and their hospitality.

Liz Waller

FLOWER FESTIVAL 'FLOWERS THROUGH THE AGES'

If you receive the Newsletter in time, - Still on

Sunday 1st September 12 – 4pm



Sunday Club

We will start again for the autumn term on Sunday 8th September.

On Saturday September 14th a few of us will be at Canterbury Cathedral to support Isabella and Christopher during their confirmation by the Archbishop of Canterbury. On Sunday 15th September we will all go to Lydden when the two young people receive communion for the first time from Bishop Norman.

We look forward to a good Autumn term and thanks to all the lovely people who help every Sunday in turns to provide a variety of presentations.



Plumbing & Heating Engineer
Putting your needs first

J.C Gas is your local heating engineer, providing honest and impartial advice thus keeping your costs to a minimum.
J.C Gas takes pride in providing a fast and friendly service, working to the highest of standards.

Gas safe registered and fully insured
Gas appliance servicing, installation and repair
Central heating, Plumbing - Fast response
Dover, Deal, Folkestone and all surrounding areas

Tel: 07824 634924 Email: Jason.jcgas@gmail.com www.jcgasservices.co.uk



Guitar Tuition

Enhanced CRB Check

Phone Steve 07792 349022

HarbouR
.....
Print & Signs

auto graphics • signs • printing

t. 01304 208732

www.harbourprint.com

ABBEY FARM HOLIDAYS

Beautifully converted self catering barns, ideal for visiting family & friends.
Comfortably and extremely well equipped with wood burners, wi-fi and dogs are welcome too. Accommodating up to 10 people and only 1 mile from River.

For more information contact Sue Moynan

ST RADIGUNDS ABBEY FARM DOVER CT15 7DL

Tel 01304 825963

email sue@abbeyfarmholidays.co.uk

www.abbeyfarmholidays.co.uk



R.C. McDONALD

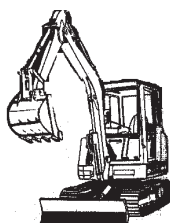
GENERAL BUILDERS



Your local Builder with over fifty years experience

**Extensions, Renovations, Alterations and General Maintenance,
Roofing, Painting & Decorating**

Tel: 01304 821139 or Mobile 07885 175683 for FREE Estimate



T.R.M. GROUNDWORKS

&

PENNOCK PLANT

**DRIVES LANDSCAPING FENCING
AND
ALL GENERAL GROUNDWORKS**

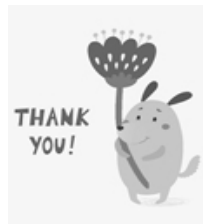
TELEPHONE 07850 298958 or 07860 501249

Our sincere thanks go to the following businesses, who very kindly donated prizes for the raffle held on the Family Fun Day in aid of Newsletter funds. We raised a total of £145.

From our Newsletter Advertisers:

Dover Letting Agency - M & S voucher

Lydden Bell - Sunday lunch voucher



From other businesses:

DFDS - voucher

Leas Cliff Hall - voucher

Blades Hairdressers - voucher

Philip Edwards Hair Salon - voucher

Morrisons - garden game

Bay Trust - bird box

THANK YOU ALL SO MUCH!



THE DFDS TEMPLE EWELL 10K RUN

KEARSNEY ABBEY, ALKHAM ROAD, DOVER, KENT, CT16 3EE

SUNDAY 13 OCTOBER 2019

TEMPLE EWELL PRIMARY SCHOOL



IN ASSOCIATION WITH
INVICTA EAST KENT AC



ENTER ONLINE AT
WWW.TEMPLEEWELL10K.CO.UK

RACE STARTS 10AM

MEDALS FOR ALL FINISHERS
INDIVIDUAL PRIZES
CHIP TIMING
UNIQUE COURSE
REFRESHMENTS

CLOSING DATE FOR ENTRIES
THUR 10 OCT



Friday Club

Hi everyone, I hope you have all enjoyed your summer holidays. We have been so lucky with the weather so far, although at the time of writing it is wet but still very humid.

On 12th July we took a coach trip to Hastings, and what a lovely day we had. The sun shone, our fish and chip lunches were tasty and a few of us had a little tippie (no names mentioned).

We are due back to Club on 6th September, when we shall start planning for our Christmas festivities.

Until then I'll sign off and look forward to seeing everyone and hearing of your holiday tales.

Until next time
Yvonne



T E Produce Association

We had our Summer Show on Saturday the 20th July in the Village Hall. It was a lovely sunny day and that brought the people out to the Village Hall to see the beautiful flowers and vegetables that our members had on display. A good afternoon was enjoyed by all.

Our next event is the Autumn Show on Saturday September the 7th at 2-4pm in the Village Hall. That just leaves the A.G.M. in the Lower Hall on Tuesday 29th October at 7.30pm. Please try and come to this meeting as it's important to the running of the club as we need volunteers to be a Minutes Secretary and a Committee Member.

The Alkham Valley Garden Centre has afforded our members a 10% loyalty card to use when shopping with them. I will have some on my sales table at the show on the 7th.

Regards
Trevor



Debbies

**Ladies Mobile Hairdresser
Price List**

Cut - £10 /OAP £8

Cut & Blow Wave - £18 /OAP £16

Cut Shampoo & Set - £16 / OAP £14

Shampoo & Set - £8 / OAP £6

Perm - £20 - £25

Own Colour & Blow Wave £18 / OAP £16

Own Colour, Cut & Blow Wave - £22 / OAP £20

**Please call and arrange an appointment
07783 221307**

Young's Accountancy Services

**Accountancy, Audit,
Book-keeping, Payroll &
VAT Services.**

**For small businesses
and sole traders.**

**Free initial consultation,
flexible hours.**

Contact details:

M: 07561 112178

T: 01303 259734

E: contactyoungstoday@gmail.com



FOOT CLINIC

Luisa Kelk - MCFHP MAFHP Dip FH



MEMBER OF
THE SMAE INSTITUTE

Registered Member of
The British Association of
Foot Health Professionals

- **Nail Cutting**
- **Thickened Nails**
- **Corn and Callous Removal**
- **Ingrown Nail Removal**
- **Verruca Treatment**
- **Fungal Nail Treatment**
- **Diabetic Foot Care and Advice**

To arrange a home visit, please contact:

07527 660 079

Luisakelk@outlook.com

ROBERTS

PAINTING & DECORATING

Family Run Since 2013

**Interior & Exterior Painting
Professional Finish
Free Colour Matching Service
10% Off With This Ad**

info@robertspaint.co.uk

07824 357704

Free Estimates ~ Fully Insured ~ 2 Year Guarantee



ANNUAL VILLAGE FOOTPATHS WALK

Sunday 8th September 1 – 3pm

Meet outside Lower Village Hall,
London Road end of Templar Road



Choice of 2 walks - Refreshments back at the Hall afterwards

Ride & Stride for Kent Churches

Saturday 14th September 10am – 6pm

Anyone can take part in this event by cycling or walking between local churches and getting sponsored for the number of churches visited. All the money raised goes towards keeping our churches in good condition for future generations.

For more information contact
Betty Pilcher on 01304 330706



Summer Supper and Musical Recital

SATURDAY 21st SEPTEMBER

at WOODVILLE HALL 6.30pm

Tickets £20 each to include canapés and buffet supper

For tickets please contact
Alison on 824152 or Pamela 825256
Numbers strictly limited

All profits to St Peter & St Paul Church



TEMPLE EWELL VILLAGE HALL

for all your functions

To hire the hall
call John Holness
on 01304 448140

Fencing & Garden Maintenance

Phone for a FREE Quotation

0771 999 88 54

The Mangle Laundrette

21 Worthington Street, Dover Kent CT17 9AU

www.doverlaundrette.co.uk

For all your washing needs

All large items including duvets, blankets etc.

Ironing

PICK UP & DELIVERY SERVICE

(Normally same day)

APPOINTED AGENTS FOR JILLY'S DRY CLEANING

Call now on

01304 241235

07855385618

T. PETTMAN

Clockmaker
Horology Repairs
Specialist in Antique
Clock & Barometer
Restoration

01843 825050
mobile 07860 498963

SPITFIRE



TREE SURGERY
GARDEN MAINTENANCE
STUMP GRINDING
SERVICE

24 HOUR EMERGENCY CALL-OUT
Fully Insured
Free Quotes

NICK HENSON
01304 241400 / 07789 160092
nickhenson.nh@googlemail.com



LYDDEN LIFTS

Stairlift Enquiries:-

Mr J.V. Glass
Home: 01304 825534
Mobile: 07845 299 408
Office: 0800 016 9253
Email: lyddenlifts@hotmail.co.uk

Hillview, 70 Canterbury Rd, Lydden, Dover, Kent. CT15 7ES

YOUR LOCAL INDEPENDENT FAMILY OWNED FUNERAL SERVICE

SULLIVAN & SON

- * Recommended by the Good Funeral Guide
- * Recommended by the Natural Death Centre
- * Funeral Contractor to Dover District Council

Instant estimate available here:

www.sullivanandson.co.uk

24 HOUR PERSONAL SERVICE:-

01304 201322

12 Beaconsfield Road, Dover, CT162LL





Temple Ewell Baptist Church

(Part of the Baptist Family in Dover)

RUNNING ON EMPTY?

It is a wonderful privilege to have a young grand-child who brings great joy. It also makes you address the realities of life. One is that you are getting older, and the second is that your energy level is reducing faster than you imagined. The more active the child becomes, the greater the contrast.

Our resource are not limited to physical strength but involve mind and spirit as well. Throughout life there are occasions when we feel that our resources are inadequate. The fuel gauge indicates that we need refilling. If we carry on as we are then it will not be long before we have to get out and push. We usually voice this situation with phrases like "I have had enough!". "I can't cope any longer!". "I have given all I have got!". "I have reached the end of my tether".

Refuelling is always necessary, at some point, if we are to continue on our journey. Our spirit is very much part of this process and we need input from other resources. God is well aware of our situation and has told us of what's on offer. In the Old Testament, Isaiah chapter 58 says "He (God) will satisfy YOUR need." The New Testament has exactly the same message in Philippians chapter 4 which reads "My God will supply all YOUR needs according to his glorious riches in Christ Jesus."

Thank goodness for the service station!

Our activities continue as usual:

Sunday Family Service: 10.30am

Monday Keep Fit: 7.30pm

Wednesday Bible Study and Prayer at 10.00am at 7pm



8th September at 4.00pm. All ages, craft activities, Bible story and a meal, all free of charge. All welcome.

***If we can help in any way please do not hesitate to contact June on 822982
Jack on 825150 or our minister Ewart Graham on 375823.***

www.temple-ewell-baptist.co.uk

WESTCOURT FACILITIES MANAGEMENT



PROBATE & MOVING CLEANS

We are a local Facilities Management Company based in Kent and have been established for over 15 years. We offer Probate Cleans, Moving Cleans and End of Tenancy Cleans. We clean everything from small Flats to Family Homes.

PLEASE CONTACT US FOR A FREE QUOTE

07508 868161

www.westcourtfacilities.co.uk - info@westcourtfacilities.co.uk



MASSAGES, FACIALS, DERMAPLANING,
NON SURGICAL LIFTS, RADIO FREQUENCY,
WAXING, BODY SCULPTURING,
MICRODERMABRASION,
LED THERAPY, ULTRASOUND,
CHEMICAL PEELS AND MUCH MORE

Mode, Hair, Beauty & Spa
Coxhill, Shepherdswell, CT15 7NN
www.thehavenspa.org
07813 893148

FB & Insta @thehavenspaatmode

Scout Hut at River

Friday - Beavers 4-30 to 5-30pm
Tuesday - Cubs 6-30 to 8-30pm
Monday - Scouts 6-30 to 8-30pm



The Lydden Bell



Available 7 days a week 12-2pm and 6-9pm

Sweet Chilli Baked Camembert with homebaked bread, chutney and grapes £6.95

Fried Whitebait with salad and tartare sauce £5.95

Cheesy Garlic Bread £2.95

Cheesy Chips £2.95

Ale Battered Haddock with handcut chips and peas £8.95

Chargrilled Homemade Burger with salad and handcut chips, Bacon and Brie, Plain or Stilton and Onion £8.95

Ploughmans Platter with mixed cheeses, ham, pickles, salad and homebaked bread £8.95

Wholetail Breaded Scampi with handcut chips and peas £8.95

Baby Back BBQ Ribs with Handcut chips, salad and coleslaw £8.95

Cumberland Sausages with Fried onion mash and peas £8.95

Roasted Vegetable Frittata with Side Salad £8.95

Call: '01304 830296' To place your Order



Temple Ewell Parish Council

Welcome to my latest Newsletter report for the Parish Council. I thought that July and August would be quiet in the parish but I could not be more wrong. All good intentions for a short meeting this month were dashed as the agenda grew and grew !

We welcomed back Robert Hamer onto Parish Council and would like to thank him for offering his assistance.

Also, we met our new PCSO, Megan Keehner who we hope will be an asset to our community despite having to cover six different parishes. She intends to spend time getting to know Temple Ewell and aims to hold a drop-in clinic every 2 months. She will also be contactable to discuss any policing matters.

It was discussed that there needs to be action at the junction of London Road, High Street and Templeside as this has become more hazardous for pedestrians. We soon hope to enter dialogue with Kent Highways regarding traffic calming measures. Any ideas are welcome ?

A report was received on the extremely successful Family Fun Day on the 21st July where more than 300 villagers enjoyed an afternoon of games, music and entertainment on the village field complete with our own "Bake-Off" contest as well as a bar and pizza from the Breakwater Brewery in Dover. A full report appears on page 31 of this newsletter, but I would like to thank our events team, led by Cllr. Kirsty Price for all of their hard work. Roll on the turning on of the Christmas Lights on the 1st December and a 75th Anniversary VE Day Celebration next May.

However, first we have our annual Village Footpath Walk on Sunday 8th September (meet for 1.00pm depart by Lower Village Hall) and I am particularly looking forward to the tea which follows that is laid on by the W.I.

Finally, we have taken the first steps towards moving the Parish more into the 21st Century both by upgrading our banking (which will stop me having to sign endless cheques !) and by developing better internet and social media presence.

If anyone has any issues they would like to raise, please contact our Clerk, Andy Howard-Grigg , contact details follow, or attend one of our Parish Council Meetings. We have the common aim of helping make Temple Ewell a great place to live.

Glenn Mousley – Chairman of the Parish Council

The full Parish Council meets on the last Tuesday of the month (excluding August and December) at 7.15pm at the Temple Ewell Baptist Church Hall on the corner of the High Street and London Road. Parishioners are most welcome to attend and contribute to meetings.

The agenda and minutes are displayed on the Parish Council notice board by Southdown Stores and on the Council website. Should you wish to put anything on the notice board please contact either the Clerk or the Chairman.

Contact details for councillors are on the website:

www.templeewellpc.kentparishes.gov.co.uk

Mr Andrew Howard-Grigg (Clerk to the Council)

Merleigh, Northbourne Road, Great Mongeham, Deal, Kent CT14 0HJ

01304 361774

Howard_Grigg@hotmail.co.uk



Dover Flower Club

Whitfield Village hall at 7.15 pm

September 23rd - A Demonstration by Iris Shaw, entitled 'Life in France'. There will also be a competition for members and guests to enter. The title for interpretation is 'Wine Harvest'

October 28th - A workshop by Marian Townsley - a pedestal arrangement.

We always welcome visitors and new members to our friendly club, we have a sales table for all your flower arranging accessories, refreshments and a raffle.

For further information please contact ,
Maureen Edmond, edmondrandm@talktalk.net
Janet Gray, janetgray@btinternet.com



Kent Wildlife Trust

The roadside gang of Temple Ewell for the Kent Wildlife Trust started back on Tuesdays 9.30-3pm.

To join us on our tasks call Bob Newington on 827138. We also have Sunday tasks once a month.



W. J. Farrier & Son Ltd

Independent Family Funeral Directors

Since 1948



**PERSONAL 24-HOUR SERVICE
PRIVATE CHAPELS OF REST
TRADITIONAL, BESPOKE & ALTERNATIVE FUNERALS
CREMATIONS & BURIALS
ECO-FRIENDLY FUNERALS
INTERNATIONAL REPATRIATION**

Golden Charter 
Smart Planning for Later Life

Pre-paid Funeral Plans

Award Winners - 2007,2009,2010,2011,2013 & 2015

01304 201665

161 London Road
Dover, Kent
CT17 0TG



01303 245500

37 Bouverie Road West
Folkestone, Kent
CT20 2SZ



A personal service from your local Independent Family Funeral Directors

www.wjfarrierandson.co.uk



Temple Ewell W.I.

We didn't have a speaker at our July meeting so after our business we enjoyed a strawberry and cream tea accompanied by some delicious shortbread. After refreshments we put forward ideas and suggestions for our 2020 programme. To finish the meeting we had a couple of games of Bingo and in all it was a very enjoyable evening.

We held a coffee morning in August and we are now looking forward to our meeting on September 12th when we will be practising quigong!!



Temple Ewell WI

in the Village Hall

Saturday 19 th October 7 for 7.30 pm

Teams of up to 8 people £4 per person

Contact Jan 01304331051 /07773476563 or Anne 01304827138.

American Supper - Raffle

Choices, Choices!

**Anne, have another chocolate.
Well, really, what a thing to say.
That's like saying, buy another handbag!
Impossible to ignore!**

**Anne, have another chocolate Mocha,
what a silly thing to say.
Almost like saying, buy some new shoes!
Impossible to ignore!**

**Well, honestly, why offer me all these indulgences at all?
Its insulting to even ask!
I have a waistline to watch, you know! In itself a task,
and at the moment, impossible to ignore!!**



© Anne Cox 2019



Lornas Barber
closed mondays
open all day tues,thur, fri
wed 9am-12pm sat 8.30am-3pm
phone 07512 117730
2 high street, temple ewell ct16 3du



C D WOODWARD A.I.P.

PLUMBING & HEATING ENGINEER

Repairs, Maintenance, Installation & Gas Servicing

100 Canterbury Road, Lydden, Dover, Kent. CT15 7ET



Home/fax: 01304 831345

Mobile: 07850 579303



Charles A Lynch RIBA

Chartered Architect - Temple Ewell

Design & Planning Service

Free no obligation consultation

Discuss your ideas and explore some options

t: 01304 332 355 m: 0797 494 2364 charles@caldesign.co.uk

www.caldesign.co.uk



LUNABEES

DOG SERVICES

Gretel's dog and pet services covering Dover
area and the surrounding villages

07853 889014

Instagram: @Lunabees

Facebook: @Lunabeesdogservices

Email: gretelstevens@icloud.com

Fully insured and DBS checked

Community-Led Housing

Community-led housing is when communities come together to develop the homes that are needed in their local community. This housing can be for rent, low cost ownership, or for sale, but it is designed to be always affordable for the community that needs it. Community-led housing can take many forms, and as such it is flexible to suit the requirements of a range of different circumstances.

Community groups with ideas for delivering community-led housing in their area, but who need some financial assistance to help get their projects started, are invited to apply for the DDC Community Housing Grants scheme.

Funding

There are two levels of funding and groups can apply for one in each year:

- Up to £3k to assist in the early stages of a project – for groups to run consultation events, attend training, engage with consultants, identify a site, evidence housing need and demand, etc.
- Up to £10k for projects at a more advanced stage – for assistance with initiation costs such as surveys, feasibility studies, planning advice, etc.

The purpose of the funding is primarily to build skills and knowledge amongst communities, to help them to investigate the feasibility of providing community-led affordable housing developments, but also to contribute towards specialist support and consultancy services where appropriate. Please visit our dedicated Community Housing Grants webpage to find out more: <https://www.dover.gov.uk/Housing/Community-Housing/Community-Housing-Grants.aspx>

Training Sessions

A wide range of courses and training is available for anyone embarking on a community-led housing or self-build project. Here at Dover District Council we are providing free training sessions on a range of topics to help anyone interested in community-led housing or self-build. Our next training session will be:

Writing “Winning” Funding Applications

Kathy Roddy from MVA

This will be a two part course run over two Saturday mornings in September (7th and 21st)

9.30am to 1pm

Westmarsh Village Hall, Wass Drove, Canterbury, Kent CT3 2LU

Our training courses are free to attend but pre-booking is essential through our dedicated Community Housing Training web page: <https://www.dover.gov.uk/Housing/Community-Housing/Community-Housing-and-Self-build-Training-Courses-and-Events.aspx>

Keep Me Posted

To keep updated with the latest community-led housing training courses and information, please sign up to Keep Me Posted e-news bulletins: <https://public.govdelivery.com/accounts/UKDOVER/subscriber/new>

Contact

If you would like any further information or have any questions please do not hesitate to contact a member of your community housing team.

Talha Islam on: Talha.islam@dover.gov.uk, 01304 821199, 07596 239838 or

Naomi Palmer on: naomi.palmer@dover.gov.uk, 01304872274 or 07740 560924



Brownies

Last term the girls did their 'Grow Your Own' badge, by growing runner beans and sunflowers. They had to look after the plants and draw a picture of their own favourite garden.

On our farm visit we saw chickens in their pens and went inside to watch and feed them. Then we went to see the pigs. There were three of them and we fed them. We saw sheep and held the lambs, which were in a field with lots of droppings which we tried to avoid! In another field there were two goats, four baby goat kids and two horses. We were able to feed grass to one of the horses but not the other one as it was putting on weight. We took photos of the animals and we all enjoyed ourselves.

Our Brownie Sports Day was at Whitfield on a nice, hot, sunny day. There were four teams. Connie and Charlotte won places in the events they took part in. They finished the day by running around the field, which took about eight minutes.

We have also taken part in the Gardeners' Summer Show by making cards, Rice Krispie cakes and flower basket arrangements.

We will take part in the Church Flower Festival by covering our toadstool in paper and plasticine flowers that we have been making.

Three new girls have recently been enrolled into our Unit.

Brown Owl

MARK WALTON

Cranbrook, Dover Road, Guston
Tel: 01304 219886
Mobile: 07970 745272

BRICKWORK CONTRACTOR & BUILDER

Re-pointing New buildings
Driveways Block-paving

Alterations Extensions
Conservatories Patios

Brabourne Gardening Services

Lawns mown • Edged •
Dressed • Scarified
Hedges cut • Trees pruned •
Shrubs tidied
Fencing and Patios

Weekly or Fortnightly Visits
One off clearances
Small removals undertaken

Call Dennis Brown
Tel: 01304 829712
For Free no obligation estimate



Kearsney Property Services

ATTENTION LANDLORDS & PROPERTY OWNERS

Looking to rent out your property in the village?

We are always in need of good quality properties for our professional clients in the local area. We fully reference all applicants.

Thinking of buying a property as an investment?
Free advice given

For further information contact:
Karen Southon at
Kearsney Property Services

Property Management | Property Sourcing | Lettings

Tel: 01304 825153

Email: Office@kearsneypropertyservices.co.uk



E.J. Ditton & Co. Ltd

ELECTRICAL CONTRACTORS

All electrical work undertaken

Free, no-obligation quotations

Local business established for over 60 years

sales@ejditton.co.uk

01304 205141



REGISTERED MEMBER



FAMILY FUN DAY

We were very lucky with the weather on our family fun day which I'm pleased to say had a great turn out. It really was wonderful to see families and friends sitting together enjoying the atmosphere and music. It was so nice seeing everyone getting involved with the activities provided.

The crazy golf was a great hit with all ages and the children loved Magic Al's magic show as well as following him around on his stilts trying to catch his giant bubbles. The obstacle course was also popular, especially with the younger generation.

A big thank you to Mrs Liz Waller and Christopher for judging the Bake Off, which was no easy task with lots of fantastic entries!! A huge congratulations goes to Temple Ewell's 'Top Bakers' Lesley Stephenson who won the adult category and Flynn Price who won the children's category. The cakes were sold for donations afterwards and raised £70 which was donated to the church and W.I.

Thank you to the Newsletter for running the raffle with some great prizes which managed to raise a fantastic £145 for them.

We would also like to say thanks to:

Branching out for doing a great job providing games for the younger children.

W.I for serving tea and coffee.

Isabel Mousley and Mrs Parker for face painting ALL DAY!!!!

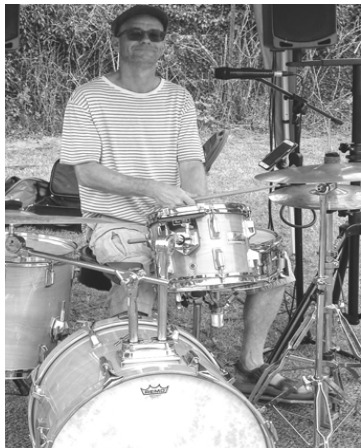
And everyone else who was involved in the planning and setting up for the day.

Lots of people commented on the day about what a great atmosphere there was and I completely agree!!! It was a great day!!!! How lucky we are to live in such a fantastic village and community.

Kirsty Price



FAMILY FUN DAY
July 2019



Love and Passion!

Everyone has a passion, don't they?

Mine? Bags!

**Small ones, medium ones, large ones
and in every colour you can think of.**

**Long handles, short ones,
and ones small enough just to fit in your hand,
ones to hold the bare essentials, to make you think
and, of course, those to hold all but the kitchen sink!**

When did this passion begin, do I hear you ask?

My Mum told me I was four, just four.

From whom did I inherit this passion then?

“Me, my Mum and my Gran”, she said, “and further back more”

Those I tire of, go off to family and friends.

**But when I see them carrying the bags,
I wonder if I was rather rash in parting with my loves,
but its just a parting sorrow.**

I hope they get as much pleasure from my obsession.

The glint in their eyes tell me they do!

**But at least given my size,
they cannot share in my other passion – The Shoe!**



© Anne Cox 2018





CARE ENTERPRISES

Temple Ewell Nursing Home

Our aim is to provide high quality personalised nursing care to meet the needs of the individual whilst encouraging choice and independence in a friendly, relaxing and homely environment.

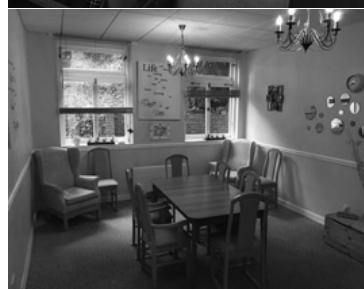
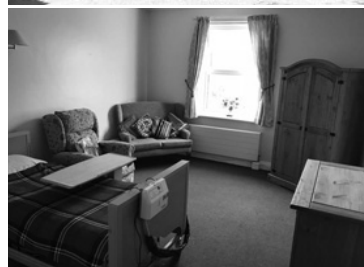
We are sensitive to our resident's requirements for privacy, confidentiality and personal dignity.

Home cooked fresh meals, regular activities and a full complement of highly trained nursing and care staff help us to maintain the best possible care and comfort for our residents.

Refurbishments to our home and improvements to our service are in process and ongoing.

If you or your loved one is considering the need for residential or nursing care, please feel free to contact us or come and visit us to see what we can offer.

We look forward to welcoming you to our home.



Temple Ewell Nursing Home

Wellington Road, Temple Ewell, Dover, Kent, CT16 3DB
01304 822206 (Office) / 01304 822246 (Nurses) / 01304 822208 (Fax)

www.temple-ewell.co.uk

admin@temple-ewell.co.uk / gillian@temple-ewell.co.uk

Home Hairdressing Services

Call Sue on 07795 362812 *Fully Insured*

Wet cut and blow dry £21

Ladies wet cut £15

Perms, colours and highlights from £24



All colours require a skin test
before appointment.

Quality L'Oreal Majirel Colours

NHF + City & Guilds Qualified

Working hours are 9am - 2pm Monday to Friday School Term Times Only



Whitfield Computer Services

Lee Eversfield fdsc

Hardware & software problems • Installations • Upgrades
Repairs • Internet set-up • Virus removal • General advice

Tel: 01304 204227

E-Mail: lee.eversfield21@tiscali.co.uk

110 St Davids Avenue, Dover, Kent, CT17 9HN

NO FIX, NO FEE • SPECIAL RATES FOR SENIOR CITIZENS

namaste

Reiki master teacher/practitioner

Healing mind body and soul

1 hr. Reiki session £20

in the comfort of your home

Add on foot & leg massage £10

Hand & arm massage £5

**Call Annie on
07927791988**

PILATES WITH MAXINE



Body Control Pilates Qualified, Level 3 Advanced Instructor

Group Classes & 1:1 Private Lessons

- ♦ 6-7pm Mondays in Lydden Village Hall
- ♦ 10-11am Tuesdays in Dods Mill, Temple Ewell
- ♦ 6-7pm & 7-8pm Wednesdays in River Village Hall

Contact me for further information:

07597949241 or maxinephillips@live.co.uk

BODY CONTROL
PILATES®

Art Workshop Exhibition

Firstly an enormous thank you to all members of the workshop who gave their help from setting up to taking down of our art exhibition recently held in the Village Hall. These same members took shifts to welcome, chat and make refreshments as required.

A big thank you to Mrs Carole Spink for typing and photocopying the publicity posters and leaflets. Thank you too Mrs Frances Hutley in the composition of same. And Laminators extraordinaire, Rita, Terry and Colin.

Statistics show:

Footfall - 83

Paintings sold - 4

Prints and cards - 30

Very positive comments in visitors book - 20

A surprising success was The kiddies drawing table! They became happily engrossed with their own art work, allowing accompanying adults to browse relaxedly. We have lots of budding artists waiting in the wings. Thanks for the idea Ann and supplying the drawing paper. An abiding impression was that of a warm village feel created by the visitors themselves. Great fun putting names to faces and making new friends.

Last but not least is a huge thank you to our co-ordinator, slave driver, general factotum and good mate Mr Phil Barnes.

Watch this space for next year's Art Exhibition. You are all welcome to drop in any Wednesday during term time to see what goes on at our workshop.

But most of all Thanks To You Intrepid Visitors who gave us so much support. Good One!!!!!!!!!!!!!! ***Heather Heading***





Letters to the Editor

We would like to hear from you. What do you want information on? Need help with something? Want to comment on a local issue? This is the place to do it! Send to the Editor - details on page 3

Dear Editor

May I thank the Parish Council for such a wonderful afternoon at the recent Family Fun Day on July 21st.

The brilliant organisation and diversity of events were great.

I know from experience that these things don't happen without a lot of thought and planning.

Well done!! Same time next year?

Kind regards
Alison Worton

Temple Ewell Art Workshop

Meets in the Village Hall every Wednesday during term time 2-4pm.

New members are welcome.

River Art Group

We currently have vacancies in our Class that meets on Tuesday mornings 9.30-11.30 term times in River Village Hall. Our teacher is local well-known artist Penny Bearman. Call Jeanette on 826386 for more info.

Guess the Show - It was Goody Two Shoes in 2006.



Respectful, honest and caring dentistry from a long established private practice with the best of modern dental advances.

Ages 0 -100 years old (and more) welcome!

"Not at all anxious" to "Been dreading this for years" absolutely welcome.

**Dr Dorothy Riley and her team
look forward to welcoming you!**

www.doverpriorydental.com

**3 Priory Road, Dover, CT17 9RQ
01304206558**



A local business catering for all your household electrical requirements including;

- ✓ Circuit repairs & Re-wires
- ✓ Fuse Board Replacements
- ✓ Outside Power & Lighting
- ✓ Fire & Security Alarms

Work fully guaranteed with additional protection provided to Homeowners under the NICEIC's warranty scheme for extra peace of mind.

Call us today to arrange a free estimate and pre-work survey.

Tel: 01304 823028 / 07984 453326
info@mwlelectrical.co.uk

Quality Service

Quality Workmanship

Quality Aftercare



KITCHEN DESIGN AND INSTALLATION

Working with you to create a space that compliments your home, lifestyle and budget.

Quality and flexibility are central to our approach and we provide a number of options and benefits;

- ✓ Installation Only or Full Design, Supply & Installation Service
- ✓ Comprehensive Service Including Electrics, Plumbing & Appliance Installation
- ✓ Optional Decoration & Tiling Service
- ✓ Outstanding Value For Money

Call us today to arrange a free, no obligation survey and quotation.

Tel: 01304 823028 / 07984 453326
info@mwlelectrical.co.uk

Quality Service

Quality Workmanship

Quality Aftercare

Useful Telephone Numbers

Lydden Surgery	832160
NHS Out of hours medical service	111
Dover Health Centre	865500
Buckland Hospital	222510
Canterbury Hospital	01227 766877
William Harvey Hospital	01233 633331
Queen Elizabeth the Queen Mother Hospital	01843 225544
Dover District Council	821199
KCC Highways to report faults with roads/streetlights etc	03000 418181
Citizens Advice Bureau	03448 487978
Dover Library	204241
Dover Leisure Centre	201145
Stagecoach Dover	08456 00 22 99
Tourist Information	205108
Dover Community Safety Unit	872220
Police Fire Ambulance - Emergencies	999
Police - to report a suspicious event	101
Police - to report a crime where the offenders have left	101
Social Services	03000 414141
Crimestoppers	0800 5551111
Gas Emergency	0800 111999
Electricity Emergency and Power Failure	0800 783 8866
Water Supply Emergency	0845 888 5 888
Waste Water Emergency	0845 278 0845
Childline	0800 1111
The Samaritans	116 123
Post Office Customer Services	0845 7740 740
Dover Community Radio	744177

The Temple Ewell Newsletter is published monthly in the interest of greater unity within the community. It is distributed free of charge. Editorially it aims to be free from political, sectarian and institutional bias and seeking neither to be divisive nor controversial, it does not support or oppose any cause. The appearance of an advertisement in this Newsletter does not mean that we endorse the advertiser's goods or services. While we will not knowingly run an advert that is untrue, The Newsletter is not responsible for the accuracy of any advertising material or the usefulness of an advertised product or service.