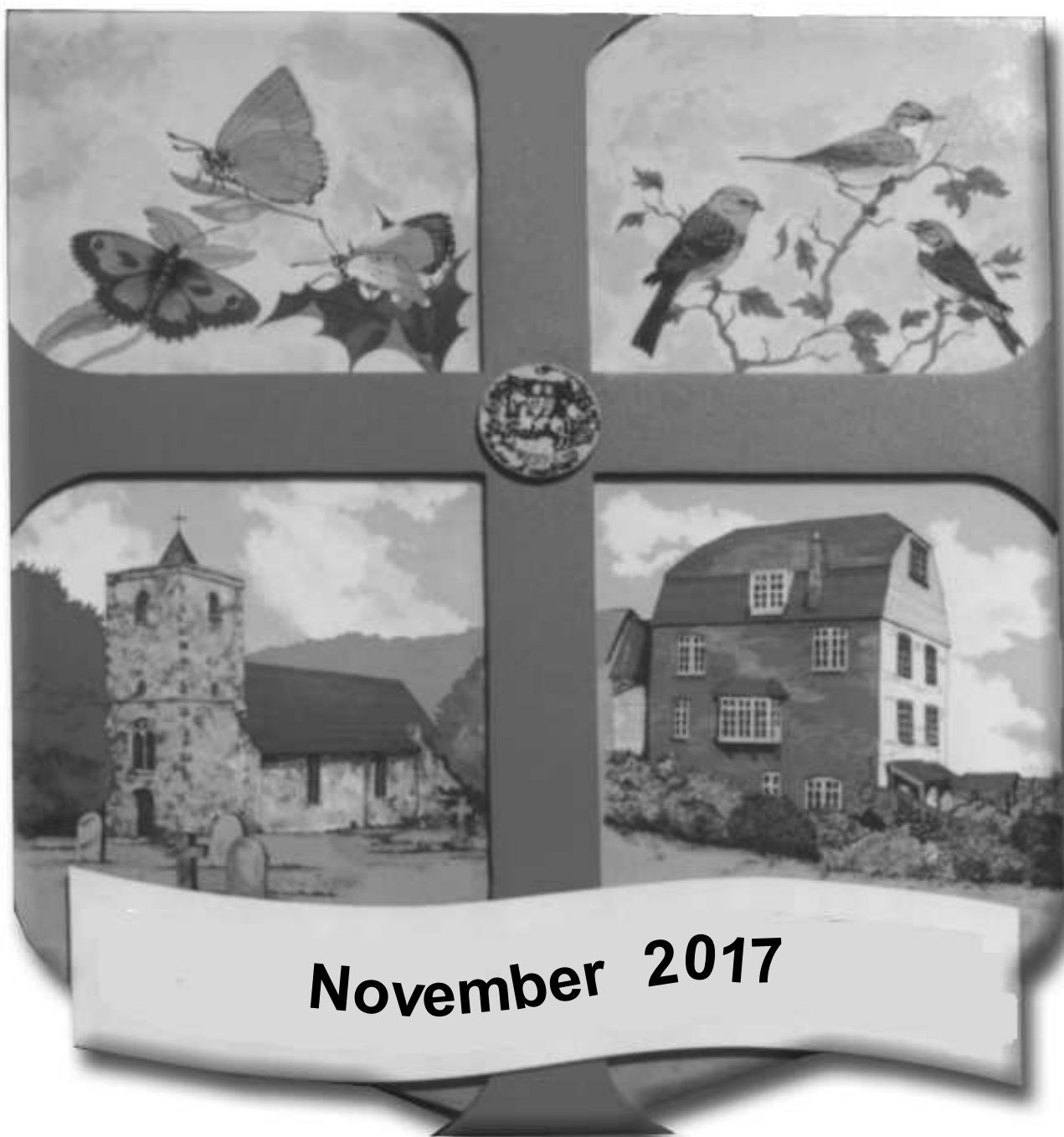


tenews.co.uk

Temple Ewell Newsletter



Temple Ewell Organisations

Parish Council Chairman	Mr C Smithen	332139
Clerk to the Parish Council	Mrs J Coulson-Wright	820273
District Councillor	Mark Rose	07733 080861
County Councillor	Geoffrey Lymer	07960 490929
T E School Executive Head Teacher	Mrs Jo Hygate	822665
Friends of TE School (Sec - Trudy Adams)	friendsoftheschool@hotmail.com	
Sunday Club	Mrs J Miles	824280
Friday Club	Yvonne Sacker	330017
Art Workshop	Antionette Tourret	826292
Age Concern	Mrs K Green	207268
Brownies	Mrs A Newington	827138
Community Coffee Mornings	Mrs J Miles	824280
WI	Jan Luckhurst	331051
Produce Association	Trevor Barlow	824787
Temple Ewell Players	Mr M Brodie	07766 228728
Men's Club	Mr A Ladbroke	824948
Village Hall Bookings/Enquiries	John Holness	448140
Youth Club	Marilyn Holness	448140
Tiddlers	Amanda Lomas	07506 811851
Branching Out	Marilyn	448140
	Trish	820966
Kent Wildlife Trust Conservation Tasks	Bob Newington	827138
Short Mat Bowls Club	Roy Parks	824618
Allotment Manager	Peter Upton	823540

St. Peter and St. Paul Temple Ewell

Church Wardens - Mr P Austen 208727 Mrs E Waller 824709

PCC Secretary - Mrs C Roberts 822850

PCC Treasurer - Chris Tyler 07715 078882

Choir Master - R Christian 07920 057763

HOWEVER PLEASE NOTE:

For Weddings - Peter Austen 208727

For Baptisms - Christine Roberts 822850

For Funerals - Liz Waller 824709

Baptist Church

Rev Ewart Graham on 375823 or John Woodland on 822982

Temple Ewell Newsletter Editorial Committee

Chair	Cindy Tuson	823325
Secretary	<i>Vacancy</i>	
Treasurer / Editor / Web	Jeanette Potts	826386
Vice Chair	Jenny Olpin	825011
Distribution	Jenny Miles	824280

Hello all

We had our AGM at the beginning of October and, as usually happens, none of our readers turn up. Actually, that is not strictly accurate we did get one gentleman come and we were delighted to see him, so delighted in fact that we may have scared him off with pleas to join the Committee! I hope not because he would be a valuable addition.



Sadly our Committee has dwindled of late, there are now only four of us. Because of this Jenny O has written a 'Crie de Coeur' asking for villagers to consider joining us. It's on page 6.

On 11th November is Remembrance Day, a very important day in the Sea Cadet calendar as they will be joining the march with their band playing in the annual parade through Dover to the Town Hall. The other cadet forces will also be in attendance along with old soldiers and local dignitaries.

It's always a very moving occasion and if you haven't attended before I would recommend it.

Stay safe on Bonfire Night.

Editor: Jeanette Potts
Email: templeewellnews@gmail.com Tel: 01304 826386
Address: 13 Chilton Way River CT17 0QB

We welcome all contributions to the content of the Newsletter, but please remember that the deadline date for the next issue is 8pm on the 15th of the month.

NOTE: You should be aware that articles are also published on the website www.tenews.co.uk - please inform us if you want any part of your article withheld from that particular medium.

A copy of every Newsletter is posted on the website, including the village diary. Make sure you log on to www.tenews.co.uk

tenews.co.uk
Temple Ewell Newsletter



Village Diary 2017

November

Thurs 7	Coffee Morning in the Village Hall
	Parish Council Finance Committee Meeting
Thurs 9	W.I. Meeting 7pm in the Village Hall
Sun 12	Afternoon Tea in the Millennium Hall for Operation Christmas Child - p16
Thurs 23	Coffee Morning in the Village Hall
Sat 25	Bazaar in the Village Hall 2pm - St Peter & St Paul Church
Tues 28	Parish Council Meeting 7.15pm in the Baptist Church Hall

December

Sun 3	Christmas Lights switch on at Players Corner 5.30 - 6.30pm
Thurs 7	Coffee Morning in the Village Hall
Thurs 14	W.I. Meeting 7pm in the Village Hall
Thurs 21	Coffee Morning in the Village Hall

2018

January

Thurs 11	W.I. Meeting 7pm in the Village Hall
21-28	Players' Panto - Dick Whittington

Feburary

Thurs 8	W.I. Meeting 7pm in the Village Hall
Sat 10	Produce Association Coffee Morning

March

Thurs 8	W.I. Meeting 7pm in the Village Hall
Sat 31	Produce Association Spring Show

April

Thurs 12	W.I. Meeting 7pm in the Village Hall
Tues 24	Annual Parish Meeting

May

Thurs 10 **W.I. Meeting** 7pm in the Village Hall
13-20 **Players' Spring Show**
Tues 29 **Parish Council AGM**

Thurs 14 **W.I. Meeting** 7pm in the Village Hall

July

Thurs 12 **W.I. Meeting** 7pm in the Village Hall
Sat 14 **Produce Association Summer Show**

August

Tba **W.I. Outing**

September

Thurs 13 **W.I. Meeting** 7pm in the Village Hall
Sat 15 **Produce Association Autumn Show**

October

Thurs 11 **W.I. Meeting** 7pm in the Village Hall

November

Thurs 8 **W.I. Meeting** 7pm in the Village Hall

December

Thurs 13 **W.I. Meeting** 7pm in the Village Hall



Don't forget to give us
your diary dates for
2018
as soon as possible

Our Future

So here we are in the 17th Year of Temple Ewell Newsletter.

Our origins, as many of you know, were from the demise of the Church LYTE magazine. As Parish Councillors we were concerned that Temple Ewell needed to continue to have a news and information circulation that would be free for all households in the Parish and so Temple Ewell Newsletter was born.



Over the ensuing years a small committee, whose membership has ebbed and flowed, has managed and overseen the 10 yearly editions. We are a small group that meets about 6 times a year, operating with a Chairman, Secretary and Treasurer. Key to all of this is the Newsletter production team of Editor, Web Site Manager, Advertising Manager and Distribution Manager.

Currently our Committee and Production Team consists of 4 of us who have been involved for several years, 3 of us since its inception. We now desperately need to begin succession planning in ensuring the future of the Newsletter. We are ready to begin training and supporting a new, energised and forward thinking group of people who are ready to take the Newsletter into the next decade.

Without you our future is uncertain as we ourselves are getting older. Please discuss with friends and/or like minded people and come along to a meeting to see for yourselves or ring any of the Committee/Team listed in the Newsletter to discuss.

You are the future of the Temple Ewell Newsletter and just imagine the talents you can develop that you never knew you had..... let us show you!

Jenny Olpin

templeewellnews@gmail.com
www.tenews.co.uk

WOULD YOU LIKE TO ADVERTISE WITH US?

New advertisers welcome

Newsletter and website:

1/4 page	£65.00
1/2 page	£125.00
Full page	£240.00

Pays for the whole year (10 issues x delivery to approx.750 households each issue)

One offs :

1/4 page	£10	1/2 page	£20
Full page	£40		

Newsletter and website - tenews.co.uk
Email Jeanette on templewellnews@gmail.com

Father Christmas Grotto

3rd and 10th Dec 4pm till 5-30pm at Greenwood Farm, Chalksole,
Green Lane, Alkham CT15 7EE Tel: 01304 824340



Donations to Demelza House - there will be a gift for every child

Sandilands Dental Studio

Quality Private Dentistry

This is a traditional Private Dental Practice looking after patients' needs; we provide a friendly and professional dental service that gives you the smile and health you have always wanted. Our surgery offers the newest innovations in dentistry, so you are guaranteed the very best treatment. This Practice is owned personally by the Dentist ensuring continuity of care.

We are pleased to announce that we now offer our patients the option of discreet orthodontics for adults. Six Month Smiles® utilises specialised clear cosmetic braces to gently straighten and align teeth in an average time of just six months. We also offer the latest non-invasive beauty treatment, anti-wrinkle and fillers.



Here at Sandilands we strive to offer the best dental experience. We believe in making a visit to the dentist an enjoyable one, by providing a relaxing and friendly environment with all the latest technology. We are Dover's best kept secret.

Easy access car park outside.

Telephone: 01304 201001
website: www.sandilandsdentalstudio.com
Email: sandilandsdentalstudio@hotmail.co.uk

D. J. Plumbing Services

ALL ASPECTS OF PLUMBING
WORK UNDERTAKEN

- Ball valves to Bathrooms
- Taps to Tanks
- City & Guilds Qualified
- All Work Guaranteed
- All Jobs Covered
Big or Small
- Free Quotes
- No Call Out Charge
- Friendly & Reliable



Call Dave
01304 369961
07971 421766

Email: djplumbing123@Gmail.com
Office: 79 The Street, Sholden, Deal CT14 0AJ

CLEVERLEY & SPENCER

Monumental Masons
Est 1869

Member of
NAMM, NAMLC, SAIF(ass)
BRAMM and **RQMF** registered

**CONTACT US FOR
FRIENDLY, HELPFUL ADVICE**
All types of memorials supplied
and cleaned throughout Kent,
East Sussex and London

CONTACT:
5 Frith Road, Dover
01304 206379
www.clevspen.co.uk

www.
millviewbuilders
.co.uk

**Household Maintenance,
Home Improvements
& General Building Work**

- Registered Velux installer
- Registered Firestone installer
- Conservation & listed building

Mob: 07966 003351

Tel: 01304 332949

info@millviewbuilders.co.uk



VELUX



SPITFIRE



**TREE SURGERY
GARDEN MAINTENANCE
STUMP GRINDING
SERVICE**

24 HOUR EMERGENCY CALL-OUT
Fully Insured
Free Quotes

NICK HENSON
01304 241400 / 07789 160092
nickhenson.nh@googlemail.com



Dover Scottish Country Dancing Group's 70th Anniversary

Did you know....on Mondays between 8 and 10 pm the Dover Scottish Country Dancing Group get together in Temple Ewell Village Hall for jigs, reels, strathspeys and great conviviality? And, what's more, we've been doing this (in various venues) for 70 glorious years!



Our Teacher, Phyllis cutting the celebration cake.

On 7th October we teamed up with our sister group at Deal to mark the occasion by an anniversary dance. Dancers from other groups from across the spectrum of Kent Association of Scottish Societies (KASS) came to help us celebrate. Our programme reflected changing tastes in the dances over the last 70 years - from the "flirty" Hamilton House and The Duke and Duchess (now HRM!) of Edinburgh to perennial favourites such as Mairi's Wedding and The Montgomeries' Rant- all to the toe-tapping music of The Caledonian Reelers, one of our most popular bands.

If you're feeling curious, you can get an inkling of what we're about by going online <https://www.scottish-country-dancing-dictionary.com/> and clicking on the youtube button at the right-hand side of the screen; you can then navigate to the dances mentioned above and see various groups (not us!) in action.

You'll see that Scottish Country Dancing is enjoyed right round the globe, from USA to Australia, all over Europe and even the Far East, by experts and (very!) raw beginners!

If you fancy giving it a go yourself, come along and join in the fun, all you need are soft shoes and a fairly spry (not super fit!) constitution. We're a mixed ability group with a very relaxed attitude! Age is no barrier, and you don't need a partner. The cost is £2 including tea/coffee. Give us a ring on the number below and we'll be ready to show you the basics, you'll be jigging and reeling in no time! The jolly tunes lift the spirits and the dances keep us young and fit in the nicest way. Here's to our next 70 years!

For more information call:

Phyllis

01304 826 390

Vanessa

01304 827 078



Brownies

This term we are doing our 'Out and About' badge. We are working with compasses and making pictures with the points. We made a cat, a number four and a girl.



We had a Treasure Hunt with letters hidden around the Baptist Church which we had to find. There were two teams. When we found the letters they spelled out 1st TEMPLE EWELL. At the end we hunted for some hidden Easter egg bags.



We had a walk around the village and up to Target Firs and along the back roads to Kearsney Campsite. On the way back we heard a tawny owl (male) calling. It is the first time we have heard one.

For the Flower Show we made miniature gardens, Halloween decorations and took the sunflower heads we had grown.

After our walk we played a game with objects on the table and we had to choose one while another girl was not looking and then had to guess what was missing.

In November some of the girls will be going ice skating.

Delphi, Nicole, Honey and Willow



Plumbing & Heating Engineer
Putting your needs first

J.C Gas is your local heating engineer, providing honest and impartial advice thus keeping your costs to a minimum.
J.C Gas takes pride in providing a fast and friendly service, working to the highest of standards.

Gas safe registered and fully insured
Gas appliance servicing, installation and repair
Central heating, Plumbing - Fast response
Dover, Deal, Folkestone and all surrounding areas

Tel: 07824 634924 Email: Jason.jcgas@gmail.com www.jcgasservices.co.uk



Guitar Tuition

Enhanced CRB Check

Phone Steve 07792 349022

Harbour
.....
Print & Signs

auto graphics • signs • printing

t. 01304 208732

www.harbourprint.com

ABBEY FARM HOLIDAYS

Beautifully converted self catering barns, ideal for visiting family & friends.
Comfortably and extremely well equipped with wood burners, wi-fi and dogs are welcome too. Accommodating up to 10 people and only 1 mile from River.

For more information contact Sue Moynan
ST RADIGUNDS ABBEY FARM DOVER CT15 7DL
Tel 01304 825963 email sue@abbeyfarmholidays.co.uk
www.abbeyfarmholidays.co.uk



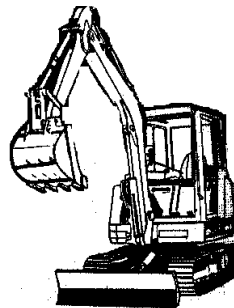
R.C. McDONALD
GENERAL BUILDERS



Your local Builder with over fifty years experience

**Extensions, Renovations, Alterations and General Maintenance,
Roofing, Painting & Decorating**

Tel: 01304 821139 or Mobile 07885 175683 for FREE Estimate



T.R.M. GROUNDWORKS
&
PENNOCK PLANT

**DRIVES LANDSCAPING FENCING
AND
ALL GENERAL GROUNDWORKS
TELEPHONE
01304 830584 OR 01304 830876**



Parish Church of St Peter & St Paul

November services, to which we warmly welcome you.

At Temple Ewell our Sunday Club meets at 10.30am during term time as advised.

**Nov. 5th Father Robert Farrell
Nov.12th Father Robert Farrell
Nov.19th Father Peter Sherred
Nov 25th Father Michael Morris
All services at 10.30a.m.**

Well the winter months are here, you can tell that by the fact that 'Strictly come Dancing' is now on the television up until Christmas. It was a shame to see the dancing vicar voted off, but I expect his parish may be pleased as they will see him more often now.

Normal services have been resumed after our Harvest Festival celebration. Many thanks to all those who helped with the service and a special thank you to Alison for organising a wonderful lunch afterwards in the Millennium Hall. We are working hard to keep us going with our Sunday services and we seem to be organised up to 'Christingle' service and Christmas which seems to be fast approaching. We are most grateful to the visiting clergy who are helping us.

I was very pleased with the response to our Annual Gift Day, which helps us to maintain our building and keep it available to those who may need it. Thank you for your much valued support. It was good to meet and chat to those who came along. It was a shame the weather didn't play its part and support us too.

Peter Austen



Villagers enjoying the Harvest Lunch

<https://www.facebook.com/templewellpepaul>

St Peter & St Paul

Christmas Bazaar

25th November 2pm in the Village Hall



Raffle, Tombola,
Cakes, Gifts
and other stalls

Any donations gratefully received by Jenny 824280 or Margaret 208727

Christmas Tree Festival – Advance Notice

Following the success of last year, we are hoping to enhance this year's celebration. We welcome ideas from last year's participants and any other organisation that would like to join in the festivities.

The trees will be displayed from 15th – 17th December in St Peter & St Paul Church. You may wish to display a small nativity scene beside your tree if you wish. Further details next month or from Jenny Miles 824280 if you want to get organised!

Sunday Club

We enjoyed Harvest Festival and now look forward to Christmas. Sadly we learnt that Gareth, our donkey who we have sponsored for a good few years, had passed away and we now have a new donkey to care for. We were pleased with helping to buy a box for 'love in a box' and we will fill it with toys and toiletries for children who are not as fortunate as us.

Love in a Box Tea Afternoon

Sunday 12th November at 3pm
in the Millennium Hall
£4 per person

Full boxes welcome or separate contributions gratefully received. We look forward to seeing you there. See details next page.



Operation Christmas Child

The absolute last day for collection of shoe boxes is 12th November. All monies raised will be for the postage. Unfortunately the postage for each box is now £5 so if you can pop a fiver in your box it would be most appreciated.

Here are a list of items to go in the box and don't forget to wrap your box (lid separate for checking).

Toys - dolls or stuffed toys (with CE label), toy trucks, harmonica, yo-yo, skipping rope, ball, small puzzles etc.

School Supplies - Pens, pencils & sharpeners, crayons or felt pens, stamps & ink pad sets, writing pads or notebooks & paper, solar calculators, colouring & picture books etc.

Hygiene Items - Toothbrush and toothpaste, bars of wrapped soap, comb or hairbrush, flannel.

Other Items – Hat and gloves or scarf, sunglasses, hair accessories, jewellery set, wind up torch, wrapped sweets (best-before-date must be at least March of the following year).

£5 postage



Any queries or you need your box picking up ring Amanda 07506811851 or Jenny 824280.



Temple Ewell W.I.

We welcomed Graham and his motorbike to our meeting in October. Graham is part of a team of volunteers from SERV Kent blood runners. This is a charitable organisation that delivers blood, blood products, medical equipment, drugs and samples to and from hospitals at night. The volunteers are on call between 7pm and 6am every day of the year.

The volunteers use their own cars or motorbikes and the fuel and running costs of their vehicles are met by the blood runners themselves. They are expected to commit to one night duty every two weeks or part of the night if it has to fit in with their regular employment. They are an army of volunteers whose only reward is the satisfaction that they are helping people and possibly saving lives.

Our next meeting on 9th November will be our Annual Meeting when we will be electing our committee and officers.





TEMPLE EWELL VILLAGE HALL

for all your functions

To hire the hall
call John Holness
on 01304 448140

KINGS

Fencing & Garden Maintenance

Phone for a FREE Quotation

0771 999 88 54

The Mangle Laundrette

21 Worthington Street, Dover Kent CT17 9AU

www.doverlaundrette.co.uk

For all your washing needs

All large items including duvets, blankets etc.

Ironing

PICK UP & DELIVERY SERVICE

(Normally same day)

APPOINTED AGENTS FOR JILLY'S DRY CLEANING

Call now on

01304 241235

07855385618

T. PETTMAN

Clockmaker
Horology Repairs
Specialist in Antique
Clock & Barometer
Restoration

01843 825050
mobile 07860 498963

Sew Essential

THE RESA

The Sewing Lady

For all your sewing needs

Alterations & Repairs

Curtains and
soft furnishings

EXPRESS
SERVICE



sew.essential1@yahoo.co.uk

07716304816



LYDDEN LIFTS

Stairlift Enquiries:-

Mr J.V. Glass

Home: 01304 825534

Mobile: 07845 299 408

Office: 0800 016 9253

Email: lyddenlifts@hotmail.co.uk

Hillview, 70 Canterbury Rd, Lydden, Dover, Kent. CT15 7ES

YOUR LOCAL INDEPENDENT FAMILY OWNED FUNERAL SERVICE

SULLIVAN & SON

- * Recommended by the Good Funeral Guide
- * Recommended by the Natural Death Centre
- * Funeral Contractor to Dover District Council

Instant estimate available here:

www.sullivanandson.co.uk

24 HOUR PERSONAL SERVICE:-

01304 201322

12 Beaconsfield Road, Dover, CT162LL



**Golden Leaves
Funeral Plans**



Temple Ewell Baptist Church

(Part of the Baptist Family in Dover)

IT HAS ARRIVED?

It is thrilling to see the St.James development taking shape between Townwall Steet and Castle Street in Dover. For years we have been waiting and hoping but nothing seemed to happen. The desolation of Burlington House seemed to be a permanency and any change appeared to be a pipe dream. We had the promise but could anything good happen in Dover?

The same processes were in operation long ago when hope of real change was promised. The coming of Jesus was predicted from long ago and many had given up expecting it to happen. When he did come they said "can any good thing come out of Nazareth?" He did come, he did bring renewal and fulfilment of the promise. "To YOU is born this day in the city of David, a Saviour who is Christ The Lord" (Luke's Gospel chapter 2).

We all wish the St.James development well, and trust it will also full fill its promise.

Our activities continue as usual:

Sunday Family Service: 10.30am

Monday Keep Fit: 7.30pm

Wednesday Bible Study and Prayer: 7pm

Future Events



Sunday 12th November 4-6pm. This is for children and adults and comprises about 1 hour of craft activities, 10 minute Bible based talk, a full cooked meal. We will be thinking about "Finding Treasure" All are welcome.

CHRISTMAS CAROLS by CANDLELIGHT on Sunday 17th December at 6.00pm
CHRISTMAS DAY CELEBRATION at 9.30am.

***If we can help in any way please do not hesitate to contact June on 822982
Jack on 825150 or our minister Ewart Graham on 375823.***

www.temple-ewell-baptist.co.uk



Temple Ewell Players



The Junior
Players
presented ...

BUGSY
MALONE





And it
was ...

A Rip-roaring,
Splurge-tastic
Success!



*All photos
courtesy of
Weng Lim*

GUESS THE SHOW!

These two pictures are from one of our old shows - did you see it? Do you remember when and what it was? The answers are on page 33.



Friday Club

It is with great sadness that Jean Fowler, a long standing member of our Club, passed away peacefully on Monday 9th October. Jean was for many years our Chairperson and later became an active committee member of the Club until illness took over. We would

like to send our condolences to her family at this very sad time. R.I.P Jean, you will be greatly missed.

October saw one of our members Ken reach the good age of 70 (*young*) we toasted his health with bubbly and cake. Later in November Vera Clarke will celebrate her 90th birthday and I am sure this will call for another party. A very happy birthday to all those celebrating birthdays soon.

Clocks will have gone back by the time this reaches your homes so a reminder to stay safe and make sure all windows and doors are locked when going out. It's always a good idea to leave a light on and perhaps music to ward off any unwanted visitors whilst you are out.

We are fast approaching Christmas and plans are already in place for Friday Club's celebrations - so watch this space. Stay safe and warm in the coming months.

Until next time

Bye for now Yvonne



W. J. Farrier & Son Ltd

Independent Family Funeral Directors

Since 1948



**PERSONAL 24-HOUR SERVICE
PRIVATE CHAPELS OF REST
TRADITIONAL, BESPOKE & ALTERNATIVE FUNERALS
CREMATIONS & BURIALS
ECO-FRIENDLY FUNERALS
INTERNATIONAL REPATRIATION**

Golden Charter 
Smart Planning for Later Life

Pre-paid Funeral Plans

Award Winners - 2007,2009,2010,2011,2013 & 2015

01304 201665

161 London Road
Dover, Kent
CT17 0TG



01303 245500

37 Bouverie Road West
Folkestone, Kent
CT20 2SZ

A personal service from your local Independent Family Funeral Directors

www.wjfarrierandson.co.uk



Produce Association

Our last meeting of the year was our A.G.M. held in the lower Village hall on Monday the 23rd October.

So, as the new season starts, we have the Committee in place, hopefully with some new members.

Dates for shows are;

Coffee Morning 10th February 2018,

Spring Show 31st March 2018,

Summer Show 14th July 2018,

Autumn Show 15th September 2018

A.G.M.all to be confirmed.

We shall have a coach trip, run by Carol and Daphne. More information will be available at the Coffee Morning.

Autumn Show 9th September 2017 - Cups & Results:

Bailey cup most points in show Trevor Barlow.

Anne Browne Memorial Cup; most points in section B(Vegetables) Graham Kemp.

Alice Saunders Cup:Best exhibit of shallots in class 15(section B) Trevor Barlow.

Arthur Holliman Cup:

Best exhibit in section B Pauline Filbey. Hetty Dyer Cup:

Best exhibit in class 27 Decorative Dahlia Trevor Barlow. Kate Terry Shield

Best exhibit in class 38 Colin Smithen: Delia Baldwin Memorial Cup:

Most points in floral art Rita Gibson:

Rosette for best in show children's Delphi Price:

Green Finger Shield Sunflower head Children's Nicole Adams:Percy Parks

Memorial Shield Best allotment Alan Bugden:

Best Small allotment Rosemary Halfpenny:

Frank Pain Memorial Cup most aggregate points in section B Graham Kemp:

Cookery Cup Most aggregate points in section E Linda Williams:

Children's Cup Most aggregate points in section F Delphi Price.

We would like to thank all the people who exhibited in our shows this year, without them we would have no shows.

Thanks also to all our members and friends who have supported us throughout the year.

Regards, Trevor

Dover & Deal Sea Cadets meet at their headquarters, TS LYNX, in Upper Road, Dover (behind the castle) Monday and Thursday evenings from 6.45 - 9pm.

If you are a girl or boy aged over 10 (or a parent / carer) and would like to find out more about what we do, call in any Monday or Thursday evening or ring us on 01304 219810.

www.sea-cadets.org/



Being a Sea Cadet helps you develop
SELF-CONFIDENCE

Learn to believe in your own abilities, qualities and judgement and you'll be surprised how much you grow.

**SEA
CADETS**

Dover Letting Agency

Home in on us for all your letting needs

- Tenant Find Only
- Fully Managed
- Reduced Commission on Property Transfers
 - Guaranteed Rents & Legal Protection
- FREE Client Money Protection Insurance

**01304 268101 - www.doverlettingagency.co.uk
info@doverlettingagency.co.uk**



2 Cherry Tree Avenue Dover Kent CT16 2NL



Lornas Barber
closed mondays
open all day tues,thur, fri
wed 9am-12pm sat 8.30am-3pm
phone 07776116865
2 high street, temple ewell ct16 3du



C D WOODWARD A.I.P.

PLUMBING & HEATING ENGINEER

Repairs, Maintenance, Installation & Gas Servicing

100 Canterbury Road, Lydden, Dover, Kent. CT15 7ET



Home/fax: 01304 831345

Mobile: 07850 579303



Charles A Lynch RIBA

Chartered Architect - Temple Ewell

Design & Planning Service

Free no obligation consultation

Discuss your ideas and explore some options

t: 01304 332 355 m: 0797 494 2364 charles@caldesign.co.uk

www.caldesign.co.uk



Scout Hut at River

Friday - Beavers 4-30 to 5-30pm

Tuesday - Cubs 6-30 to 8-30pm

Monday - Scouts 6-30 to 8-30pm





Temple Ewell Parish Council



Sunday 3rd December

Come along and see the



CHRISTMAS LIGHTS

Switch on

5.30-6.30pm Players Corner

Christmas sing along, Father Christmas

Free Refreshments



The full Parish Council meets on the last Tuesday of the month (excluding August and December) at 7.15pm at the Temple Ewell Baptist Church Hall on the corner of the High Street and London Road. Parishioners are most welcome to attend and contribute to meetings.

The agenda and minutes are displayed on the Parish Council notice board by Southdown Stores and on the Council website. Should you wish to put anything on the notice board please contact either the Clerk or the Chairman.

Contact details for councillors are on the website:

www.templeewellpc.kentparishes.gov.co.uk

**Mrs. Jane Coulson-Wright, Temple Ewell Parish Council,
5 Dour Side, River, Dover, CT17 0UX coulsonwright@aol.com**

Restaurant Review

THE CIDER WORKS

(formerly 'High & Dry')

Sandwich Road Waldershare



I have been to this restaurant on numerous occasions. The staff are very friendly, welcoming and helpful. There is a healthy menu from which to choose a sumptuous range of food that is prepared and cooked on the premises. Closed on

Mondays, breakfasts are served on Fridays, Saturdays and Sundays with lunches served every day.

Dinner is available on Saturdays and due to high demand we find we needed to book this in advance. There is, of course, a range of Ciders to purchase made and processed from their own orchard. These are very popular and delicious. Cider Works will also provide a 'Hog Roast' for outside events.

We highly recommend this venue which we visit often especially for breakfast!

'Spud' Taylor

The Firework Code

- **Keep fireworks in a closed box**
- **Follow the instructions for lighting them very carefully**
- **Light them at arm's length**
- **Stand well back**
- **Never go back to a lit firework**
- **Never put fireworks in your pocket**
- **Never throw fireworks**

MARK WALTON

Cranbrook, Dover Road, Guston

Tel: 01304 219886

Mobile: 07970 745272

BRICKWORK CONTRACTOR & BUILDER

Re-pointing
Driveways

New buildings
Block-paving

Alterations
Conservatories

Extensions
Patios

Brabourne Gardening Services

Lawns mown • Edged •
Dressed • Scarified
Hedges cut • Trees pruned •
Shrubs tidied
Fencing and Patios

Weekly or Fortnightly Visits
One off clearances
Small removals undertaken

Call Dennis Brown
Tel: 01304 829712
For Free no obligation estimate



ATTENTION LANDLORDS & PROPERTY OWNERS

Looking to rent out your property in the village?

We are always in need of good quality properties for our professional clients in the local area. We fully reference all applicants.

Thinking of buying a property as an investment?
Free advice given

For further information contact:
Karen Southon at

Kearsney Property Services

Relocation | Property Management | Lettings and
Investment



Tel: 01304 825153

Email: Office@kearsneypropertyservices.co.uk

E.J. Ditton & Co.Ltd ELECTRICAL CONTRACTORS

All electrical work undertaken
Free, no-obligation quotations

sales@ejditton.co.uk

01304 205141

www.ejditton.co.uk



National Inspection Council for
Electrical Installation Contracting



REGISTERED MEMBER





Letters to the Editor

We would like to hear from you. What do you want information on? Need help with something? Want to comment on a local issue? This is the place to do it! Send to the Editor - details on page 3

I received the following email recently:

Hello

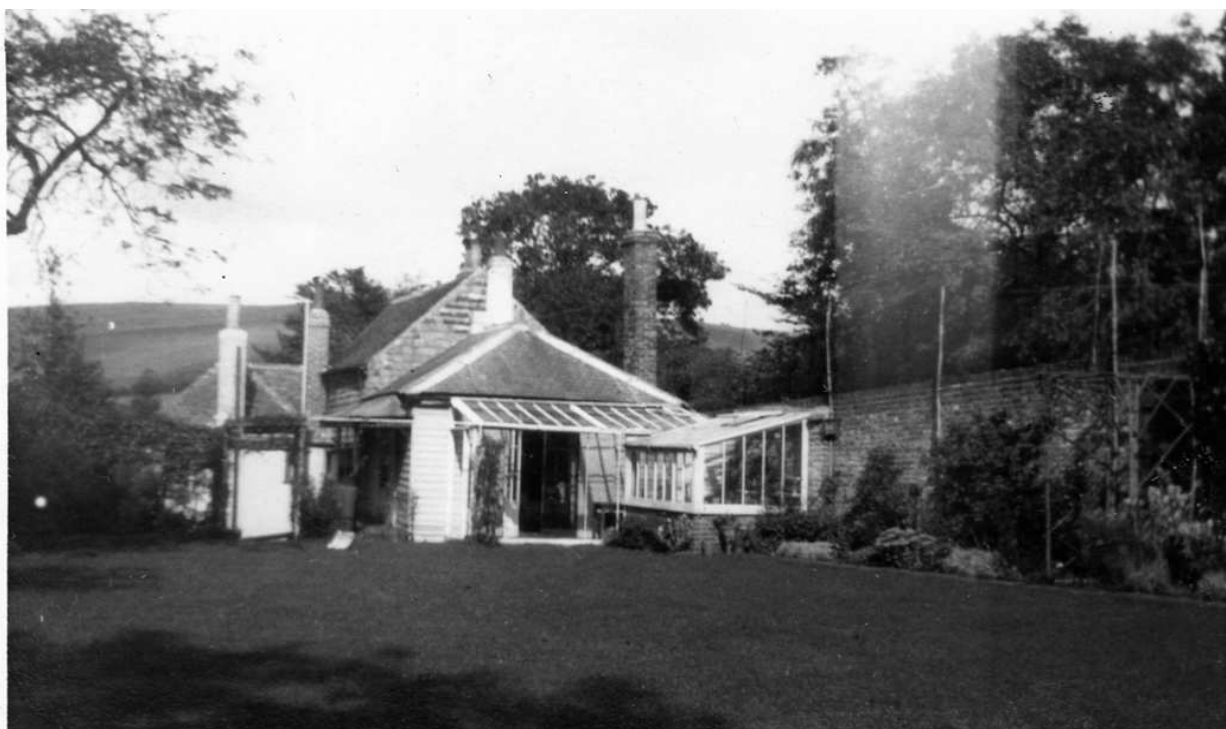
Apologies to write 'out of the blue' but I have a conundrum that requires solving!

I live at Plymtree in East Devon and a neighbouring village is Clyst Hydon. I collect old postcards of the villages local to me. The attached card has Clyst Hydon written on the reverse in pencil which prompted me to purchase it. However, Temple Ewell is also notated. I have friends in Clyst Hydon and they can't locate this property there. So the question is whether the property in the photo is located at Temple Ewell.

Can you please assist in my quest?

Kind regards

Will



I wasn't sure, but thought it looked like Milestone House, although of course the name was different. As it happened, purely by coincidence, I had been given an old article from the Lyte magazine (for those of you who don't know, that was the old church magazine for Lydden and Temple Ewell) for publication as a historical piece and this article actually mentions the house and says it's old name, so I was right. I duly notified Will and sent him a copy - another satisfied customer!

The article itself follows

Nostalgia

Piece written in 1998 for the old Lyte Magazine
by Mrs Joan Sampson

I can still walk up Green Lane as I used to 65 years ago, but I miss the wonderful smell of humbugs and Margate rock coming from a little shed attached to the cottage of the Wilkins family! I would stand and watch the rock being rolled and maybe even be given a piece to take home to the house next door, 'Ocala', now The Rectory for Temple Ewell and Lydden.

My step father, a Trinity House pilot named Denton, had the house built in the early 1930s and the garden stretched right up to the lane at the back - no houses up there in those days! Mr Wilkins eventually had a house built between his cottage and 'Ocala'. I remember the Wilkins children well, especially Billy and Ronnie who used to come and help my mother sterilise the greenhouse and masses of flower pots! Walking up the lane we could get into the wood at the top and picnic in the corn field; there were lots of spindleberry trees which we used to raid.

The biggest change in Green Lane to me is the disappearance of the little cottage between Green Lane and the narrow lane leading down to the village. It was the Rogers' cottage - Bertha, who taught at the village school, and Eleanor, the dress-maker who made many cotton frocks for me, and Harry, the woodworker.

That narrow lane down to the village was open for cars in those days! No handrail at the bottom or barrier and no entrance to back of the house now called 'Milestone House'; the only entrance was on the main road and the house was then called 'Clyst Hydn'.

At the bottom of the lane there was a terrace of little shops - Bensteads for shoe repairs, a shop for nuts and bolts, nails etc. (Woods) and Mrs Bushell's most useful drapers shop. But the shop I loved most was the smallest of all - Ruby Pennock's (Mrs Clements') greengrocery on the corner opposite - there were several steps down to go in and then an Aladdin's Cave of goodies!! I have a painting of the shop by Mrs Dorothy Mowll (wife of A.K. Mowll) and it has pride of place, framed, on my study wall.

I visited Mrs Clements at Whitfield once or twice after I came to live in Barfreyston and in 1973 she manned a stall for me at the first Christmas Sale for M.A.F. (Mission Aviation Fellowship) in my cottage. We raised £60 on the day. It is now an annual event on the 3rd saturday in November and last year the total reached was £1653!

In 1931 or 32 Miss Kennett bought 'Sunnybank' (next to the George and Dragon) and opened a small private boarding school for juniors, calling it 'St Michaels'. As a school girl I helped in the DIY efforts of knocking up shoe boxes and coat hooks etc. as cash was scarce! Many years later when the Misses Falloon gave

up their school 'Coolderry' (opposite the Village Hall) Miss Kennett took it over and moved from Sunnybank and 'Coolderry' became St Michaels. When she retired Miss Kennett returned to her cottage in Barfreyston where she died in 1979 - on the day commemorating St Michael and All Angels!

So many names come flooding back when I think of Temple Ewell - Mrs Wright, the School Caretaker, Eileen File who worked for the Council when the Target First estate was built. I knew her as Eileen Broadley; we were at school together in Dover with her youngest sister Beryl, who I believe married and lived in Temple Ewell for some time at the Post Office. Then Mr and Mrs Hall at Ivy Bank, the Morrells, the Youngs, the Bradbeers, the Browns, the Robinsons at Stalisfield Lodge, the Misses Mary and Lucy Walters, whose brother, a retired Roman Catholic priest, was known to us all as Father Jim.

I came home one day to find my mother in tears. She told me that Mary, a pretty girl who worked for her, had just been killed on the village hill by a runaway lorry. But she had managed to throw her pram to safety into the garden of Higham Villa, thus saving her baby. I believe Mary's name was really Betty but she asked us to call her Mary as she preferred it.

Thinking of the Church itself, I shall always remember the Reverend F. E. A. Williams who prepared me for confirmation together with my schoolfriends Freda Stone and Betty Bigg. When I was asked if there was any work I would like to undertake for the Church I replied that I would help with the Sunday School, because I didn't think that I would enjoy it very much! Sunday School, numbering about 30 as I remember, met in the afternoons in the Village Hall and I was given the juniors. I remained there for about two years.

Remembrance Day was always very special as we always had a young trumpeter from the Duke of York's Royal Military School for a service at the War Memorial, always at 11am on the 11th day. The parish was then coupled with River and Guston (where there was a curate). Our Curate was a Reverend Drake-Brockman.

One usual task I used to enjoy doing in the Church - cleaning the Sanctuary tiles with milk! Mrs Morrell assured me it was very beneficial.

This has all been about my teenage years, but I am now 81 and thoroughly enjoy joining in the Thursday Coffee Breaks in your Village Hall.

Guess the Show - it was Babes in the Wood in 1995

Home Hairdressing Services

Call Sue on 07795 362812 *Fully Insured*

Wet cut and blow dry from £20

Wet cut from £14

Child's cut (up to 10 yrs) £7

Full head colour from £20

Highlights / lowlights from £20

Permanent wave from £23



All colours require a skin test
before appointment.

Quality L'Oreal Majirel Colours

NHF + City & Guilds Qualified

Working hours are 9am - 2pm Monday to Friday School Term Times Only

Experienced Maths and 11+ Tutor

Qualified Maths teacher for 20 years

Able to teach Maths at KS2, KS3 GCSE and A 'level

Enhanced DBS (CRB)

Call, email or visit my website: Sue Corlett

Phone: 01304 824437/07943533356

Email: suecorlett92@gmail.com

Website: www.corlettutoring.co.uk

Kearsney Manor Nursing Home

ALKHAM VALLEY ROAD

KEARSNEY DOVER CT16 3EQ

Tel: 01304 822 135

www.kearsneymanor.co.uk

Owned by the Sisters of the Christian Retreat

We aim to provide a high standard of care for the elderly and
convalescent patients

State Registered Nurses on duty at all times.



County Councillor

Health chiefs are urging people in Kent to protect themselves and their families from the flu virus this winter.

Some people are more susceptible to the effects of this highly infectious disease. For them, it can increase the risk of developing more serious illnesses such as bronchitis and pneumonia, or can make existing conditions worse. In the worst cases, flu can result in a stay in hospital, or even death.

Flu is caused by influenza viruses that infect the windpipe and lungs. And because it's caused by viruses and not bacteria, antibiotics won't treat it. If, however, there are complications from getting flu, antibiotics may be needed.

The most common symptoms of flu are fever, chills, headache, aches and pains in the joints and muscles, and extreme tiredness. A bad bout of flu can be much worse than a heavy cold.

When an infected person coughs or sneezes, they spread the flu virus in tiny droplets of saliva over a wide area. These droplets can then be breathed in by other people or they can be picked up by touching surfaces where the droplets have landed. You can prevent the spread of the virus by covering your mouth and nose when you cough or sneeze, and you can wash your hands frequently or use hand gels to reduce the risk of picking up the virus.

But the best way to avoid catching and spreading flu is by having the vaccination before the flu season starts.

It is not possible to predict fully the strains of flu that will circulate each year, and there is always a risk of a change in the virus. The most likely viruses that will cause flu each year are identified in advance of the flu season in the UK; and vaccines are then made to match them as closely as possible. The vaccines are given in the autumn ideally before flu starts circulating.

Flu vaccines protect against the main three or four types of flu virus most likely to be circulating. It can affect anyone but if you also suffer with other health issues the effects of flu can make it worse, even if your existing condition is well managed and you normally feel well.

The free flu vaccine is available to anyone who is over the age of 65, pregnant; or has certain medical conditions. People receiving a carer's allowance, or are the main carer for an elderly or disabled person are also eligible.

This year children aged 2 and 3 years, or in school years Reception, one, two, three, and four are eligible for a child-friendly nasal spray flu vaccine.

Dr John Rodriguez, Public Health Screening and Immunisation lead for Kent and Medway said: "The flu virus is easily spread within communities. It can be very unpleasant; especially for pregnant women and anyone who suffers with another illness like diabetes, asthma, COPD, heart disease or kidney disease.

"People whose immunity is lowered due to disease or treatment, such as steroid medication or cancer treatment are also at increased risk and should have the flu vaccine as soon as possible. We are keen to ensure all people are vaccinated, but especially those who are at greater risk in the groups already mentioned. "Every year we see people badly affected by flu and some people die. My message to you is to please take the time to protect yourselves. "

"Certain groups in our community - particularly the young, the elderly and those with co-existing illness - are extremely vulnerable, and for some it can even prove fatal. Our health partners across Kent are already warning of potential major demands on their services this winter and we are fully behind the NHS 'Stay Well This Winter' campaign by strongly urging those who are eligible for the flu vaccine to get it now as clearly they will need it."

Please note:-

1. The flu vaccine for each winter helps provide protection against the strains of flu that are likely to be present and may be different from last year's. For this reason we strongly recommend that even if patients were vaccinated last year, they should be vaccinated again this year. In addition protection from the flu vaccine may only last about six months so you should have the flu vaccine each flu season.
2. Many GP Practices hold large flu vaccination clinics. It is best to find out dates and times by checking on Practice websites or by telephoning the Practice direct.
3. Participating community pharmacies also offer a service for patients who are eligible for a FREE Flu Vaccine. If you have the vaccination in a pharmacy they will take your details and let your GP Practice know that you have had the vaccination.

Geoffrey Lymer
Kent County Councillor
Dover West Ward



Temple Ewell

Church of England Primary School

Our 2018 Reception class Open Morning will be held on Thursday 16th November 2017 at 9.15 or 10.30am.

please call the school office on 01304 822665 to book your place.

Our school sits in an idyllic location, nestled in a picturesque valley on the outskirts of the historic port of Dover. We are a popular and friendly school at the heart of the village and make every effort to involve the entire community in all that we do.

Please contact Mrs Cock in the school office with any enquiries you may have or if you require paper copies of any information on our website.

The Temple Ewell Newsletter Prize for Citizenship

This year, Erica Garcia was awarded the Citizenship Prize at the end of the academic year. She has been involved in many activities representing our school and been an active member of our village community.

Erica has been in numerous productions, taking on varying roles of difficulty with confidence and enthusiasm. This is typical of Erica - always giving 100% effort in all that she participates in.

Erica has enjoyed taking on different roles of leadership in school, she enjoyed being an Active Playleader and she excelled in looking after the younger children. She has always been able to offer suggestions and ideas when planning different activities to make break and lunchtimes more enjoyable for everyone.

She is a kind girl and has been a pleasure to teach.



Respectful, honest and caring dentistry from a long established private practice with the best of modern dental advances.

Ages 0 -100 years old (and more) welcome!

"Not at all anxious" to "Been dreading this for years" absolutely welcome.

**Dr Dorothy Riley and her team
look forward to welcoming you!**

www.doverpriorydental.com

**3 Priory Road, Dover, CT17 9RQ
01304206558**



A local business catering for all your household electrical requirements including;

- ✓ Circuit repairs & Re-wires
- ✓ Fuse Board Replacements
- ✓ Outside Power & Lighting
- ✓ Fire & Security Alarms

Work fully guaranteed with additional protection provided to Homeowners under the NICEIC's warranty scheme for extra peace of mind.

Call us today to arrange a free estimate and pre-work survey.

Tel: 01304 823028 / 07984 453326

info@mwlelectrical.co.uk

Quality Service

Quality Workmanship

Quality Aftercare



KITCHEN DESIGN AND INSTALLATION

Working with you to create a space that compliments your home, lifestyle and budget.

Quality and flexibility are central to our approach and we provide a number of options and benefits;

- ✓ Installation Only or Full Design, Supply & Installation Service
- ✓ Comprehensive Service Including Electrics, Plumbing & Appliance Installation
- ✓ Optional Decoration & Tiling Service
- ✓ Outstanding Value For Money

Call us today to arrange a free, no obligation survey and quotation.

Tel: 01304 823028 / 07984 453326

info@mwlelectrical.co.uk

Quality Service

Quality Workmanship

Quality Aftercare

Useful Telephone Numbers

Lydden Surgery	832160
NHS Out of hours medical service	111
Dover Health Centre	865500
Buckland Hospital	222510
Canterbury Hospital	01227 766877
William Harvey Hospital	01233 633331
Queen Elizabeth the Queen Mother Hospital	01843 225544
Dover District Council	821199
KCC Highways to report faults with roads/streetlights etc	03000 418181
Citizens Advice Bureau	03448 487978
Dover Library	204241
Dover Leisure Centre	201145
Stagecoach Dover	08456 00 22 99
Tourist Information	205108
Late Night Chemist Tesco Whitfield (open till 8pm)	867547
PCSO May	07772 226209
Dover Community Safety Unit	872220
Police Fire Ambulance - Emergencies	999
Police - to report a suspicious event	101
Police - to report a crime where the offenders have left	101
Social Services	03000 414141
Crimestoppers	0800 555111
Gas Emergency	0800 111999
Electricity Emergency and Power Failure	0800 783 8866
Water Supply Emergency	0845 888 5 888
Waste Water Emergency	0845 278 0845
Childline	0800 1111
The Samaritans	116 123
Post Office Customer Services	0845 7740 740
Dover Community Radio	744177

The Temple Ewell Newsletter is published monthly in the interest of greater unity within the community. It is distributed free of charge. Editorially it aims to be free from political, sectarian and institutional bias and seeking neither to be divisive nor controversial, it does not support or oppose any cause. The appearance of an advertisement in this Newsletter does not mean that we endorse the advertiser's goods or services. While we will not knowingly run an advert that is untrue, The Newsletter is not responsible for the accuracy of any advertising material or the usefulness of an advertised product or service.