

tenews.co.uk

Temple Ewell Newsletter



Temple Ewell Organisations

Parish Council Chairman	Mr C Smithen	332139
Clerk to the Parish Council	Mrs J Coulson-Wright	820273
District & County Councillor	Geoffrey Lymer	07960 490929
Police Community Support Officer	Gretel May	07772 226209
T E School Executive Head Teacher	Mrs Jo Hygate	822665
Friends of TE School (Sec - Amanda Stone)	friendsoftheschool@fsmail.net	
Sunday Club	Mrs J Miles	824280
Friday Club	Yvonne Sacker	330017
Art Workshop	Antionette Tourret	826292
DDWF	Mrs J Fowler	822792
Age Concern	Mrs K Green	207268
Brownies	Mrs A Newington	827138
Community Coffee Mornings	Mrs J Miles	824280
WI	Jan Luckhurst	331051
Produce Association	Trevor Barlow	824787
Temple Ewell Players	Mr M Brodie	824400
Men's Club	Mr A Ladbroke	824948
Village Hall Bookings/Enquiries	John Holness	448140
Youth Club	Marilyn Holness	448140
Tiddlers	Amanda Lomas	07506 811851
Wednesday Club	Marilyn	448140
	Trish	820966

St. Peter and St. Paul Temple Ewell

Rev Fr Paul Christian The Rectory Green Lane Temple Ewell 822865
Church Wardens - Mr P Austen 820615 Mrs E Waller 824709
PCC Secretary - Mrs C Roberts 822850
PCC Treasurer - Mrs C Spink 824575
Choir Master - R Christian 826320

Baptist Church

Rev Ewart Graham on 375823 or Pat Clipsham on 827341

Temple Ewell Newsletter Editorial Committee

Chair / Secretary	Jacqui Axford	330073
Treasurer / Editor / Web	Jeanette Potts	826386
Vice Chair	Jenny Olpin	825011
Distribution	Jenny Miles	824280
Members	Cindy Tuson	823325
	Ian Dean	823184
	Maureen Smith	824532

Happy Valentine's day

Hello Everyone

Well here we are in 2015 and Christmas seems ages ago. I guess all the various organisations are, like the Newsletter Committee, planning their fundraising events for the year ahead.

At the Newsletter we have one event booked already for later in the year. It's going to be a Barn Dance on 6th June, so put that in your diaries - should be a fun-filled evening. Don't worry if you can't dance, the entertainment we've booked will be great!

Jeanette Potts

Email: tenews@uwclub.net Tel: 01304 826386

Address: Edenvale 1B Byllan Rd River CT17 0QL

We welcome all contributions to the content of the Newsletter, but please remember that the deadline date is 8pm on the 15th of the month.

NOTE: You should be aware that articles are also published on the website www.tenews.co.uk - please inform us if you want any part of your article withheld from that particular medium.



A copy of every Newsletter is posted on the website, including the village diary. Make sure you log on to www.tenews.co.uk

tenews.co.uk
Temple Ewell Newsletter



PCSO GRETTEL MAY

I can be contacted on **07772 226209** for any issues that you'd like to discuss with me. My next surgery at the Coffee Morning is on Thursday 5th March. **Gretel.**





Village Diary 2015

February

Thurs 5	Coffee Morning at the Village Hall
Sat 7	Produce Association Coffee Morning 10am -12noon in the Village Hall - Schedules will be available
Tues 17	Pancake Tossing Races and Eating! 10.30am in the Village Hall See ad page 25
Thurs 19	Coffee Morning at the Village Hall
Fri 20	Wine & Wisdom in the Village Hall 7 for 7.30pm - see ad page 21.
Tues 24	Parish Council Meeting in the Baptist Chapel Hall 7.15pm

March

Thurs 5	Coffee Morning and PCSO Surgery at the Village Hall
Thurs 19	Coffee Morning at the Village Hall
Sat 28	Produce Association 50th Spring Show 2pm in the Village Hall
Tues 31	Parish Council Meeting in the Baptist Chapel Hall 7.15pm

April

Thurs 2	Coffee Morning and PCSO Surgery at the Village Hall
Fri 3	GOOD FRIDAY
Mon 6	EASTER MONDAY
Thurs 16	Coffee Morning at the Village Hall
Tues 28	Parish Council Meeting in the Baptist Chapel Hall 7.15pm
Thurs 30	Coffee Morning at the Village Hall

May

Mon 4	BANK HOLIDAY
Thurs 14	Coffee Morning and PCSO Surgery at the Village Hall
Mon 25	BANK HOLIDAY
Tues 26	Parish Council Meeting in the Baptist Chapel Hall 7.15pm
Thurs 28	Coffee Morning at the Village Hall

June

Sat 6	Newsletter Barn Dance in the Village Hall 7.30pm
Thurs 11	Coffee Morning at the Village Hall
Thurs 25	Coffee Morning and PCSO Surgery at the Village Hall
Tues 30	Parish Council Meeting in the Baptist Chapel Hall 7.15pm

July

Thurs 9	Coffee Morning at the Village Hall
Sat 18	Produce Association Summer Show 2pm in the Village Hall
Thurs 23	Coffee Morning and PCSO Surgery at the Village Hall
Tues 28	Parish Council Meeting in the Baptist Chapel Hall 7.15pm

August

Thurs 6	Coffee Morning at the Village Hall
Thurs 20	Coffee Morning at the Village Hall
Mon 31	BANK HOLIDAY

September

Thurs 3	Coffee Morning at the Village Hall
Thurs 17	Coffee Morning at the Village Hall
Sat 19	Produce Association Autumn Show 2pm in the Village Hall

October

Thurs 1	Coffee Morning and PCSO Surgery at the Village Hall
Thurs 15	Coffee Morning at the Village Hall
Mon 26	Produce Association AGM 7.30pm in the Village Hall
Tues 27	Parish Council Meeting in the Baptist Chapel Hall 7.15pm
Thurs 29	Coffee Morning and PCSO Surgery at the Village Hall

November

Thurs 12	Coffee Morning at the Village Hall
Tues 24	Parish Council Meeting in the Baptist Chapel Hall 7.15pm
Thurs 26	Coffee Morning at the Village Hall

December

Thurs 10	Coffee Morning and PCSO Surgery at the Village Hall
Fri 25	CHRISTMAS DAY
Sat 26	BOXING DAY
Mon 27	BANK HOLIDAY

Our time is brief, and it will pass no matter what we do. So let us have purpose in spending it. Let us spend it so that our time matters to each of us, and matters to all those whose lives we touch.

The Time Paradox: The New Psychology of Time That Will Change Your Life
PHILIP ZIMBARDO



Temple Ewell Players

Nautical greetings!

As you read this, The Players will have just finished this year's Pantomime 'The Little Mermaid', directed and produced by Tonia Watts.

The show has been a colourful extravaganza of fun, with the cast and crew working extremely hard to bring the underwater world to life. Thank you to everyone concerned for their involvement in this wonderful show.

Looking ever forward, our Spring Production will be 'Waiting in the Wings' a play directed by Ann Hogban, about which more details will be in the next Newsletter.

Finally, we always welcome new members whether it be on stage or behind the scenes. We are currently looking for anyone with lighting skills or who would like to learn.

For more details about us or to get in touch visit our website www.templewellplayers.co.uk or via our chairman Mike Brodie on 01304 824400.

Rachel



Friday Club

HAPPY NEW YEAR TO YOU ALL - I hope you all had a nice Christmas although many have had this virus that's going around, including me, and it really knocks you for six. So, a speedy recovery to all who have suffered.

At the Friday Club we are busy arranging our future events for the next six months, and I will keep you posted.

If you or your friends would like to join us on a Friday afternoon from 2 - 4.15 you would be made most welcome or if you are passing and fancy a cup of tea/coffee during these times please call in.

Hopefully we can now look forward to lighter evenings and very soon warmer weather too.

So, for now, wrap up warm, take care and keep safe.

Yvonne

Village Walk

This year it was agreed that the village walk, organised by the Parish Council to ensure that our Rights of Way (RoW) remain accessible, would be at Christmas. By changing the walk to the different seasons enables not only the appreciation of the variable flora and fauna but also the problems and benefits of the season in providing access.

13th December proved to be fine and clear, but VERY muddy. Several adults and children gathered at the lower Village Hall with the adult group heading southwards towards the Minnis and the family group northwards up into Dragon Wood.

Up on the Minnis, via Church Hill, where ER129/126/180 merge, it soon became apparent that knee deep ruts rendered the path inaccessible and alternative pathways had emerged. Signposts had been moved and one stile disappeared into a mass of brambles. The group continued on along the ER126 and took a right turn to take a long walk, with beautiful views, drifting down into Great Watersend Farm. Here care is needed as the RoW tracks through the centre of this busy farm.

The family group had enjoyed close study of the winter landscape on ER128 and were the first to return to the Village Hall to the warm reception of tea and cakes provided by Temple Ewell Women's Institutue.

Reports of the problems encountered on ER129/126 have been lodged with Kent County Council. Should any of you, when walking our RoW and Byways, encounter a problem, then do please report via the KCC Web Site or email prow@kent.gov.uk .

Do join us in 2015!
Just look on the
Village Diary for
dates.

Jenny Olpin



ELY

DRIVING TUITION

20 years experience in Driver Training
500,000 miles covered and over 750 test passes

Contact **MALCOLM ELY**

07941 251718 - 01304 330453

www.elydrivingtuition.com

10% discount for Temple Ewell Residents*

***DISCOUNT BASED ON STANDARD HOURLY RATE**

THEORY - PRACTICAL - PLUS PASS - MOTORWAY - REFRESHER COURSES



Guitar Tuition

Enhanced CRB Check

Phone Steve 07792 349022

HarbouR
.....
Print & Signs

auto graphics • signs • printing

t. 01304 208732

www.harbourprint.com



PET PALS



Pet caring service.

Contact Ruth Burvill on (01304) 823790

**Pets cared
for in your
own home**

**Dog
Walking**

**Rabbit and
guinea pig
boarding**

T. PETTMAN

Clockmaker

Horology Repairs

**Specialist in Antique Clock &
Barometer Restoration**

01843 825050

mobile 07860 498963



**Home Improvements and Repairs
Reliable Service -Quality Work**

**For all your Building work,
Painting & Decorating, Tiling,
Kitchen & Bathroom fitting,
Drives, Patios, etc.**

Build it - Fix it - Finish it

for a free estimate contact Bob Potts on

01304 826386

info@rpotts.co.uk

www.rpotts.co.uk

Edenvale 1b Byllan Road River CT17 0QL

D. J. Plumbing Services

**ALL ASPECTS OF PLUMBING
WORK UNDERTAKEN**

- Ball valves to Bathrooms
- Taps to Tanks
- City & Guilds Qualified
- All Work Guaranteed
- All Jobs Covered
Big or Small
- Free Quotes
- No Call Out Charge
- Friendly & Reliable



Call Dave

01304 852439

07971 421766

Email: djplumbing123@Googlemail.com

Office: 29 Grantham Avenue, Deal

SPITFIRE



**TREE SURGERY
GARDEN MAINTENANCE**

**HEDGES AND
SITE CLEARANCE**

N.P.T.C. Registered

Fully Insured

Free Quotes

01304 241400

07789 160092



Willows

The Willows Christmas Dinner and Disco went very well. Everyone enjoyed a three course dinner followed by lots of dancing.



It's been a good start to the New Year and at the time of writing we are looking forward to the Players' Pantomime.

YOUTH
CLUB

Our term ended with all of us eating out at The Kittiwake. We had paid 50p a week, so on the night it was FREE!

We have a cinema trip coming up on Feb 1st and on Friday Feb 20th we will be holding a Wine and Wisdom evening to raise funds for our next Camber trip at the end of March - See our ad on page 21.

Sophie



Temple Ewell W.I.

At our January meeting we welcomed retired anesthetist, Dr Gehad Homsey, who gave us a very informative and moving insight into his voluntary work on 'Mercy Ships'. Dr Homsey accompanied his talk with slides. He explained that these hospital ships spend eight months of the year in port off the coast of Africa, providing free surgery and medical care for patients who attend from near and far. Medical staff treat a wide range of problems in their six operating theatres. During a typical eight month stay 67,000 procedures are carried out. All personnel on board - cleaners, cooks, engineers etc. are volunteers and all pay for their board and travel to the ship.

Our next meeting will be on February 12th when we will be playing short mat bowls and table games.



Brownies

Events from Oct to Dec 2014

Campfire - our Brownie Pack went to Whitfield Pack. First we played Parrots and Trees, then we went outside where it was getting dark, so Brown Owl lit a fire. We sat round the fire and sang songs, while we had marshmallows on sticks to toast on the fire and hot chocolate with mini-marshmallows in. By then the flames were really hot and the fire started to spit and burst a bit. At the end a new Whitfield Brownie was enrolled.

By Jessie and Nicole

Swimming Gala in November - Millie and I took part in the Swimming Gala at Dover Leisure Centre. We were in three races each. Millie did very well and came 2nd in the Freestyle race. I came 3rd in the Breaststroke.

By Erin

Tobogganing - on the 19th December we went to the Folkestone Leisure Centre with the 1st Whitfield Brownies. There were about 24 of us altogether and we had a great time in the giant tyre rings going down the slopes. The annoying thing was, you then had to drag it up the slope again! It was great when we all went down the slope together trying to hold hands.

At the end we had cake and sweets, as it was Jessie's birthday, and a party bag.

By Francesca

Brownies meet on Fridays 6-7.30pm at Temple Ewell Baptist Church.

If anyone would like to help, and is over 18, please phone Anne on 01304 827138 and she will be pleased to hear from you.



R.C. McDONALD

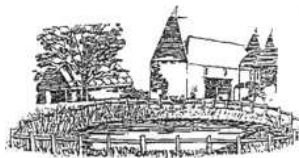
GENERAL BUILDERS



Your local Builder with over fifty years experience

**Extensions, Renovations, Alterations and General Maintenance,
Roofing, Painting & Decorating**

Tel: 01304 821139 or Mobile 07885 175683 for FREE Estimate



Mrs C Davies MA Ed NPQH
Head Teacher
Tel/Fax :- 01304 822887
www.lydden.kent.sch.uk

LYDDEN PRIMARY SCHOOL
STONEHALL, LYDDEN DOVER,
KENT
CT15 7LA

Email: headteacher@lydden.kent.sch.uk

**Are you looking for a good school?
Phone to arrange a visit to Lydden Primary School.**

We offer a small rural school with a good team of professionals and well behaved children. Children are good at caring for each other, learning is fun and each child is developed as an individual. We aim to equip children with essential skills that they can apply throughout their life.

OFSTED 2011 confirmed our ability to differentiate learning well for both age and ability. 'Pupils continue to make good progress through the school so that their attainment by the time they move to secondary school is generally above average'.

'There is a very positive engagement with parents and carers, with many commenting specifically on how well their child settled and is progressing'.

We have 'Share a class' sessions six times a year, where parents are invited in to learn alongside their children.

Luxury 2 bedroom Apartment for Rental

on an exclusive island within the Spanish
region of Murcia on the Costa Colida

Sleeps six - one double, one twin and sofa
bed, with dining set up for four people and
a good sized balcony with lake
and mountain views.



Golf course

The exceptional Alhama signature 18 hole par 72 course golf course was
designed by Jack Nicklaus for Polaris World and there's a lovely club house.

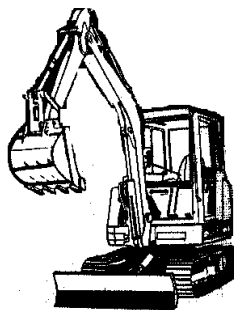
On Condado de Adlana

There are communal pools, a supermarket, bars and restaurants including
Bulgarian, American and Spanish, also gym, tennis, football and basketball.

It's just a 15 minutes drive to the port of Mazzaron with some lovely beaches
and the cost is just £200 + £50 for cleaning and Meet & Greet per week.

Contact Paul Chappell on

Tel 07824533550 / Paulchapp@hotmail.com / www.fairwaysmurcia.com



**T.R.M. GROUNDWORKS
&**

PENNOCK PLANT

**DRIVES LANDSCAPING FENCING
AND**

**ALL GENERAL GROUNDWORKS
TELEPHONE**

01304 830584 OR 01304 830876



Parish Church of St Peter & St Paul

**February services – to which we warmly welcome you.
Our Sunday Club meets every Sunday during term time
at 10.30am**

Sunday 1st	Parish Eucharist celebrating 'the Presentation of Christ in the Temple' (Candlemas) 10.30 am
Sunday 8th	Parish Eucharist 10.30 am Celebrant; Fr. Anthony Fletcher SSC
Sunday 15th	Parish Eucharist 10.30 am
Wednesday 18th	ASH WEDNESDAY (Lent begins) Holy Eucharist with Imposition of Ashes 10.00 am (OR St. Mary's Lydden 7.30 pm)
Saturday 21st	Holy Baptism of Finley Naylor 2.00 pm
Sunday 22nd	Parish Eucharist 10.30 am

**For times of the Daily Offices and midweek services, please refer
to the Church Notice Board.**

For just a while on New Year's Day I found myself feeling a little 'mowsh' (that's modern speak for emotional). Probably 'under-par' having struggled, with a voice like a strangled chicken, through all the Christmas services whilst suffering, with the majority of Temple Ewell and Lydden, the cold and cough virus (and with no Dean of Canterbury Cathedral to step in!), we took a couple of days break in Sussex.

Having seen the New Year in, we braved the cold wind to stroll with many others along Eastbourne's promenade, eventually joining the hundreds crowded in and around the Bandstand. The last time we saw a performance there our very own Le'arna was performing with the 'Swingtime Sweethearts' and they stole the show. But on New Year's Day, and as a few brave souls took a dip in the sea, a slightly ageing but brilliant rock band was performing and we joined the crowds as they boogied and jived.

After my late parents retired from South London to Sussex, they would come to the Bandstand on Boxing Day and dance around it to ballroom music. They loved it;

my mother in her hand-me-down fur coat from an elder sister and with rosy cheeks would glow afterwards, whilst father celebrated with a g & t. Perhaps it was memories of them and feeling them strangely close for a while that initially moved me, and it was great too to have those so special to me now sharing the present occasion. But at the end as we did a conga, put our 'backsides' in and shook them all about and sang 'Auld Lang Syne' with smiling, happy, complete strangers, there was a harmony and warmth and peace enviable in today's world and I was so grateful to have shared in it, and now share it with you.

Perhaps some of the 'mowsh' emanated from this too? After all, did not the Psalmist feel a similar blessing over 4,000 years ago when he said (Psalm 133) 'How wonderful it is, how pleasant, for people to live together in harmony' and he likened it to 'precious oil' and to 'dew falling on the hills...' So why not on Eastbourne's Bandstand too and as a New Year's blessing wished (belatedly) for those who live near the hills of Temple Ewell and Lydden.

Fr. Paul

<https://www.facebook.com/templeewellpepaul>



Sunday Club & Bubbles

Sadly numbers at the moment are rather low so please ring Jenny 824280 or Margaret 820615 if you are unsure of the dates we are meeting. We would of course welcome any youngsters who would care to join us for stories, craft and the learning of the basics of Jesus' love.

We so enjoyed our Christmas craft morning when we went home with lots of Christmas crafts. The collection this term is to support a needy donkey!

Church Baubles

Our thanks to everyone who remembered their loved ones on the Christmas tree and for their kind donations. It was a short dedication service that is sure to be repeated next year.

To the many children and friends who attended the always popular Christingle Service, our thanks for your kind donations which we were able to send to the Children's Society.

Art Exhibition



Our very popular Art Group gave their second exhibition of 2014 at Kearsney Bowls Club. This provided a peaceful setting for visitors to enjoy and study the various painting styles whilst enjoying light refreshments.

Exhibits included such styles as realism, impressionism, scenic, botanical and abstract. I particularly enjoyed the more tactile oils made even more attractive by their frameless presentation.

Temple Ewell Art Group will be presenting a Spring Show at the Crabble Corn Mill and I urge you to go and see the amazing art produced and, of course, to support our Art Group. You may even be tempted to join!

Jenny Olpin



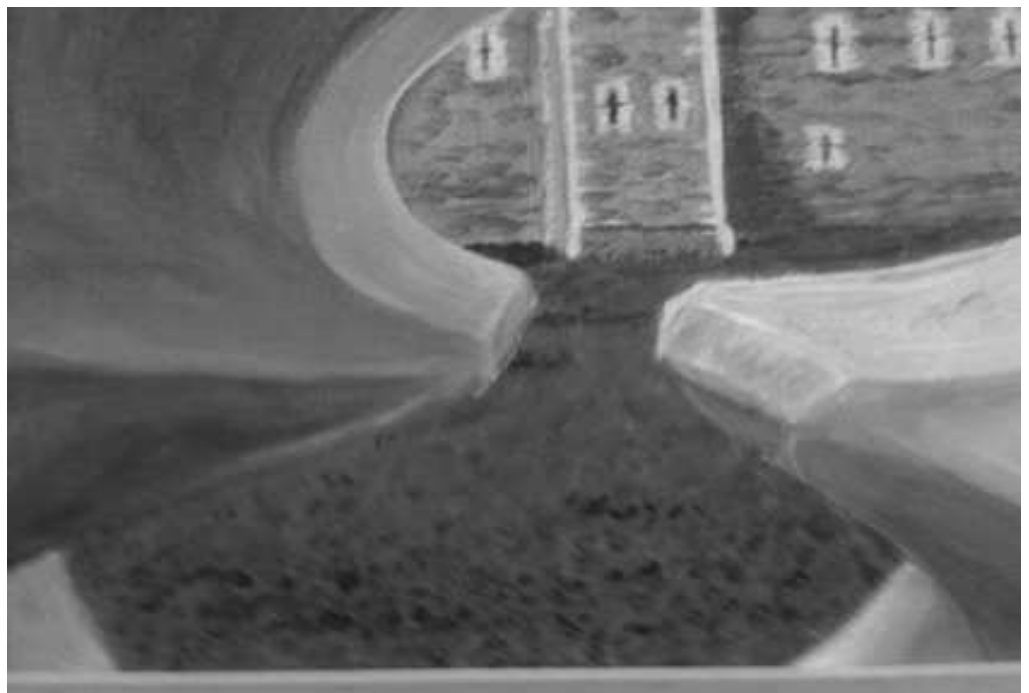
**'White Daisy' (below) by
Antoinette Touret**



'Seagull' and 'Carnation' by Ellen Fraser

'888,246'

**Monochrome
photos don't do
justice to any
of the
paintings, but
especially this
one of the
poppies at the
Tower of
London by
Wendy Fraser**





TEMPLE EWELL VILLAGE HALL

for all your functions

To hire the hall
call John Holness
on 01304 448140

N. J. Creed

Plumbing & Heating Engineer

10 Chance Meadow
Guston, Dover, CT15 5EP

Tel: 01304 205679 Mobile: 07855771095

Gas servicing - Boiler Maintenance - Plumbing - Central Heating Installations - LPG



Reg. 203876

The Mangle Laundrette

21 Worthington Street, Dover Kent CT17 9AU

www.doverlaundrette.co.uk

For all your washing needs

All large items including duvets, blankets etc.

Ironing

PICK UP & DELIVERY SERVICE

(Normally same day)

APPOINTED AGENTS FOR JILLY'S DRY CLEANING

Call now on

01304 241235

07855385618

HYTHE BAY SEAFOOD RESTAURANT & BAR AT HYTHE & DOVER

*Straight from the Sea
Right by the Sea*

Enjoy stunning daytime views across the Channel as you dine on the finest and freshest fish and seafood in the south east in a totally relaxed and friendly atmosphere.

LIVE MUSIC

HYTHE: Every Saturday evening
DOVER: Every Saturday evening
& Sunday lunch time

- Open 7 days a week
- Morning Coffee from 10.00 a.m.
- Full restaurant service from 12 noon until 10.00 p.m.
- Fully Licensed Bar
- All Fresco dining
- Non Fish & Vegetarian options and Children's Menu available



To make your reservation please call
HYTHE: 01303 233844 or email: hythe@hythebay.co.uk
Marine Parade, Hythe, CT21 6AW www.hythebay.co.uk
DOVER: 01304 207740 or email: dover@hythebay.co.uk
The Esplanade, Dover, Kent CT17 9FS www.hythebay.co.uk

S B Landscapes & Son

Well established local family run business that covers all aspects of landscaping, including fencing, decking, patios, walls, drives, turfing, artificial grass, fish ponds, water features and tree felling.

**Work guaranteed, fully insured
Call for a free friendly quote:**

**01304 332199 / 07792 501727
or visit
www.sblandscapes.co.uk**



KEVIN

**Plastering & Building Services
Painting & Decorating
Wall & Floor Tiling**

**All aspects of Building Work undertaken
07948 045255**

Free Estimates - Temple Ewell Resident



ACB Maintenance and Design Solutions

Andrew Boulter
Mob: 07711080207
Tel: 01304 332112
aboulter24@yahoo.com

Painting & decorating
Kitchen fitting
Bathroom fitting
General property maintenance
Carpentry
Tiling

All work carried out to a high standard
No job too small

Proud members of
Checkatrade.com
Where reputation matters





Temple Ewell Baptist Church

(Part of the Baptist Family in Dover)



One year ago this church started its own Messy Church. The name does not sound very inviting. Church suggests a formal ritual and Messy is chaotic, dirty and irreverent. Its title does not appear do it any favours.

So what title would describe a group of people meeting together to have a fun time? Of all age groups; doing various craft activities; having an excellent cooked meal without having to pay; and a time to reflect about one of the Bible Stories.

The February Messy Church will be about reclaiming wasted years (the story of the prodigal son whose Father still loved him).

It is not intended to be a conventional church service and if you are interested then please come along. If you wish to just watch, that is fine, there is no pressure.

Messy Church is held on the second Sunday of each month from 4.00 - 6.00 pm.

Our activities continue as usual:

Sunday Family Service: 10.30am

Monday Keep Fit: 7.30pm

Wednesday Bible Study and Prayer: 7.30pm

Future Events

MESSY CHURCH on Sunday 8th February. 4.00 - 6.00pm. This is for children and adults and comprises about 1 hour of craft activities, 10 minute Bible based talk, a full cooked meal. Please come.

LENT LUNCHES start on 25th February 12-00 - 1-30pm

We are here to serve you and if there is anything you wish to ask do not hesitate to contact Pat on 827341, Jack on 825150 or our minister Ewart Graham on 375823.

www.temple-ewell-baptist.co.uk



Temple Ewell Youth Club

Wine and wisdom

Friday Feb 20th 7 for 7:30

in the Village Hall

£5 per person - Ploughman's Supper included

Bring your own drinks



Lesley Morgan TCFCPa

Mobile Foot Care Practitioner

Toe nail cutting, corns, hard skin removal, general foot care, lower leg and oot massage, diabetics and those on blood thinning medication welcome.

Gel toe nails, many colours. Full body massage also available with relaxing oil.

07939123143

Registered, fully qualified & insured

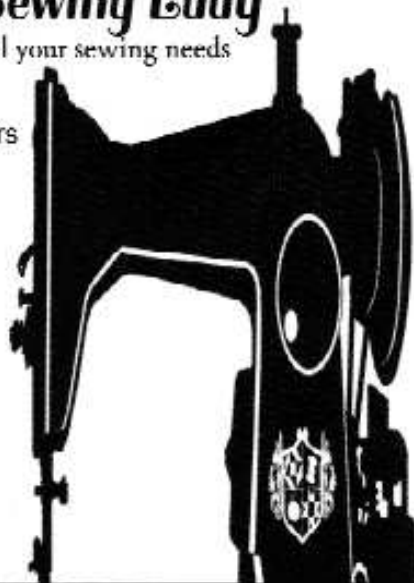
Sew Essential

The Sewing Lady
For all your sewing needs

Alterations & Repairs

Curtains and
soft furnishings

**EXPRESS
SERVICE**



sew.essential1@yahoo.co.uk

07716304816



PLASTERING

**Professional, clean,
reliable service**

Fully Insured

Lewis Winterbottom

07587 144821

01304 822892

lswplastering@yahoo.co.uk

(Temple Ewell Resident)



Remember Them

(Proprietor: Mrs Anne Cox)

*Independent Provider of
Bespoke Orders of Service / Attendance Cards
for the Funeral of your Loved One. (Home visits)*

01304 823456 / rememberthem2011@gmail.com

YOUR LOCAL INDEPENDENT FAMILY OWNED FUNERAL SERVICE

SULLIVAN & SON

- * Recommended by the Good Funeral Guide
- * Recommended by the Natural Death Centre
- * Funeral Contractor to Dover District Council

Instant estimate available here:

www.sullivanandson.co.uk

24 HOUR PERSONAL SERVICE:-

01304 201322

12 Beaconsfield Road, Dover, CT162LL



**Golden Leaves
Funeral Plans**

CLEVERLEY & SPENCER

**Monumental Masons
Est 1869**

Member of
NAMM, NAMLC, SAIF(ass)
BRAMM and RQMF registered

**CONTACT US FOR
FRIENDLY, HELPFUL ADVICE**

All types of memorials supplied
and cleaned throughout Kent,
East Sussex and London

CONTACT:
5 Frith Road, Dover
01304 206379
www.clevspen.co.uk

LET OUR FAMILY HELP YOUR FAMILY



**Home Visits
Private Chapel of Rest
24 Hour Personal Service
Pre-payment Plans**

W. J. FARRIER & SON LTD

Family Funeral Directors Established 1948

161 London Road, Dover. 01304 201665
37 Bouverie Road West, Folkestone 01303 245500

B HOLMAN

CARPENTRY & PROPERTY MAINTENANCE SERVICES
LOCAL CARPENTER WITH 30 YEARS EXPERIENCE

Telephone: 01304 820969

Mobile: 07783 720349

- Kitchens
- Doors/Windows, Wood & PVC
- Laminate & Real Wood Floors
- 1st & 2nd fix
- Fascias/Soffits/Guttering
- Fencing & Decking
- Also: Plastering, Painting & Decorating

Reliable Tradesman

ROGER O'NEILL

Approved Firestone Fitter



RubberCover™

Rubber material for all types of flat roof
including garden sheds. Lightweight & flexible.

Minimal or no maintenance.

20 year material warranty.

*Qualified Carpenter &
General Property
Maintenance work also
undertaken*

Home: 01304 830465 Mobile: 07785 987614

ABBEY FARM HOLIDAYS

Beautifully converted self catering barns, ideal for visiting family & friends.
Comfortably and extremely well equipped with wood burners, wi-fi and dogs are
welcome too. Accommodating up to 10 people and only 1 mile from River.

For more information contact Sue Moynan

ST RADIGUNDS ABBEY FARM DOVER CT15 7DL

Tel 01304 825963

email sue@abbeyfarmholidays.co.uk

www.abbeyfarmholidays.co.uk



COLLINS

RESIDENTIAL

Telephone Extensions

Ex BT Engineer, 10yrs Experience

Broadband INTL line check

Telephone Extensions

Fault Finding

Damaged/Untidy Cables

Internet Extensions, etc.

Payphone Rentals

Reasonable Rates

Ring Peter on 01304 823589

Mobile: 07941 038343



KCC and DDC Councillor

Do you hear about people who have not claimed thousands of pounds on their premium bonds prizes or have not claimed their pension, or appear to have abandoned monies in a bank account they opened years before? How can people do this? Can you really forget you have money?

Surely no-one can have so much going on in their life that they could effectively abandon their hard earned money. That is what I thought until this week, when it happened to me. I had received a letter from my bank stating that the cash card issued to me in January 2010 is due to expire in January 2015. However, they stated over the last five years as I had not carried out any transaction they would not be renewing the card, unless I carried out a transaction before the end of January, then they would re-issue a new card. My dilemma was, I did not recall an account with such a cash card, there had been no bank statements issued over those five years under the card number, I had no idea where the card was 'filed' or the PIN.

I promptly took some identification and the bank letter with me to the bank, in order to obtain further information. I was informed the reason for no bank statement was due to the account being reflected in a passbook.

Following around twenty minutes of enquiries at the bank it all started to fall into place. Just before the financial crash in 2008, this bank had convinced me to amalgamate a couple of bank accounts that were not earning any interest rates into a single account, that offered a good rate at the time, with conditions of so much money to be paid in each month. Effectively a combined operating and savings account. I was told they would not include the account with the passbook, as the interest on that account, then, was reasonable.

Consequently, due to operating the new combined account over the next seven years or so, I simply forgot about the passbook account. An evening of going through my files successfully located my passbook, cash card and PIN. finally I had recovered the situation.

So, have a thought, could this or has this unknowingly happened to you? Have you changed employment and assumed your old pension has followed you to the new job? Have you moved house and not notified the Premium Bonds office, or claimed an energy or BT landline apportioned refund?

Not sure? Here are some phone numbers to help you, in case you have a niggling doubt.

Premium Bond unclaimed prizes. Call 0500 007 007.

Investments. Check Companies House (gov.uk/government/organisations/companies-house)

Pensions

The Dept for Work & Pensions has a free pension tracing service. Phone 0845 600 2537. However for personal pension enquiries you need to contact the pension provider.

Inheritances

Visit gov.uk/government/organisation/bona-vacantia for information

Energy refunds (when you have moved address).

Visit either myenergycredit.com or telephone 0370 737 7770

It may take just five minutes to check, but could result in a pleasant surprise.

Have a peaceful, healthy 2015.

Cllr Geoffrey Lymer

Dover District & Kent County Councillor



Pancake Day

**Tuesday 17th February at 10.30am
in Temple Ewell Village Hall**

Pancake Tossing Races and Eating!



Coffee and Teas served

All ingredients provided



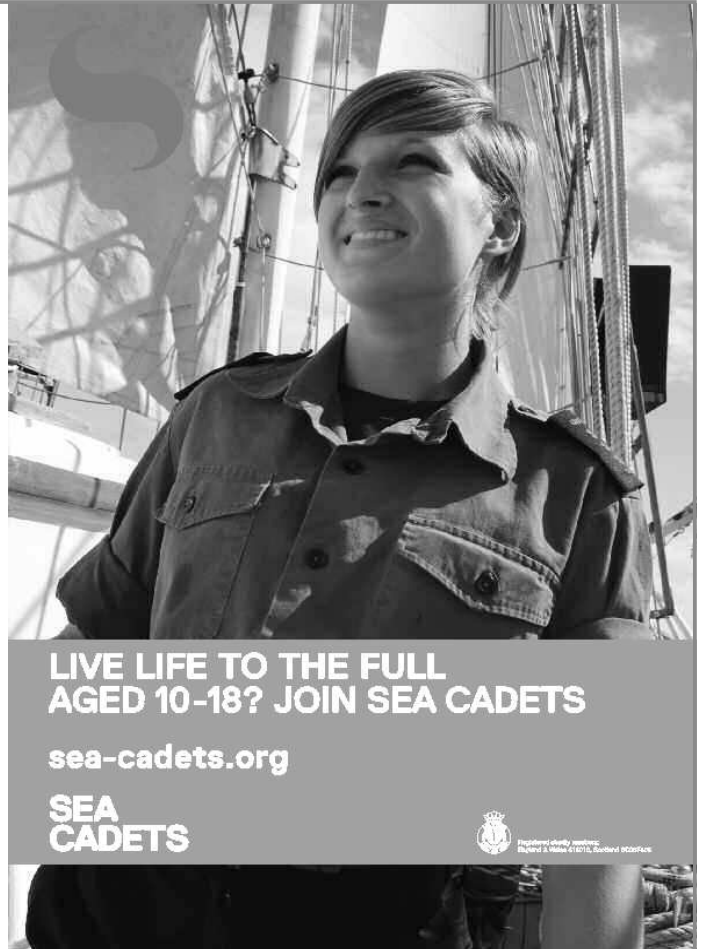
Dover & Deal Sea Cadets

Dover & Deal Sea Cadets meet at their headquarters, TS LYNX, in Upper Road, Dover (behind the castle) Monday and Thursday evenings from 6.45 - 9pm.

If you are a girl or boy aged over 10 (or a parent / carer) and would like to find out more about what we do, call in any Monday or Thursday evening or ring us on 01304 219810.

Feel Good Factor - Join Sea Cadets for the time of your life.

www.sea-cadets.org/



Dover Letting Agency

John Birchenough & Chris Coleman possess over 45 years combined experience in the letting industry and look forward to welcoming new & old customers alike.

- Tenant Find Only
- Fully Managed
- Reduced Commission on Property Transfers
 - Guaranteed Rents & Legal Protection
- FREE Client Money Protection Insurance

01304 268101 - www.doverlettingagency.co.uk

info@doverlettingagency.co.uk



2 Cherry Tree Avenue Dover Kent CT16 2NL



A.B. LANDSCAPES

DESIGN & CONSTRUCTION SERVICE

PRIVATE & COMMERCIAL
DRIVEWAYS - FENCING - DECKING
TURFING - PATIOS - BLOCK PAVING

Contact Andy Broadley

Tel: 01304 827779

Mobile: 07779091427

1 Target Firs, Temple Ewell, Dover

SPECIALISTS IN HORSE MENAGES

10%
Discount

Computer and Laptop Repairs

Local, affordable -

computer repairs you can trust, No Fix, No Fee. We come to you at no extra charge, free collection and delivery. Call us NOW for same day callout!

- ♦ Virus Removal
- ♦ Screen Repairs/ Replaced
- ♦ DC Jacks Repairs/ Replaced
- ♦ Used Laptops Always Available
- ♦ Data Recovery
- ♦ Tune Ups
- ♦ Upgrades



Dover, Deal, Canterbury, Folkestone, Hythe

Quick Fix PC Repairs

Tel: 07768 547337

www.quickfixpcrepairs.co.uk



C D WOODWARD A.I.P.

PLUMBING & HEATING ENGINEER

Repairs, Maintenance, Installation & Gas Servicing



100 Canterbury Road, Lydden, Dover, Kent. CT15 7ET



Home/fax: 01304 831345

Mobile: 07850 579303



TOTS 2 TEENS

PLAYSCHOOL AND HOLIDAY CLUB

OFSTED INSPECTED - Greendale, Lydden Primary School, Stonehall, Lydden CT15 7LA

Web: tots2teenslydden.co.uk

email: office@tots2teenslydden.co.uk

Playschool:- Ages 2 -5, even in nappies!

(A few places are available for children from 6 weeks)

After School/Holiday Club:- Ages 5 - 11

OPEN:- Monday to Friday

8.00 am to 6.00 pm

COMPETITIVE RATES

(Nursery Vouchers Accepted)



Reg Charity No 1001591

Many Activities Inside and Outside - Trained Staff

For more information telephone:-

DOVER (01304) 826511

And ask to speak to Debbie



Temple Ewell Parish Council

New Play Equipment 2015 –
Launch date End of Feb/Early March 2015

The Parish Council is delighted to report that after months of applying for grant funding they have raised £23,000 to purchase fantastic new play equipment for the King George V playing field. £18,000 has come from external sources and £5,000 from the Parish Council. The old climbing frame will be replaced with two circular picnic benches for families to enjoy. A triple multi activity tower unit and basket swing will be installed on the playing field.

Temple Ewell Parish Council understands that playgrounds are vital for a child's physical and social development, plus they provide social benefits for children from different races and economic levels who would otherwise not have the opportunity to play together. Play is also an invaluable part of family and community life. As a result of replacing the old play equipment, the Parish Council has ensured that the new facilities will cater to a wider age range from 3 –14 years, to enrich the lives of children and young people in our community.

The basket swings have become a 'must have' in most play areas. Popular with children of all ages and abilities, it is both exhilarating and safe - the wide basket also enables parents and carers to join in if they wish. The basket swing can be used in different ways, as a gentle rocking sensation with children lying in the basket or as a dynamic swing ride for a group of children.

We hope that parishioners will celebrate and enjoy the exciting new play equipment and welcomed improvements to the King George V playing field.



Proposed new multi-activity tower and picnic tables



Job Vacancy Notice

Position: Village Handyman 5 hours per week £7.15 per hour.

Location: Temple Ewell Village

Reports To: Temple Ewell Parish Council

Key Responsibilities:

Gardening & Maintenance of the Public Spaces in the Centre of the Village, to include Litter Clearance, General Cleaning, Meter Reading, Maintaining Play Equipment and General Maintenance Reporting to the Parish Council

Interested applicants should contact the Clerk
for a copy of the full job description:

Clerk: Mrs J Coulson-Wright

5 Dour Side, River, Dover, CT17 0UX

Tel: 01304 820273 Email: coulsonwright@aol.com

Closing date: Friday 27th February 2015

The full Parish Council meets on the last Tuesday of the month (excluding August & December) at 7.15pm at the Temple Ewell Baptist Church Hall on the corner of the High Street and London Road.

Parishioners are most welcome to attend and contribute to meetings. The agenda and minutes are displayed on the Parish Council notice board by Southdown Stores and on the Council website.

Contact details for councillors are on the website:

www.templeewellpc.kentparishes.gov.co.uk

Email the Clerk at: coulsonwright@aol.com

MARK WALTON

Cranbrook, Dover Road, Guston
Tel: 01304 219886
Mobile: 07970 745272

BRICKWORK CONTRACTOR & BUILDER

Re-pointing **New buildings**
Driveways **Block-paving**

Alterations **Extensions**
Conservatories **Patios**

Brabourne Gardening Services

**Lawns mown • Edged •
Dressed • Scarified
Hedges cut • Trees pruned •
Shrubs tidied
Fencing and Patios**

**Weekly or Fortnightly Visits
One off clearances
Small removals undertaken**

**Call Dennis Brown
Tel: 01304 829712
For Free no obligation estimate**



ATTENTION LANDLORDS & PROPERTY OWNERS

Looking to rent out your property in the village?

We are always in need of good quality properties for
our professional clients in the local area. We fully
reference all applicants.

Thinking of buying a property as an investment?
Free advice given.

For further information contact:
Karen Southon at

Kearsney Property Services

Relocation | Property Management | Lettings and
Investment



Tel: 01304 825153

Email: office@kearsneypropertyservices.co.uk



RHS qualified

- ♦ **Garden Design**
- ♦ **Border maintenance**
- ♦ **Specialist lawn care**
- ♦ **Pruning and
hedge trimming**
- ♦ **Tree care**

**For a free estimate call
Rob or Debbie Philpott
01304 820371
07545 127604**

BAY GAS SERVICES

Gas Heating Engineers

Ex-British Gas - 30 yrs experience

Boilers, Gas Appliances and Plumbing

Full Installation, Servicing, Repairs

01304 852 852 (direct to mobile)



LYDDEN LIFTS

Stairlift Enquiries:-

Mr J.V. Glass

Tel: 01304 825534

Mob: 07845 299408

Email: lyddenlifts@hotmail.co.uk

Hillview, 70 Canterbury Rd, Lydden, Dover, Kent. CT15 7ES

Get the fitness bug



and start your
TRANSFORMATION

1 FREE
CLASS!

Hourglass Fitness Club, Ladywell, Dover
Tel: 01304212444, Email: info@hourglassfitnessclub.co.uk

Facebook: Hourglass Fitness Club

Web: www.hourglassfitnessclub.co.uk

Get in touch with us today for your FREE CLASS and timetable!





Produce Association

We would like to wish all our members and friends a very Happy New Year.

Our first meeting of the new year will be the Coffee Morning on Saturday the 7th of February 10am -12 noon in the village hall. Please come along and meet the committee and your friends for a chat over a tea or coffee - all free!

If you haven't joined the club yet you can do so on the day. Schedules for the year will be available.

We hope to be having a coach trip again this year, all being well.

Hope to see you all at the Coffee Morning.

Trevor Barlow and the Committee

Conservation Tasks



If you would like to help conserve our threatened habitats and the wildlife that they support, we have tasks throughout the year on Sundays and Tuesdays. A list of these is on the Temple Ewell Parish Notice Board.



Skylark



Kestrel

The Task Days for February are Tuesday 10th and Sunday 15th.

For more information contact Peter on 07889 274536 or Bob on 01304 827138.



Breathe Easy Dover is our local British Lung Foundation support group for anyone living with a chronic lung condition, including family, carers and friends. It is run by volunteers and funded by donations and fund raising events.

We meet every second (2nd) Thursday of each month (12 meetings annually) from 2 – 4 pm at Whitfield Village Hall, Manley Close, off Sandwich Road, Whitfield CT16 3LY. Our next two meetings are on 12th February and 12th March. There will be guest speakers to inform us about various health and social care aspects of living with a chronic lung condition. The meetings are free to attend and everyone will be greeted with a warm welcome and refreshments.

For more information please contact Lizzi Stephens on 07981 892755

DOVER SINGING FOR BREATHING GROUP

Did you know that singing is good for you?

The Dover Singing for Breathing group meet weekly (with the exception of August) on Fridays for FUN singing sessions between 12.45 and 2.15 pm at Whitfield Village Hall, Manley Close, off Sandwich Road, Whitfield CT16 3LY.

This is aimed at people living with a chronic lung condition, as singing is good for your lung health. However, the sessions are open to anyone of any ability with or without a lung condition. We ask for a contribution of £2 per session; it is not necessary to attend every week.

If you want to find more about us we'd be pleased to see you any Friday; the first session is free.



For more information please contact Lizzi Stephens on 07981 892755

Kearsney Manor Nursing Home

ALKHAM VALLEY ROAD
KEARSNEY DOVER CT16 3EQ

Tel: 01304 822 135

www.kearsneymanor.co.uk

Matron - Mrs K. Wilczek

Owned by the Sisters of the Christian Retreat

We aim to provide a high standard of care for the elderly and
convalescent patients

State Registered Nurses on duty at all times.

www.
millviewbuilders
.co.uk

**Household Maintenance,
Home Improvements
& General Building Work**

- Registered Velux installer
- Registered Firestone installer
- Conservation & listed building

Mob: 07966 003351

Tel: 01304 332949

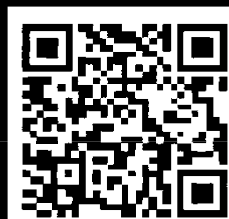
info@millviewbuilders.co.uk



find us on
facebook



VELUX®



Kearsney Abbey Tearoom

Alkham Road, Temple Ewell

Tel: 01304 829046

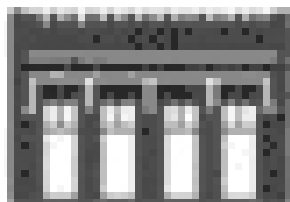
Open all year round for:-

All day Breakfast

Home Cooked

Lunches

Afternoon Teas



Award winning
Solley's Ice Cream
on sale too!



Electrical Contractor

All aspects of electrical work carried out.

Domestic and commercial

Rewires, new builds, earthing upgrades

Additional sockets,
replacement fuse boards

Free estimates
(out of hours if required)

Emergency call outs

Call Mark on 07711690172 or 01304 841657

www.bridgemarkservices.co.uk



Fully Insured

Part P registered

Over 20 years experience

KINGS Fencing & Garden Maintenance

Phone for a FREE Quotation

0771 999 88 54



Lornas Barber

closed mondays

open all day tues,thur, fri

wed 9am-12pm sat 8.30am-3pm

phone 07776116865

2 high street, temple ewell ct16 3du

BEFORE THE INK RUNS OUT



Time to compose some
more poems
So the Editor said
I'll need them by the 15th
January
To choose which one and
put the issue to bed.

Your next submission will be February 2015
One or two will be fine
'Cos the Editor is very understanding and flexible
- she really doesn't mind!

Whether it be irregular verse
or each line ends with a rhyme.
Whether I write about romance or life
whether its about me and mine.

Instead of dithering about what to write
I could have written something by now.
About what, or whom, or whatever
rather than – how?!!

Anne Cox



Letters to the Editor

We would like to hear from you. What do you want information on? Need help with something? Want to comment on a local issue? This is the place to do it! Send to the Editor - details on page 3

Dear Readers

Does anyone have a Scrabble set or Junior Scrabble set that they no longer use and would kindly donate to the village School's new Scrabble Club, please?

This is to help our students with their literacy and sportsmanship! We currently only have one set of each.

Any spare dictionaries would also be appreciated to help us avoid dodgy spellings!!

Please contact me on 07773 381916 if you can help.

Kirsty Price

Note from the Editor

I was pleased to include information about the Support Group at Whitfield for people with chronic lung conditions in this month's Newsletter - page 33 - and for their singing group.

Although this is not in Temple Ewell it could be of benefit to some of our residents. If you have details of any other groups such as this, in the local area, that may be of interest to our readers, please let me know and I will be happy to include details next month.

Jeanette

**Would you like to advertise your business
with us, reaching
over 700 households x 10 issues a year?**

Limited space is now available

Newsletter and website (full year) :

¼ page	£60.00
½ page	£115.00
Full page	£225.00

One offs :

¼ page	£10
½ page	£20
Full page	£40

Email: tenews@uwclub.net Tel: 01304 826386



A brief history

In 2010 the Department of the health funded a research project that investigated whether regular social singing could have a positive impact on the health and well-being of people over 50.

Over 250 people, most of whom had never sung before, took part in the project, singing in one of five singing groups.

At the end of the project over 100 of the participants wished to continue singing and Living Lively was set up to allow this to continue.

Our first four singing groups opened in January 2011 and in our first year we opened a further 4 groups. .

During 2012 we opened a number of new groups and now have 14 groups meeting each week including our first group in Hampshire. Subject to funding we will be running a number of pilots in new areas during 2014.

Living Lively is a Registered Charity. Although we pay the people who lead our groups, most of the other work involved in running the charity is done on a voluntary basis including administration, fundraising and finance. Our work is overseen by an independent board of Trustees with decades of experience in the charitable and not-for-profit sector.

Your local Group is called 'River Voices' and we meet on Thursday afternoons 2 - 3.30pm in River Methodist Church. Please do come along and try out our group. You may feel nervous about trying something new or something that you have not done for many years, but we are friendly and approachable and you would be made to feel very welcome. Your first 'taster' week is free and then it's £50 per term.

We always have a really good time - we all go home with a smile on our faces.

For further information - Tel: 01233 750585 E-mail: info@livinglively.org.uk or just come along on a Thursday (during term times).



A local business catering for all your household electrical requirements including;

- ✓ Circuit repairs & Re-wires
- ✓ Fuse Board Replacements
- ✓ Outside Power & Lighting
- ✓ Fire & Security Alarms

Work fully guaranteed with additional protection provided to Homeowners under the NICEIC's warranty scheme for extra peace of mind.

Call us today to arrange a free estimate and pre-work survey.

Tel: 01304 823028 / 07984 453326

info@mwlelectrical.co.uk

Quality Service

Quality Workmanship

Quality Aftercare



KITCHEN DESIGN AND INSTALLATION

Working with you to create a space that compliments your home, lifestyle and budget.

Quality and flexibility are central to our approach and we provide a number of options and benefits;

- ✓ Installation Only or Full Design, Supply & Installation Service
- ✓ Comprehensive Service Including Electrics, Plumbing & Appliance Installation
- ✓ Optional Decoration & Tiling Service
- ✓ Outstanding Value For Money

Call us today to arrange a free, no obligation survey and quotation.

Tel: 01304 823028 / 07984 453326

info@mwlelectrical.co.uk

Quality Service

Quality Workmanship

Quality Aftercare

Useful Telephone Numbers

Lydden Surgery	832160
NHS Out of hours medical service	111
Dover Health Centre	865500
Buckland Hospital	201624
Canterbury Hospital	01227 766877
William Harvey Hospital	01233 633331
Queen Elizabeth the Queen Mother Hospital	01843 225544
Dover District Council	821199
KCC Highways to report faults with roads/streetlights etc	08458 247800
Citizens Advice Bureau	0844 8487 978
Dover Library	204241
Dover Leisure Centre	201145
Stagecoach Dover	08456 00 22 99
Tourist Information	205108
Late Night Chemist Tesco Whitfield (open till 8pm)	867547
PCSO May	07772 226209
Dover Community Safety Unit	872220
Police Fire Ambulance - Emergencies	999
Police - to report a suspicious event	101
Police - to report a crime where the offenders have left	101
Social Services	0845 8247 100
Crimestoppers	0800 555111
Gas Emergency	0800 111999
Electricity Emergency and Power Failure	0800 783 8866
Water Supply Emergency	0845 888 5 888
Waste Water Emergency	0845 278 0845
Childline	0800 1111
The Samaritans	0845 7909090
Post Office Customer Services	0845 7740 740

The Temple Ewell Newsletter is published monthly in the interest of greater unity within the community. It is distributed free of charge. Editorially it aims to be free from political, sectarian and institutional bias and seeking neither to be divisive nor controversial, it does not support or oppose any cause.

The appearance of an advertisement in this Newsletter does not mean that we endorse the advertiser's goods or services. While we will not knowingly run an advert that is untrue, The Newsletter is not responsible for the accuracy of any advertising material or the usefulness of an advertised product or service.